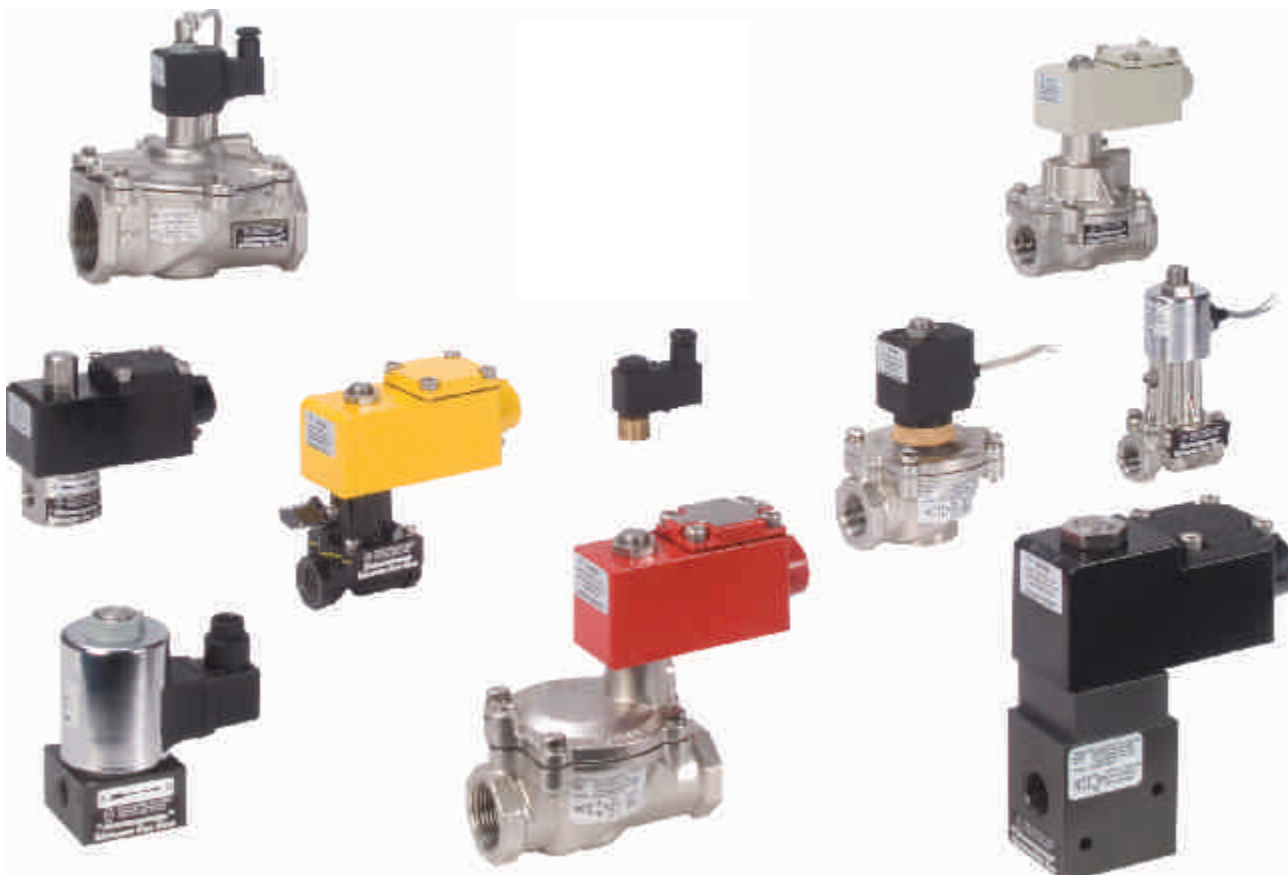


**2 PORT VALVE**



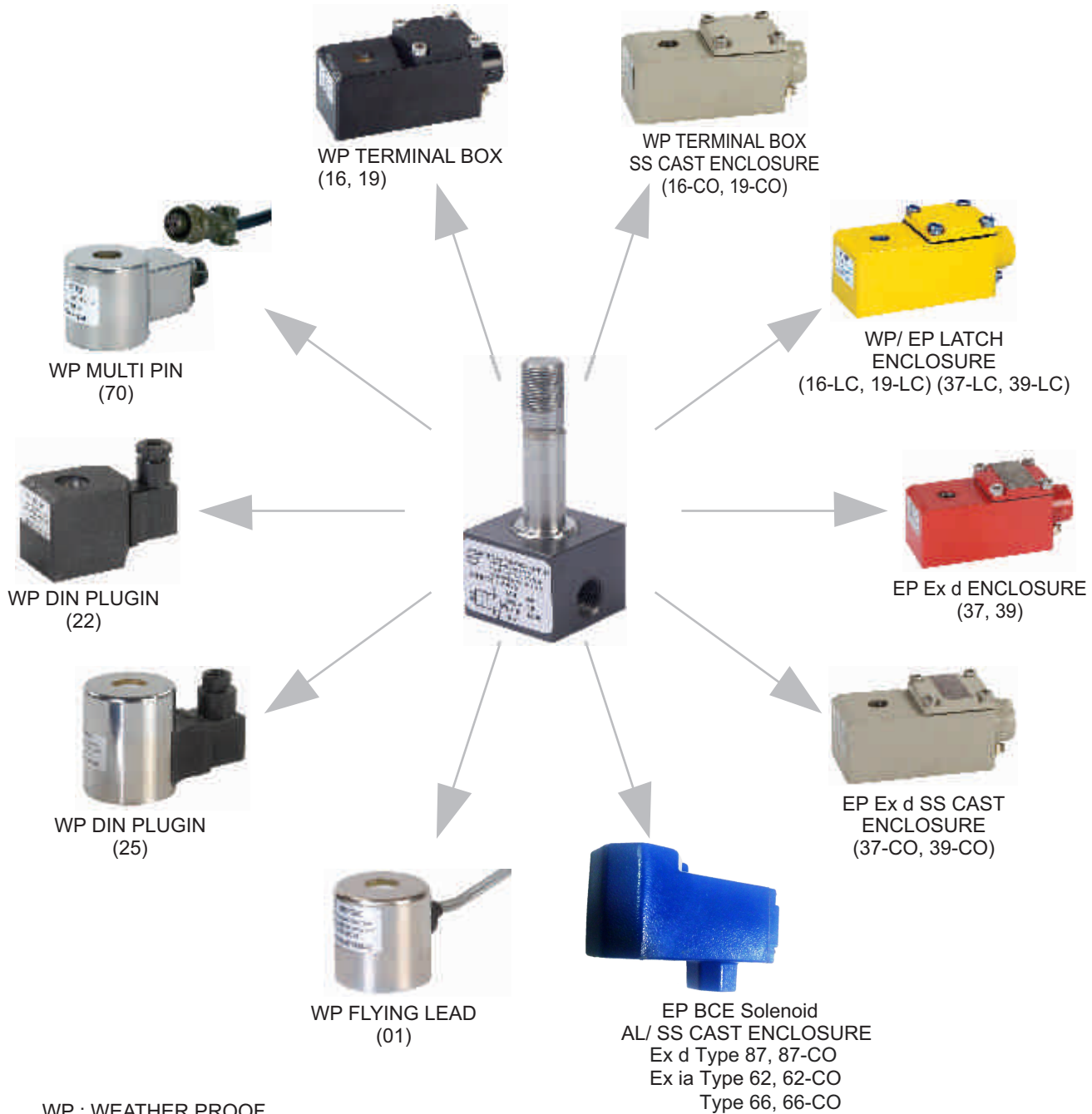
6

TYPE	ORIFICE	PRESSURE	PAGE	ORIFICE	PRESSURE	PAGE
	mm	bar	NO.	mm	bar	NO.
	NORMALLY CLOSED VALVE			NORMALLY OPEN VALVE		
Direct Acting	0.8 - 12	0 - 100	73	0 - 5	0 - 63	79
Direct Acting General Purpose	1.5 - 2.5	0 - 14	77			
Direct Acting (All Ports in Body)	1.2 - 3	0 - 20	83	1.2 - 3	0 - 20	83
Diaphragm Actuated	12 To 50	0.2 - 20	85	12 To 50	0.2 - 21	85
Direct Acting High Orifice	12 To 50	0 - 10	91			
Diaphragm Actuated (General Purpose)	12 To 50	0.2 - 20	93			
Diaphragm Actuated (L Ports)	12 To 50	0.2 - 20	95			
Poppet Actuated	12 To 50	0.5 - 40	97	12 To 50	0.5 - 40	97
Isolated Piston	12 To 50	0 - 20	101	12 To 50	0 - 20	101
Isolated Piston Bi Directional	12 To 50	0 - 10	103	12 To 50	0 - 10	103
Air Operated Air Fail To Open				12 To 50	0 - 40	105
Isolated Piston Air Operated	12 To 50	0 - 40	107	12 To 50	0 - 40	107
Direct Acting High Pressure	1.2 To 1.4	0 - 400	109			
Poppet Actuated High Pressure	12 To 50	4 - 70	111	12 To 50	4 - 70	111
Poppet Actuated High Pressure	12 To 25	5 - 400	113			

**2/2 SOLENOID VALVE**

**SOLENOID INTERCHANGEABILITY**

6



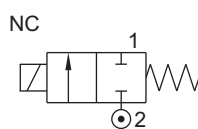
WP : WEATHER PROOF  
EP : EXPLOSION PROOF

ROTEX TWO PORT VALVE PROVIDES INTERCHANGEABILITY FOR VARIOUS SOLENOID ENCLOSURES, VOLTAGE AND CURRENT WITHOUT AFFECTING ITS PERFORMANCE.

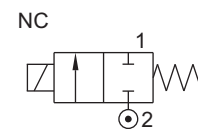
## 2/2 DIRECT ACTING NORMALLY CLOSED SOLENOID VALVE

TYPE	PRESSURE

TYPE	PRESSURE
20124	0 - 0.3 bar
20126V01	0 - 225 bar
3352V01	0 - 100 bar



TYPE	PRESSURE
20101	0-150 bar
20126	0-63 bar



### FEATURES

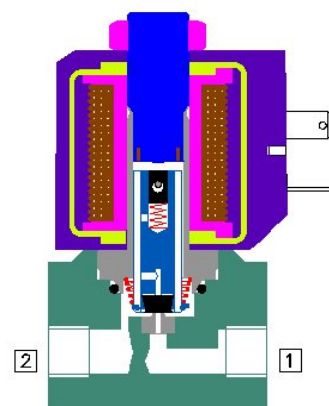
- Bubble tight shut off
- Suitable for vacuum up to 10<sup>-6</sup> torr
- Vibration resistance up to 9g
- Mounts in any position
- Suitable for high speed cycling up to 1000 cycles/ min.
- Manual override optionally provided



### WETTED PARTS

Code	※	B2	B5
Body	Anodized Aluminium	Brass	SS 316
Internals	Aluminium	Brass	SS 316
Guide Assembly	SS 304		
Shadow-Ring	Copper/ Silver/ None		
Plunger, Insert	SS 430		
Spring	SS 302		
Seat, Seals	NBR, Viton, EPDM, PTFE		

※ Do not specify code if opted for. Refer Page # 22 for Value of ※



### AMBIENT AND FLUID TEMPERATURE

-30 °C to 75 °C

### SPECIAL VERSION AND SUFFIX

Suffix : (Valve) OX, AM  
Special version : (Solenoid) CO, FR, SS, LC, III, TM

### MEDIA

Air, Inert Gases, Water, Vacuum, Free Flowing Liquid, Oil, Diesel, Kerosene, LPG

### APPLICATION

Dispensing, Analyzer, Drain

### PORT CONNECTION

INLET	OUTLET
2	1

Contact Rotex for

- Any other ambient, fluid temperature, media and application
- UL listed, Listed general purpose Valve

### SPARES

(Refer page 25 for ordering code)

SPARE KIT	CODE
Seal Kit : Oring Set and Plunger Assembly	98
Repair Kit : Oring Set, Plunger Assembly, Springs, Manual Override, Guide assembly	99
Solenoid Kit : Solenoid, Gasket	34

### APPROVAL

(※ applied for)

Approval	Nema 4X	IP67	Ex d IIC T4 or T5 or T6 IP66	Ex ia IIC T6 IP67	DGMS	CCOE
		✓	✓	✓	✓	✓
CE		✓	✓	✓		
UL	✓		*			
			✓	✓		
ERC			✓	✓		
			✓	✓		



20123 Model is discontinued Offer Alternate Model 20172V02LP  
Contact Rotex if must to Offer Specific Model  
OIL Media Temperature Restricted from 0 °C to 100 °C



## 1/2 DIRECT ACTING NORMALLY CLOSED SOLENOID VALVE

### SPECIFICATION

PORT CONNECTION			PRE-SURE bar		VALVE TYPE	PILOT PRESSURE	BODY MATERIAL AND INTERNALS						SEALS					MANUAL OVERRIDE		SOLENOID ENCLOSURE				SUFFIX		POWER VA		CONSTRUCTION REFERENCE NUMBER		
SIZE	BSP(F)	NPT(F)	MINIMUM	MAXIMUM			NW ORIFICE (mm)	FLOW FACTOR KV (LPM OF WATER @ 1 bar ΔP)	ALUMINIUM	ALUMINIUM + SS	BRASS (STD. PORT NPT)	SS316 (STD. PORT NPT)	NBR	Viton	EPDM	PU	PTFE	NIL	STAYPUT CUM MOMENTARY	MOMENTARY	FLYING LEAD	PLUG IN, IP67	SQ. PLUG IN, IP67	TERMINAL BOX IP67	EXPLOSION PROOF IIC, IP67	LARGE ENCLOSURE	SOLENOID SIZE		OXYGEN	AMONIA

#### 1/2 NORMALLY CLOSED

1/2"	3/8"	1/4"	1/8"	SIZE	PORT CONNECTION	PRE-SURE bar	NW ORIFICE (mm)	FLOW FACTOR KV (LPM OF WATER @ 1 bar ΔP)	VALVE TYPE	PILOT PRESSURE	ALUMINIUM	ALUMINIUM + SS	BRASS (STD. PORT NPT)	SS316 (STD. PORT NPT)	NBR	Viton	EPDM	PU	PTFE	NIL	STAYPUT CUM MOMENTARY	MOMENTARY	FLYING LEAD	PLUG IN, IP67	SQ. PLUG IN, IP67	TERMINAL BOX IP67	EXPLOSION PROOF IIC, IP67	LARGE ENCLOSURE	SOLENOID SIZE	OXYGEN	AMONIA	AC INRUSH	AC HOLDING	DC	CONSTRUCTION REFERENCE NUMBER		
1/2"	3/8"	1/4"	1/8"	4G	4R	0 1.5 12 50	20124		*		B5	*	S2	S1						*			F	25	T	E	18	✓	✓	13	13	13					
				1/2"	4G	4R	0 2.5 5 8	20101		*	B2 B5	*	S2	S1	S8	*				*			F	22	25	T	E	III	14	✓	✓	18	12	8	A		
				1/2"	4G	4R	0 4 4 7	20101		*	B2 B5	*	S2	S1	S8	*	M6	M8	F	22	25	T	E	III	14	✓	✓	18	12	8	A						
				1/2"	4G	4R	0 6 3.5 5	20101		*	B2 B5	*	S2	S1	S8	*	M6	M8	F	22	25	T	E	III	14	✓	✓	18	12	8	A						
				1/2"	4G	4R	0 6 5 8	20126		*	B2 B5	*	S2	S1	S8	*	M6	M8	F	25	T	E	III	14	✓	✓	13	13	13	C							
				1/2"	4G	4R	0 8 3 4	20101		*	B2 B5	*	S2	S1	S8	*	M6	M8	F	22	25	T	E	III	14	✓	✓	18	12	8	A						
				1/2"	4G	4R	0 10 4 7	20126		*	B2 B5	*	S2	S1	S8	*	M6	M8	F	25	T	E	III	14	✓	✓	13	13	13	C							
				3/8"	3G	3R	0 12 2.5 3.5	20101		*	B2 B5	*	S2	S1	S8	*	M6	M8	F	22	25	T	E	III	14	✓	✓	18	12	8	A						
				3/8"	3G	3R	0 15 2.2 2.5	20101		*	B2 B5	*	S2	S1	S8	*	M6	M8	F	22	25	T	E	III	14	✓	✓	18	12	8	A						
				3/8"	3G	3R	0 15 3.5 5	20126		*	B2 B5	*	S2	S1	S8	*	M6	M8	F	25	T	E	III	14	✓	✓	13	13	13	C							
				1/4"	2G	2R	0 20 1.8 1.8	20101		*	B2 B5	*	S2	S1	S8	*	M6	M8	F	22	25	T	E	III	14	✓	✓	18	12	8	A						
				1/4"	2G	2R	0 25 1.6 1.4	20101		*	B2 B5	*	S2	S1	S8	*	M12	M5	F	22	25	T	E	III	14	✓	✓	18	12	8	A						
				1/4"	2G	2R	0 25 3 4	20126		*	B2 B5	*	S2	S1	S8	*	M6	M8	F	25	T	E	III	14	✓	✓	13	13	13	C							
				1/8"	1G	1R	0 32 2.5 3.5	20126		*	B2 B5	*	S2	S1	S8	*	M12	M5	F	25	T	E	III	14	✓	✓	13	13	13	C							
				1/8"	1G	1R	0 40 2.2 2.5	20126		*	B2 B5	*	S2	S1	S8	*	M12	M5	F	25	T	E	III	14	✓	✓	13	13	13	C							
				1/8"	1G	1R	0 50 1.8 1.8	20126		*	B2 B5	*	S2	S1	S8	*	M11	M4	F	25	T	E	III	14	✓	✓	13	13	13	C							
				1/8"	1G	1R	0 60 1.2 0.7	20101		*	B2 B5				S8	*	M11	M4	F	22	25	T	E	III	14	✓	✓	18	12	8	A						
				1/8"	1G	1R	0 63 1.6 1.4	20126		*	B2 B5				S8	*	M11	M4	F	25	T	E	III	14	✓	✓	13	13	13	C							
				1/8"	1G	1R	① 0 100 1.2 0.7	20126V01		*	B2 B5				S8	*	M11	M4	F	25	T	E	III	14	✓	✓	13	13	13	C							
				1/8"	1G	1R	0 150 0.8 0.5	20101		*	B2 B5				S8	*	M11	M4	F	22	25	T	E	III	14	✓	✓	18	12	8	A						
				1/8"	1G	1R	0 225 0.8 0.5	20126V01		*	B2 B5				S8	*	M11	M4	F	25	T	E	III	14	✓	✓	13	13	13	C							
				1/8"	1G	1R	0 4 6 12	20126		*	B2 B5	*	S2	S1	S8	*	M6	M8	F	25	T	E	III	14	✓	✓	13	13	13	D							
				1/8"	1G	1R	② 0 100 1.2 0.7	3352V01				B2 B5						S6		*																	

SOLENOID 14									
Cable Entry	T	ÖcÄ	ÖcÄ	ÖcÄ	E	ÖcÄ	ÖcÄ	ÖcÄ	ÖcÄ
M20 x 1.5	FJ	FITÜ	HU	ITÜ	ITÜ	ITÜ	ITÜ	ITÜ	ITÜ
M25 x 1.5	F	ITÜ	ITÜ	ITÜ	ITÜ	ITÜ	ITÜ	ITÜ	ITÜ
1/2" NPT	F	ITÜ	ITÜ	ITÜ	ITÜ	ITÜ	ITÜ	ITÜ	ITÜ

SOLENOID 18									
Cable Entry	T	ÖcÄ	ÖcÄ	E	ÖcÄ	ÖcÄ	ÖcÄ	ÖcÄ	ÖcÄ
M20 x 1.5	FJ	FITÜ	HU	ITÜ	ITÜ	ITÜ	ITÜ	ITÜ	ITÜ
M25 x 1.5	F	ITÜ	ITÜ	ITÜ	ITÜ	ITÜ	ITÜ	ITÜ	ITÜ
1/2" NPT	F	ITÜ	ITÜ	ITÜ	ITÜ	ITÜ	ITÜ	ITÜ	ITÜ

	F
Flying lead IP54	06
Flying lead IP67	01

Code	Construction Reference
A	1, 3, 5, 7
B	2, 4, 6, 8
C	9, 13
D	10, 14

- \* = Do not specify when opted for. Refer Page # 22 for Value of \*
- ✓ = Options available
- ① = Do not Opt, for CO2 Media.
- ② = Only for CO2 Media.

20123 Model is discontinued Offer Alternat Model 20172V02LP  
Contact Rotex if must to Offer Specific Model

## 1/2 DIRECT ACTING NORMALLY CLOSED SOLENOID VALVE

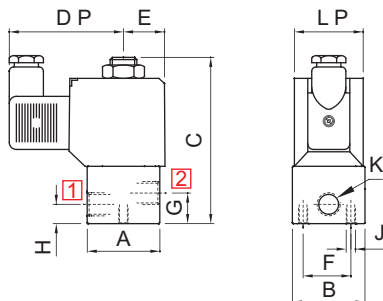
### ORDERING CODE AND EXAMPLE VALVE + SOLENOID

VALVE TYPE – SIL – SUFFIX – ORIFICE – PORT CONNECTION – BODY AND INTERNALS – MANUAL OVERRIDE – SEAL – MEDIA + SIZE – VOLTAGE – CURRENT – SOLENOID ENCLOSURE – SPECIAL VERSION – POWER – INSULATION – APPROVAL – SIL – ACCESSORIES SOLENOID

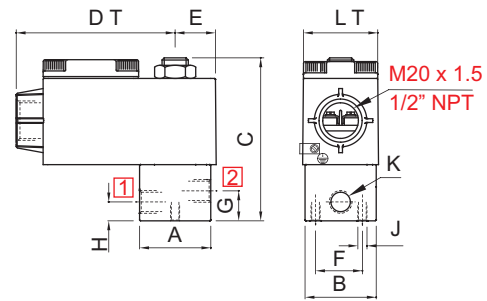
eg.: 20126-4-2G+II-230V-50Hz-25-RC; 20101-2.2-2R-B5-M6-S2+III-24V DC-37-CO-H-01

### DIMENSIONS

All Dimensions are in mm

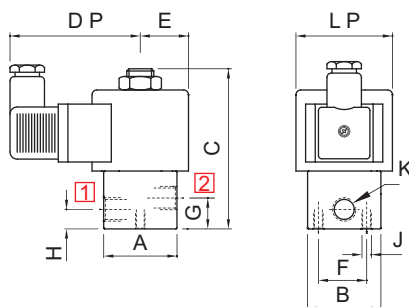


PLUG IN SOLENOID TYPE 22

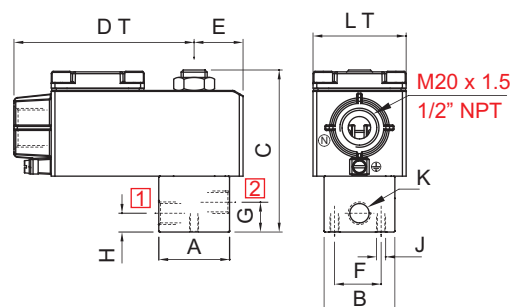


TERMINAL BOX/ Ex d TYPE 16, 19, 37, 39, 58, 58LT

K (PORT SIZE)	A	B	C	DP	DT	E	F	G	H	J	LP	LT	BODY MATL.	CONST. REF.
<b>VALVE TYPE : 20101</b>														
1/8", 1/4"	38	38	87	60	85	22	25	16	10	M6	36	40	AL, BR	1
3/8", 1/2"	60	38	95	60	85	22	25	20.5	20.5	M6	36	40	AL, BR	2
1/8", 1/4"	44	Ø48	91	60	85	22	25	17	10.5	M6	36	40	SS	3
3/8", 1/2"	58	Ø62	111	60	60	22	25	14	14	M6	36	40	SS	4



PLUG IN SOLENOID TYPE 25



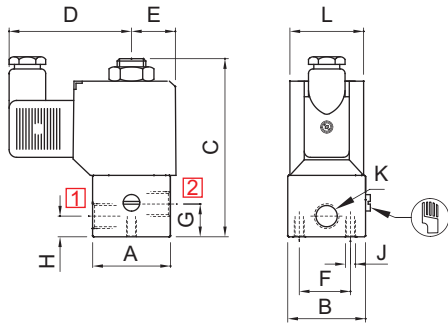
TERMINAL BOX/ Ex d LARGE ENCLOSURE  
TYPE 16, 19, 37, 39, 58, 58LT, LC

K (PORT SIZE)	A	B	C	PD	D	TE	F	G	H	J	LP	LT	BODY MATL.	CONST. REF.
<b>VALVE TYPE : 20101</b>														
1/8", 1/4"	38	38	87	66	97	26	25	16	10	M6	Ø50	50	AL, BR	5
3/8", 1/2"	60	38	95	66	97	26	25	20.5	20.5	M6	Ø50	50	AL, BR	6
1/8", 1/4"	44	Ø48	91	66	97	26	25	17	10.5	M6	Ø50	50	SS	7
3/8", 1/2"	58	Ø62	111	68	103	28	25	14	14	M6	Ø50	50	SS	8
<b>VALVE TYPE : 20126</b>														
1/8", 1/4"	50	50	102	68	103	28	25	17	10.5	M6	Ø50	50	AL, BR	9
3/8", 1/2"	65	50	108	68	103	28	25	14	14	M6	Ø50	50	AL, BR	10
1/8"	44	Ø48	91	66	103	28	25	17	10.5	M6	Ø50	50	SS	13
3/8"	58	Ø62	111	68	103	29	25	14	14	M6	Ø50	50	SS	14

## 1/2 DIRECT ACTING NORMALLY CLOSED SOLENOID VALVE

### DIMENSIONS

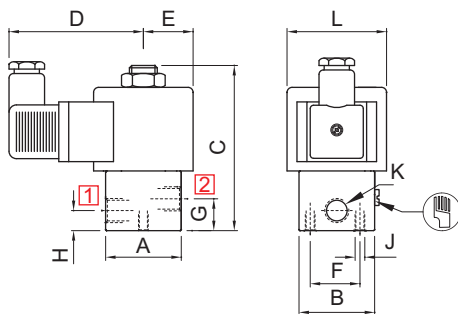
All Dimensions are in mm



#### PLUG IN SOLENOID TYPE 22

K (PORT SIZE)	A	B	C	D	E	F	G	H	J	L	BODY MATL.	CONST. REF.
VALVE TYPE : 20101 WITH MO												
1/8", 1/4"	38	38	87	60	22	25	16	10	M6	36	AL, BR	1
3/8", 1/2"	60	38	95	60	22	25	20.5	20.5	M6	36	AL, BR	2
1/8", 1/4"	44	Ø48	91	60	22	25	17	10.5	M6	36	SS	3
3/8", 1/2"	58	Ø62	111	60	22	25	14	14	M6	36	SS	4

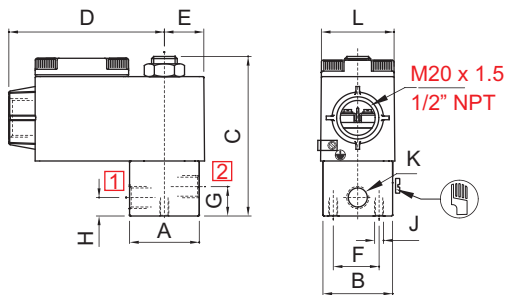
MANUAL OVERRIDE OPTIONALLY PROVIDED



#### SQUARE PLUG IN SOLENOID TYPE 25

K (PORT SIZE)	A	B	C	D	E	F	G	H	J	L	BODY MATL.	CONST. REF.
VALVE TYPE : 20101 WITH MO												
1/8", 1/4"	38	38	87	66	25	25	16	10	M6	Ø50	AL, BR	5
3/8", 1/2"	60	38	95	66	25	25	20.5	20.5	M6	Ø50	AL, BR	6
1/8", 1/4"	44	Ø48	91	66	25	25	17	10.5	M6	Ø50	SS	7
3/8", 1/2"	58	Ø62	111	68	22	25	14	14	M6	Ø50	SS	8
VALVE TYPE : 20126 WITH MO												
1/8", 1/4"	50	50	104	68	25	25	17	10.5	M6	Ø50	AL, BR	9
3/8", 1/2"	65	50	104	68	25	25	14	14	M6	Ø50	AL, BR	10
1/4"	44	Ø48	91	66	25	25	17	10.5	M6	Ø50	SS	13
1/2"	58	Ø62	111	68	29	25	14	14	M6	Ø50	SS	14

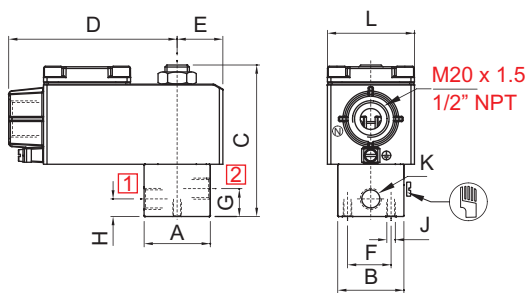
MANUAL OVERRIDE OPTIONALLY PROVIDED



#### TERMINAL BOX/ Ex d ENCLOSURE, TYPE 16, 19, 37, 39, 58, 58LT

K (PORT SIZE)	A	B	C	D	E	F	G	H	J	L	BODY MATL.	CONST. REF.
VALVE TYPE : 20101 WITH MO												
1/8", 1/4"	38	38	87	85	22	25	16	10	M6	39	AL, BR	1
3/8", 1/2"	60	38	95	85	22	25	20.5	20.5	M6	39	AL, BR	2
1/8", 1/4"	44	Ø48	91	85	22	25	17	10.5	M6	39	SS	3
3/8", 1/2"	58	Ø62	111	60	22	25	14	14	M6	39	SS	4

MANUAL OVERRIDE OPTIONALLY PROVIDED

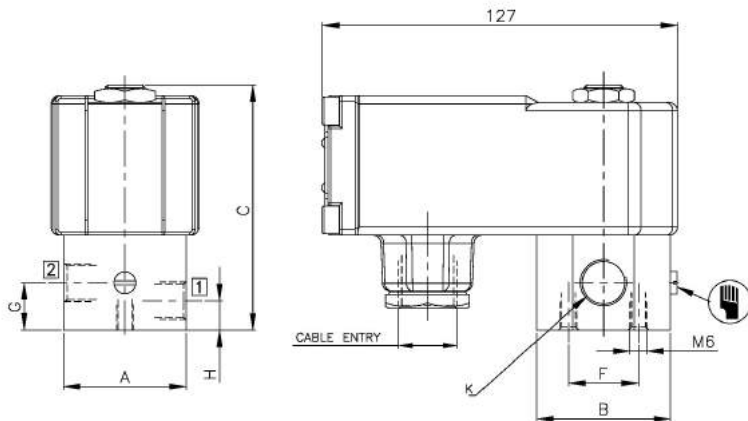


#### TERMINAL BOX/ Ex d LARGE ENCLOSURE, TYPE 16, 19, 37, 39, 58, 58LT, LC

K (PORT SIZE)	A	B	C	D	E	F	G	H	J	L	BODY MATL.	CONST. REF.
VALVE TYPE : 20101 WITH MO												
1/8", 1/4"	38	38	87	97	26	25	16	10	M6	50	AL, BR	5
3/8", 1/2"	60	38	95	97	26	25	20.5	20.5	M6	50	AL, BR	6
1/8", 1/4"	44	Ø48	91	97	26	25	17	10.5	M6	36	SS	7
3/8", 1/2"	58	Ø62	111	103	28	25	14	14	M6	50	SS	8
VALVE TYPE : 20126 WITH MO												
1/8", 1/4"	50	50	102	103	28	25	17	10.5	M6	50	AL, BR	9
3/8", 1/2"	65	50	102	103	28	25	14	14	M6	50	AL, BR	10
1/4"	44	Ø48	91	103	28	25	17	10.5	M6	50	SS	13
1/2"	58	Ø62	111	103	29	25	14	14	M6	50	SS	14

MANUAL OVERRIDE OPTIONALLY PROVIDED

## 1/2 DIRECT ACTING NORMALLY CLOSED SOLENOID VALVE

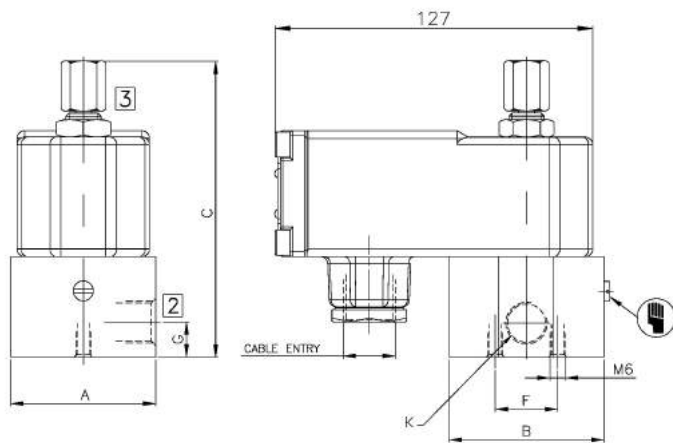


BCE SOLENOID/ Ex d TYPE 87

K (PORT SIZE)	A	B	C	F	G	H	BODY MATL.	CONST. REF.
<b>VALVE TYPE : 20101</b>								
1/8", 1/4"	38	38	87	25	10.5	16	AL, BR	1
3/8", 1/2"	60	38	94	25	20.5	20.5	AL, BR	2
1/8", 1/4"	44	Ø48	87	25	10.5	17	SS	3
3/8", 1/2"	58	Ø62	93	25	14	14	SS	4

6

## 1/2 DIRECT NORMALLY OPEN SOLENOID VALVE



BCE SOLENOID/ Ex d TYPE 87

K (PORT SIZE)	A	B	C	F	G	BODY MATL.	CONST. REF.
<b>VALVE TYPE : 20201</b>							
1/8", 1/4"	38	38	105	25	16	AL, BR	1
3/8", 1/2"	60	38	115	25	20.5	AL, BR	2
1/8", 1/4"	44	Ø48	105	25	17	SS	3
3/8", 1/2"	58	Ø62	115	25	14	SS	4

