

Footprint



IOL Chemicals & Pharmaceuticals Limited

- Industry - Pharmaceutical API and Speciality chemicals
- 9 number of Kirloskar's Double Effect Steam Fired Vapour Absorption Chillers with the combined load of 1885 TR are being used by IOLCP, India's leading generic pharmaceutical company, and is a significant player in the organic chemicals space for process cooling applications in their plant based out of Barnala, Punjab.



JK Paper Limited

- Industry - Pulp & Paper
- JK Papers Limited, India's Leading Paper Manufacturing Company, is using 3 nos. of Kirloskar's Vapour Absorption Chillers at their CLO2 Plant with a combined capacity of 1700 TR. These chillers are operational 24 hours a day, seven days a week, assisting customers in running a smooth, trouble-free operation.



Grasim Industries

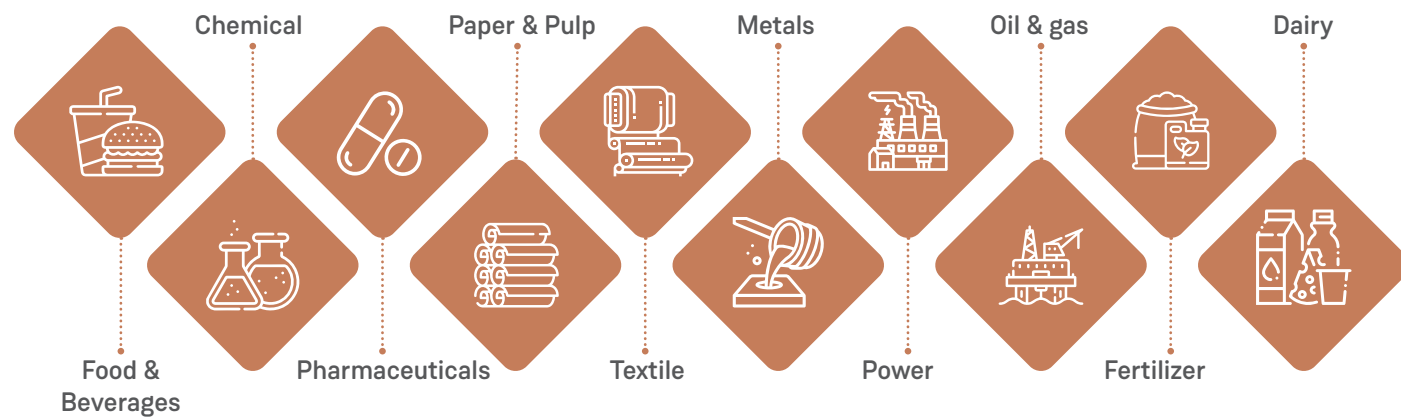
- Industry - Global Conglomerate
- Grasim Industries Limited, a flagship company of the global conglomerate Aditya Birla Group, is using 8 nos. of Kirloskar's Double Effect Vapour Absorption Chillers, having a combined load of 2950 TR, for their various plants across various applications. These chillers operate on steam from boilers and are in continuous operation.



Govind Milk & Milk Products Private Limited

- Industry - Dairy & Milk Products
- The company is a leading name in the dairy industry focused on delivering healthy products to the customer, is using Kirloskar's Zero Degree Chilled Water Vapour Absorption Chiller to cater to the cooling requirements of 300 TR for their pasteurization plant and other cooling requirements.

Industry Catered



Kirloskar Pneumatic Company Limited

A Kirloskar Group Company

REGD. OFFICE : Pune : Hadapsar Industrial Estate, PUNE 411 013.

Ph : 020 - 26727000 Fax : 020 - 26870297

Email: vac@kirloskar.com

CIN:L29120PN1974PLC110307

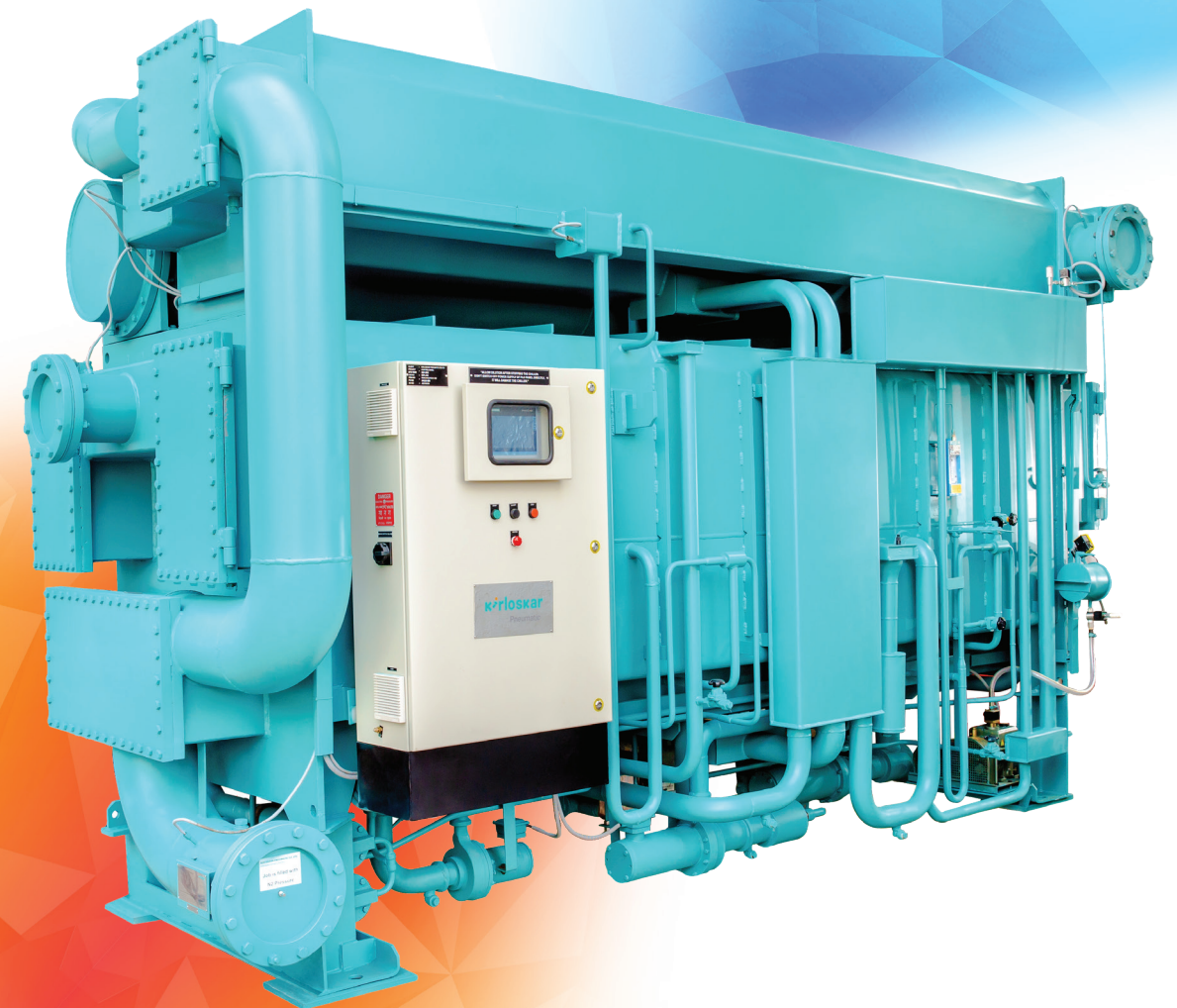
Mark "Kirloskar" used in any form as prefix or suffix is owned by Kirloskar Proprietary Limited and Kirloskar Pneumatic Company Limited is the Permitted user.

kirloskar
Pneumatic

www.kirloskarpneumatic.com

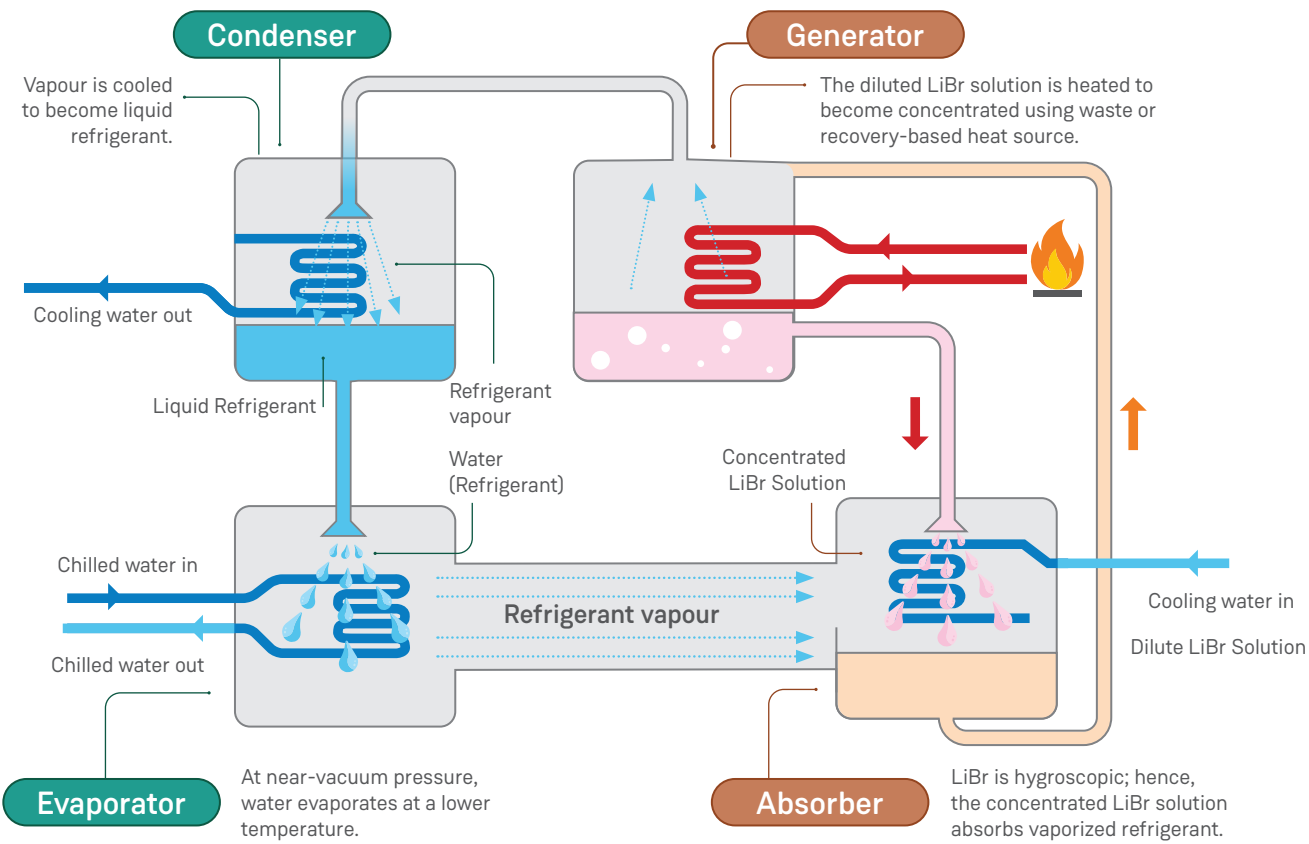
kirloskar
Pneumatic

Kirloskar Vapour Absorption Chiller Product Profile



VAC_PP070722_01

Principle of Operation



Para flow Technology - Advanced and Reliable Technology for Consistent Performance

Kirloskar's Vapour Absorption Chillers operate on an advanced Para-flow design. This design ensures that there is no condition of low temperature and high concentration which makes the chiller crystallization free, ensuring the consistent, uninterrupted performance of the vapour absorption chiller.

Cost of Ownership - Lowest In Class

- No Blow-down required
- Uses Waste or Available Heat Source at Site
- No LiBr Top Up
- Fastest Payback in the Product Segment

Ergonomic Design - Ease of Operation

- Online LiBr Filtration
- Pressurized Spray System
- Marine Type Headers

Advanced Controls and Safeties - Best In Industry

- Proactive PLC Based Control Panel
- Crystallization Free
- PLC Based Automatic Purging w/o Manual Intervention
- Quick Start up - Smart Dilution

Salient Feature



No LiBr Top Up



Advanced Para Flow Design



Crystallization Free Design



Low Life Cycle Cost



Better Part Load Efficiency



Proactive PLC Based Control Panel



Online LiBr Filtration



Pressurized Spray System



Clean Refrigerant - No Blow down



Marine Headers



Quick Start Up



Automatic Purging

Product Offering

Single Effect Steam Driven Vapour Absorption Chiller

- Capacity : 50 - 1500 TR
- Heat Source : Steam
- Steam Pressure : 0.5 - 3.0 kg/cm²(g)
- COP: 0.75

Single Effect Hot Water Driven Vapour Absorption Chiller

- Capacity : 50 - 1500 TR
- Heat Source : Hot Water
- Hot Water Temperature : 80 - 120°C
- COP: 0.75

Double Effect Hot Water Driven Vapour Absorption Chiller

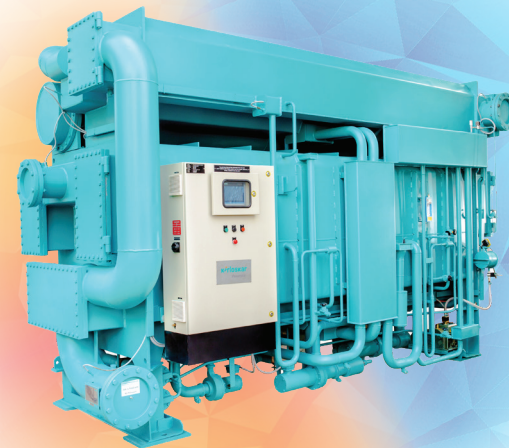
- Capacity : 50 - 1500 TR
- Heat Source : Hot Water
- Hot Water Temperature: 150 - 180°C
- COP : 1.5

Double Effect Steam Driven Vapour Absorption Chiller

- Capacity : 50 - 2000 TR
- Heat Source : Steam
- Steam Pressure : 3.5 - 8.0 kg/cm²(g)
- COP : 1.5

Composite Chiller

- Capacity : 25 - 200 TR
- Brine Temperature : -35 to -5 °C
- Refrigerant : R404, R134a, Ammonia
- Heat Source : Steam / Hot Water / Exhaust Gas / Fuel



Zero Degree Vapour Absorption Chiller

- Capacity : 50 - 1000 TR
- Heat Source : Steam / Hot Water / Exhaust Gas / Fuel

Double Effect Direct Fired Vapour Absorption Chiller

- Capacity : 50 - 2000 TR
- Heat Source : Natural Gas / Diesel / LPG / Propane / Bio Gas
- COP : 1.5

Chiller + Hot Water Generator

- Cooling Capacity : 50 - 2000 TR
- Heating Capacity : 130 - 5275 kW
- Heat Source : Steam / Hot Water / Exhaust / Fuel

Double Effect Exhaust Driven Vapour Absorption Chiller

- Capacity : 50 - 1500 TR
- Heat Source : Exhaust Gas
- Exhaust Gas Temperature : 250 - 600°C
- COP : 1.5

Ultra Low Vapour Pressure Vapour Absorption Chiller

- Capacity: 50 - 1000 TR
- Heat Source : CP Vapour / Ultra Low Pressure Steam
- Steam Pressure : <0.5 kg/cm²(g)