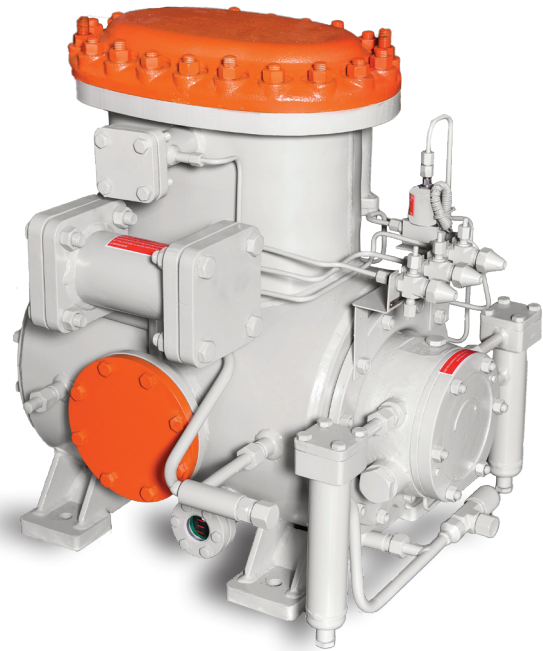


**karloskar**  
Pneumatic

# PCX SERIES

Refrigeration Compressors

10%  
Higher  
COP



Dairy



Ice-Plant



Fruits & Vegetables

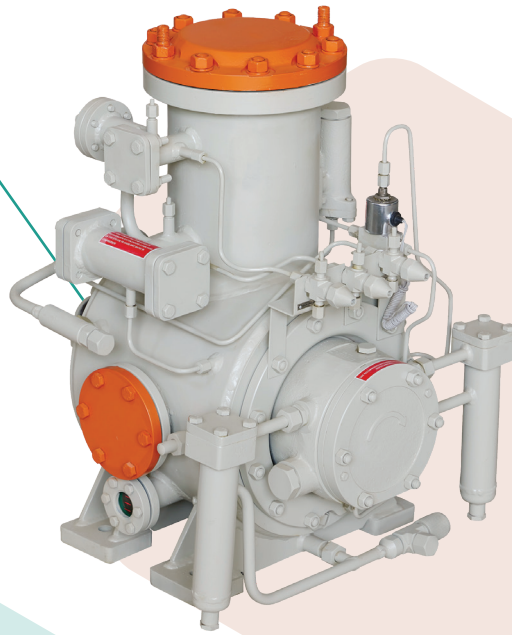


Cold Storage



Beverages

# PCX1



### Technical Data

No. of Cylinders - 1,  
Bore x Stroke - 110 X 85 mm,  
Swept Vol - 72.5 m<sup>3</sup>/hr at  
Max. Speed - 1500 RPM

### Compressor Model

PCX1

### Dimensions

L x W x H - 600 x 550 x 725 mm

### Weight

180 kg - (w/o flywheel)

### Refrigerants

NH3, R22, R134a, R404a and R507

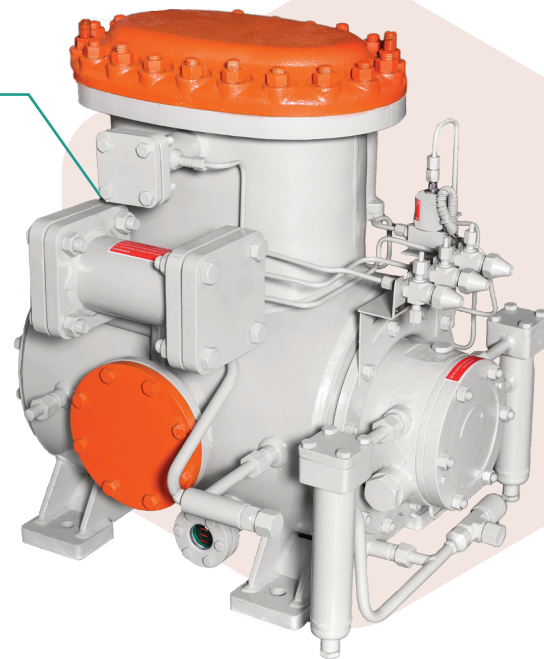
## PCX Series Features

- Higher COP at full and part load operation
- High efficiency suction & delivery valve
- Power saving
- Low Vibration, low noise level
- Ease of service
- Low cost of maintenance
- Compact design - Less footprint
- Easy to package and to install
- Drive arrangement - Direct & Belt driven

## Certification and Awards

- 🏆 ISO 9001-2015, ISO 14001-2015, ISO 45001-2018.
- 🏆 Award of Excellence from Cold Storage Association of India.
- 🏆 CII Exim Bank Award for Strong Commitment towards Excellence.
- 🏆 CII Excellence Award in Energy Management.
- 🏆 CII Best Kaizen Award.
- 🏆 Employer Branding Award as Best Employer Managing Health at work.

# PCX2



### Technical Data

No. of Cylinders - 2,  
Bore x Stroke - 110 X 85 mm,  
Swept Vol - 140.7 m<sup>3</sup>/hr at  
Max. Speed 1450 RPM

### Compressor Model

PCX2

### Dimensions

L x W x H - 745 x 560 x 685 mm

### Weight

250 kg - (w/o flywheel)

### Refrigerants

NH3, R22, R134a, R404a and R507

## Rating Chart

PCX1						PCX2				
Refrigerant	Evaporating Temp °C	Condensing Temp °C				Evaporating Temp °C	Condensing Temp °C			
		35		40			35		40	
		Qo 'kW'	Pe 'kW'	Qo 'kW'	Pe 'kW'		Qo 'kW'	Pe 'kW'	Qo 'kW'	Pe 'kW'
Ammonia	10	99.3	13.8	96.8	15.7	10	198.5	27.6	193.5	31.4
	5	82.3	13.7	79.1	15.3	5	164.6	27.3	158.2	30.5
	0	67.6	13.5	64.5	14.6	0	135.2	26.9	128.9	29.1
	-5	54.9	13.1	52.8	13.8	-5	109.8	26.1	105.5	27.5
	-10	44.0	12.0	41.7	12.3	-10	87.9	24.0	83.3	24.6
	-15	33.2	10.8	31.5	11.2	-15	66.3	21.6	62.9	22.4
R22	10	89.6	16.5	84.5	18.1	10	179.1	32.9	168.9	36.1
	5	74.5	16.0	69.9	17.2	5	149.0	32.0	139.8	34.3
	0	61.8	15.3	58.0	16.3	0	123.5	30.5	116.0	32.5
	-5	50.3	14.4	47.4	15.1	-5	100.6	28.8	94.8	30.2
	-10	40.6	13.3	38.1	13.8	-10	81.1	26.6	76.1	27.6
	-15	32.1	12.0	30.0	12.4	-15	64.2	24.0	60.0	24.8
	-20	25.1	10.8	23.4	10.9	-20	50.2	21.5	46.8	21.8
R134a	10	46.3	10.2	43.4	10.6	10	92.5	20.4	86.8	21.2
	5	37.8	9.5	35.3	9.9	5	75.5	18.9	70.6	19.8
	0	30.5	8.9	28.4	9.4	0	61.0	17.7	56.7	18.7
	-5	24.3	8.3	22.5	8.7	-5	48.6	16.5	45.0	17.4
	-10	19.1	7.7	17.5	8.0	-10	38.2	15.4	35.0	15.9
	-15	14.7	6.9	13.3	7.0	-15	29.3	13.8	26.5	14.0
	-20	10.9	6.1	9.8	6.1	-20	21.8	12.1	19.5	12.1

Approximate ice making capacity with Ammonia refrigerant at (-) 15°C evaporating temp & 40°C Condensing temp.

### Notes

- Qo = Refrigeration effect (Cooling Capacity)
- Pe = Power required at compressor shaft
- Capacity is at 1450 rpm
- Power Consumption and Capacities are proportional to the speed.
- Capacity is at 0°C superheat for Ammonia, 5°C for R22 & 134a refrigerant
- Interpolation of ratings is permissible
- For any condition outside the range given above please refer to KPCL.

PCX1	Compressor Speed 'rpm'	600	1000	1450
	Ice Produced in 24 hrs 'Ton'	1.9	3.1	4.5
	Required Shaft Power 'kW'	4.6	7.7	11.2
PCX2	Compressor Speed 'rpm'	600	1000	1450
	Ice Produced in 24 hrs 'Ton'	3.7	6.2	8.9
	Required Shaft Power 'kW'	9.2	15.4	22.4

\* Above capacities are subject to proper system design.

KPCL reserves the right to modify the information given in the product brochure.

# Kirloskar Pneumatic Company Limited

## A Kirloskar Group Company

**REGD. OFFICE:** Plot No. 1, Hadapsar Industrial Estate, Pune 411 013. Ph: 020-26727000 Fax: 020-26870297  
Email: [acr-compressors@kirloskar.com](mailto:acr-compressors@kirloskar.com), [imd@kirloskar.com](mailto:imd@kirloskar.com), [kpclassist@kirloskar.com](mailto:kpclassist@kirloskar.com)

**MUMBAI :** 1002, 10<sup>th</sup> Floor, Vikas Centre,  
Dr. C. G. Road, Nr. Basant Cinema, Chembur (East),  
Mumbai 400 074  
Tel: 022 - 25219500  
Fax: 022 - 25202516  
E-mail: [rajesh.hotwani@kirloskar.com](mailto:rajesh.hotwani@kirloskar.com),  
[netra.ghangurde@kirloskar.com](mailto:netra.ghangurde@kirloskar.com)

**AHMEDABAD:** 303, 'Samruddhi',  
Opp. Sakar III, P. O. Navjivan,  
Navrangpura, Ahmedabad- 380 014.  
Tel.: 079-27541898, 27540030.  
Fax: 27541898.  
E-mail: [arvind.shendage@kirloskar.com](mailto:arvind.shendage@kirloskar.com)

**CHENNAI :** 5<sup>th</sup> Floor, B-Wing Building  
KGN TOWERS, No.62, Ethiraj Salai,  
Egmore, Chennai 600 008  
Tel: 044 - 28193066, 28190436, 28192092,  
Fax: 044 - 28194937  
E-mail: [v.anjaiah@kirloskar.com](mailto:v.anjaiah@kirloskar.com),  
[trimala.patro@kirloskar.com](mailto:trimala.patro@kirloskar.com)

**HYDERABAD :** 3-5-907, 403-404,  
Mahavir Lok, Himayatnagar,  
Hyderabad 500 029  
Tel: 040 - 23260743, 23260746,  
E-mail: [kpclhyderabad@kirloskar.com](mailto:kpclhyderabad@kirloskar.com),  
[gopalkrishna.Malawade@kirloskar.com](mailto:gopalkrishna.Malawade@kirloskar.com)

**KOLKATA :** 15 Ganesh Chandra Avenue,  
Kolkatta 700 013  
Tel: 033-22119080, 22119081,  
Fax: 033 - 22365586  
E-mail: [sajal.mukherjee@kirloskar.com](mailto:sajal.mukherjee@kirloskar.com)

**NEW DELHI:** 208, Meghdoot,  
94, Nehru Place,  
New Delhi-110 019.  
Tel.: 011-46561664/66.  
Fax: 46561653.  
E-mail: [amit.srivastava1@kirloskar.com](mailto:amit.srivastava1@kirloskar.com)

**LUCKNOW:** 16, Vidhan Sabha Marg,  
Lucknow-226 001.

Tel.: 0522- 4028677, 2627120  
Fax: 2627120.  
E-mail: [kpcllucknow@kirloskar.com](mailto:kpcllucknow@kirloskar.com)

CIN: L29120PN1974PLC110307

[www.kirloskarpneumatic.com](http://www.kirloskarpneumatic.com)

N2721.000.584.00 V20.74