

EXPLORE THE
FINEST IN
**CARD
CLOTHING**



www.lakshmicardclothing.com

Lakshmi Card Clothing Mfg. Co. Pvt. Ltd. (LCC) was established in 1960 with Technical collaboration from a renowned Swiss company.

LCC is a part of the esteemed 'HOUSE OF LAKSHMI,' which is among the few vertically integrated textile groups worldwide. This textile conglomerate encompasses textile mills, textile machinery, and accessories manufacturing units. LCC holds the distinction of being one of the largest producer of Metallic Card Clothing and Card Service Machines. This achievement is made possible through consistent market research, product innovation, and a proactive approach in adopting new technologies.

At LCC, we contribute to the value chain at every stage, starting from sourcing high quality raw materials for manufacturing, quality assurance, efficient sales management, and prompt after-sales service. We are an ISO 9001 certified company, which recognizes our expertise in designing, manufacturing, supplying, and providing after-sales service for Card Clothing and Card Service Machines. We are honoured to be an original equipment supplier for Lakshmi Machine Works, one of the leading Card manufacturers.

The driving force behind our continual advancement in cutting-edge technology and cost-effective solutions is our strong customer-oriented research and development. At LCC, our primary goal is to achieve total customer satisfaction at every stage of operation.



Contents

CYLINDER WIRES	_____	04
DOFFER WIRES	_____	08
LICKERIN WIRES	_____	10
SPECIAL WIRES	_____	12
REVOLVING FLAT TOPS	_____	14
STATIONARY FLAT TOPS	_____	18
PRODUCT CODIFICATION	_____	21
STRIPPING FILLETS	_____	22
CARD CLOTHING - RECOMMENDATION CHART - COTTON	_____	26
CARD CLOTHING - RECOMMENDATION CHART - MAN MADE FIBRES	_____	27

CYLINDER WIRES

Setting New Standards for
Carding Efficiency and Quality

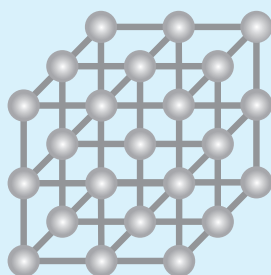
LCC's wide range of Cylinder wires represent a breakthrough in the field of carding technology. These wires are meticulously crafted using various alloy steels, ensuring an unmatched combination of quality, efficiency, and adaptability. These benefits make them a versatile choice for industries worldwide.

MATERIAL COMPOSITION

Based on the application & demands, LCC offers cylinder wires manufactured out of different alloy steels.

Different alloys may offer unique benefits in terms of wear resistance, flexibility, surface finish, among other characteristics.

This ensures that customers have access to a range of options and select the most suitable cylinder wire based on their specific requirements, thereby improving the efficiency and quality of their carding operations.



ULTIMA

(Tungsten, Vanadium Alloy Steel)

CHROMA

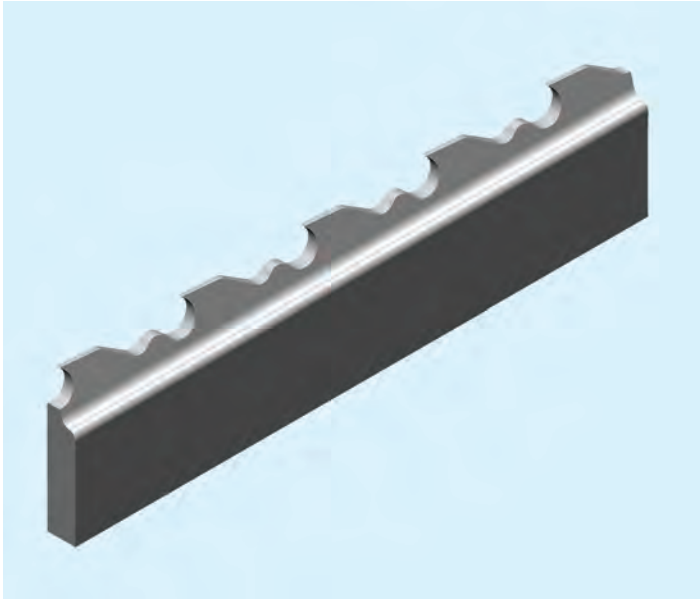
(Chromium Alloy Steel)

PERFORMA

(High Tensile Alloy Steel)

- Comprehensive range of cylinder wires to process various raw materials, Cotton, Synthetics & Blends, on all types of cards.
- Ideal tooth design that effectively holds fibres on the tips to enhance carding intensity.
- Superior physical properties and well designed wire geometry ensure excellent quality and consistency in performance.

PROFILES

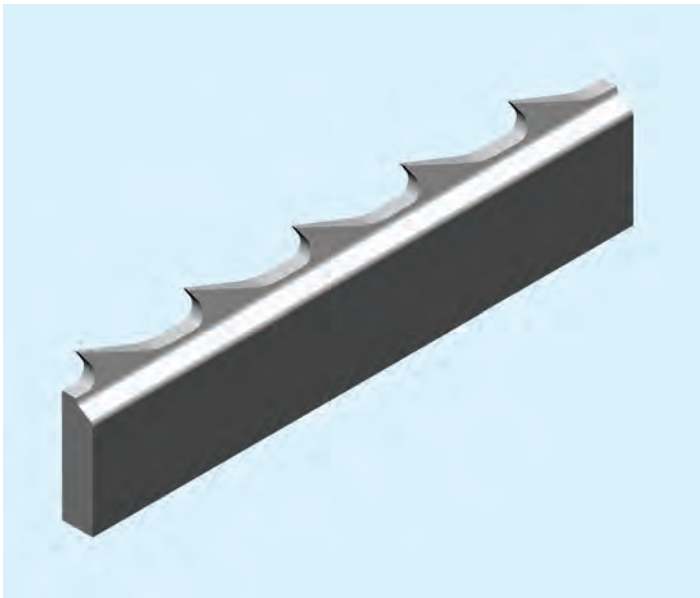
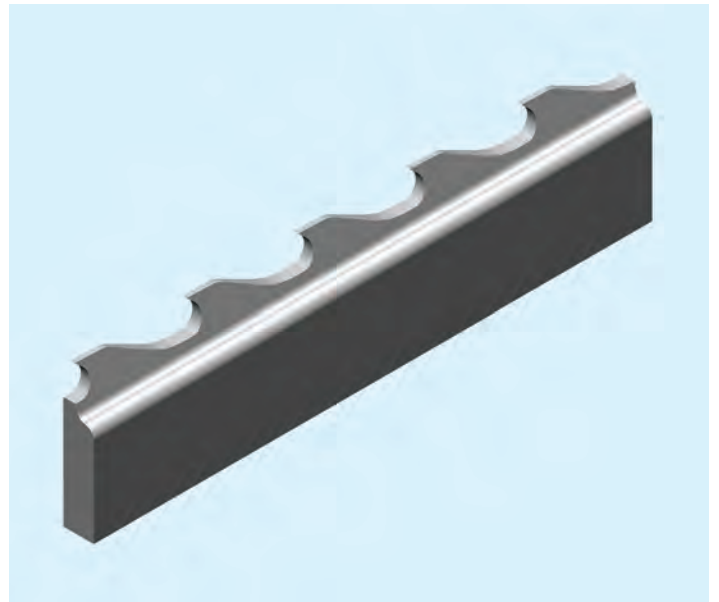


CENTURA

CENTURA (CE) tooth profile is designed to keep the fibres closer to the tip of the wire, facilitate intensive carding action and help efficient nep removal and reduction in yarn imperfections.

EVOLV 2X

EVOLV 2X (E/EQ) tooth profile with more supportive area to the working tip with variable density, enhances reliability and consistency in quality.





QUBEX spark


QUBEX SPARK (Q) tooth profile enhances carding performance of super high speed cards.


CYLINDER WIRE SPECIFICATIONS

Specifications	 Height (mm)	 Angle (Deg)	 Thickness (mm)	 TPI	 PPSI	Profile
----------------	---	---	--	---	--	---------

C 2035CE x 0.4 - 950	2.0	35° - 43°	0.4	P	950	
C 2035CE x 0.45 - 850	2.0	35° - 43°	0.45	P	850	

C 2035E x 0.4 - 950	2.0	35° - 43°	0.4	P	950	
C 2035E x 0.45 - 850	2.0	35° - 43°	0.45	P	850	
C 2025E x 0.5 - 812	2.0	25°	0.5	Q	812	
C 2040EQ x 0.4 - 950	2.0	40°	0.4	P	950	
C 2030EQ x 0.4 - 950	2.0	30°	0.4	P	950	
C 2040EQ x 0.45 - 850	2.0	40°	0.45	P	850	
C 2030EQ x 0.45 - 850	2.0	30°	0.45	P	850	
C 2040EQ x 0.5 - 760	2.0	40°	0.5	P	760	
C 2030EQ x 0.5 - 760	2.0	30°	0.5	P	760	

C 2040Q x 0.4 - 950	2.0	40°	0.4	P	950	
C 2040Q x 0.45 - 850	2.0	40°	0.45	P	850	
C 2035 x 0.4 - 1080	2.0	35°	0.4	R	1080	
C 2030 x 0.5 - 990	2.0	30°	0.5	T ₂	990	
C 2035 x 0.4 - 950	2.0	35°	0.4	P	950	
C 2035 x 0.5 - 863	2.0	35°	0.5	R	863	
C 2030 x 0.5 - 863	2.0	30°	0.5	R	863	
C 2025 x 0.5 - 812	2.0	25°	0.5	Q	812	
C 2025 x 0.5 - 760	2.0	25°	0.5	P	760	
C 2030 x 0.6 - 720	2.0	30°	0.6	R	720	
C 2025 x 0.6 - 720	2.0	25°	0.6	R	720	

C 2530 x 0.5 - 863	2.5	30°	0.5	R	863	
C 2525 x 0.5 - 812	2.5	25°	0.5	Q	812	
C 2525 x 0.5 - 760	2.5	25°	0.5	P	760	
C 2530 x 0.6 - 720	2.5	30°	0.6	R	720	
C 2525 x 0.6 - 720	2.5	25°	0.6	R	720	
C 2520 x 0.6 - 720	2.5	20°	0.6	R	720	
C 2520 x 0.7 - 616	2.5	20°	0.7	R	616	
C 2520 x 0.7 - 544	2.5	20°	0.7	P	544	

CE - Centura Teeth Profile

E / EQ - Evolv 2X Teeth Profile

Q - Qubex Teeth Profile

PPSI - Points Per Square Inch

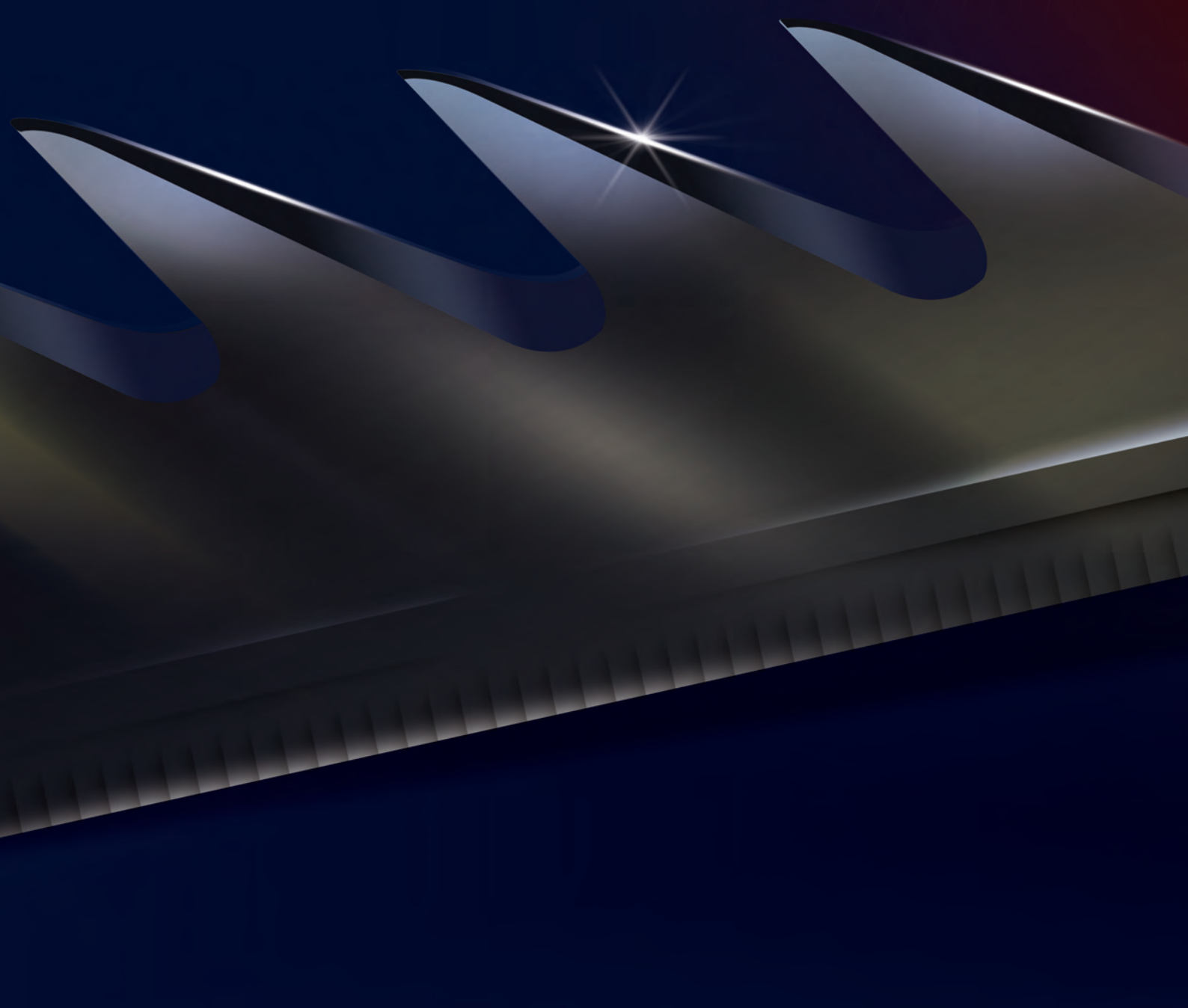
TPI - Teeth / Inch (P - 15, Q - 16, R - 17, T₂ - 19.5)

DOFFER WIRES

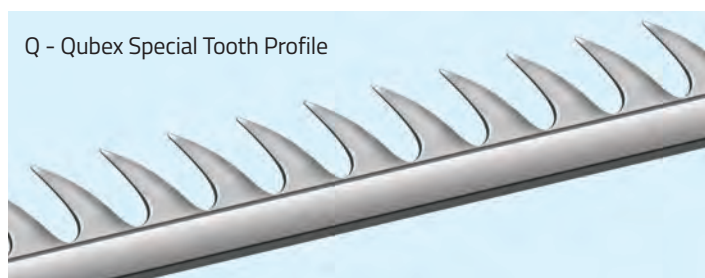
Transforming Carding Excellence with
Ground-breaking Results

The incorporation of sharper points plays a pivotal role in facilitating effective holding of fibres during the carding process. This enhanced holding capability contributes to improved wear resistance and reduced yarn imperfections.

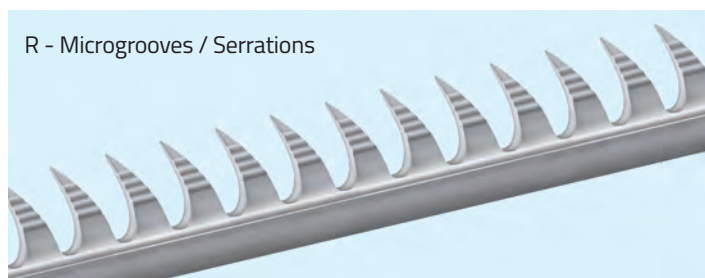
The precise holding of fibres prevents fibre entanglement or uneven distribution, resulting in smoother and more consistent yarn production. This leads to a higher-quality end product meeting the stringent requirements of the textile industry.



PROFILES




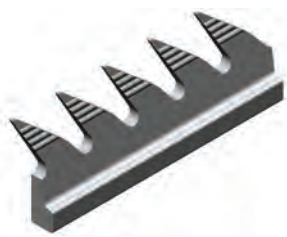


Sharper points for effective holding of fibres from Cylinder even at high Doffer speeds.



Micro-grooves (serrations) on the blade prevent web slippage in manmade fibre applications and ensure smooth transfer of fibre from Cylinder to Doffer.

DOFFER WIRE SPECIFICATIONS

Specifications	Height (mm)	Angle (Deg)	Thickness (mm)	TPI	PPSI	Profile
D 4030 x 0.7 - 508	4.0	30°	0.7	O	508	
D 4030E x 0.8 - 381	4.0	30°	0.8	M	381	
D 4030Q x 0.7 - 508	4.0	30°	0.7	O	508	
D 4030Q x 0.9 - 367	4.0	30°	0.9	N	367	
D 4030C x 0.9 - 367	4.0	30°	0.9	N	367	
D 4030Q x 1.0 - 280	4.0	30°	1.0	L	280	
D 4030Q x 0.85R - 388	4.0	30°	0.85	N	388	
D 4030Q x 0.9R - 367	4.0	30°	0.9	N	367	
D 4030C x 0.9R - 367	4.0	30°	0.9	N	367	
D 5030 x 0.9R - 338	5.0	30°	0.9	M	338	
D 5030 x 0.9 - 338	5.0	30°	0.9	M	338	
D 5030 x 1.0R - 305	5.0	30°	1.0	M	305	
D 4630 x 1.0R - 305	4.6	30°	1.0	M	305	
D 4635 x 1.0R - 305	4.6	35°	1.0	M	305	
D 4635 x 1.0R - 280	4.6	35°	1.0	L	280	
D 4640 x 1.0R - 280	4.6	40°	1.0	L	280	

E - Evolv 2X Teeth Profile

Q - Qubex Teeth Profile

C - Curved Teeth Profile

PPSI - Points Per Square Inch

TPI - Teeth / Inch (L - 11, M - 12, N - 13, O - 14)

LICKERIN WIRES

Next-Gen Carding Excellence with Efficient
Cleaning and Opening Performance

LCC's Lickerin wires are engineered using high-quality materials and innovative manufacturing techniques. This ensures that they can withstand the demanding conditions of carding operations, maintaining their effectiveness over an extended period. In addition to their remarkable durability, the Lickerin wires deliver top-class performance that surpasses industry standards.

These wires are meticulously crafted to optimise fibre control, allowing for precise and consistent carding results.

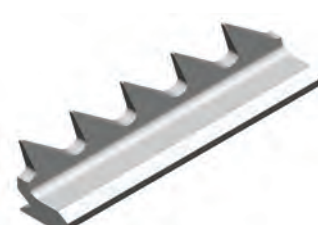
INTERLOCK LICKERIN WIRE


- Available in varied population for processing all types of fibres in latest generation cards.
- Special V-grooved interlocking arrangement helps uniform mounting.
- Made of Alloy steel for longer life.
- Improved sharpness on wire points.
- Opens and cleans efficiently for longer periods.

INTERLOCK LICKERIN WIRE SPECIFICATIONS

Specifications	Height (mm)	Angle (Deg)	Rows/Inch	TPI	PPSI	Profile
----------------	-------------	-------------	-----------	-----	------	---------

L 5020Q x 16VG - 208	5.0	20°	16VG	N	208	
L 5020G x 16VG - 160	5.0	20°	16VG	K	160	
L 5020G x 16VG - 112	5.0	20°	16VG	G	112	

L 5020 x 12VG - 114	5.0	20°	12VG	J ₂	114	
L 5010 x 12VG - 114	5.0	10°	12VG	J ₂	114	
L 5005 x 12VG - 114	5.0	05°	12VG	J ₂	114	

L 5010 x 12VG - 60	5.0	10°	12VG	E	60	
L 5005 x 12VG - 60	5.0	05°	12VG	E	60	
L 5010 x 8VG - 40	5.0	10°	8VG	E	40	
L 5005 x 8VG - 40	5.0	05°	8VG	E	40	
L 5005 x 8VG - 32	5.0	05°	8VG	D	32	

PPSI - Points Per Square Inch


TPI - Teeth / Inch (D - 4, E - 5, G - 7, J₂ - 9.5, K - 10, N - 13)

GROOVED LICKERIN WIRE

- Improved sharpness on wire points.
- Effective opening and cleaning of fibres.

GROOVED LICKERIN WIRE SPECIFICATIONS

Specifications	Height (mm)	Angle (Deg)	Foot Thickness (mm)	TPI	PPSI	Profile
----------------	-------------	-------------	---------------------	-----	------	---------

L 5510 x 1.20 - 64	5.5	10°	Variable	H	64	
L 5510 x 1.20 - 40	5.5	10°	Variable	E	40	
L 5505 x 1.20 - 40	5.5	05°	Variable	E	40	
L 5505 x 1.20 - 32	5.5	05°	Variable	D	32	
L 5500 x 1.20 - 32	5.5	00°	Variable	D	32	
L 5510 x 1.20 - 24	5.5	10°	Variable	C	24	

PPSI - Points Per Square Inch

TPI - Teeth / Inch (C - 3, D - 4, E - 5, H - 8)


** (Lickerin wires available in various thickness 1.10, 1.20, 1.20 CF, 1.40 & 1.45 mm)

SPECIAL WIRES

STRIPPER WIRE SPECIFICATIONS

Specifications	Height (mm)	Angle (Deg)	Thickness (mm)	TPI	PPSI	Profile
----------------	-------------	-------------	----------------	-----	------	---------

G2 40 - 28 x 1.8	4.0	-28°	1.8	G2	106	
------------------	-----	------	-----	----	-----	---

H 40 - 30 x 1.0	4.0	-30°	1.0	H	203	
H 35 - 30 x 1.0	3.5	-30°	1.0	H	203	

PPSI - Points Per Square Inch TPI - Teeth / Inch (G2 - 7.5, H - 8)

PERFECTA BORDER WIRE SPECIFICATIONS

Specifications	Height (mm)	Thickness (mm)
PERFECTA 1201	2.7	1.2
PERFECTA 1501	3.2	1.2
PERFECTA 1504	6.5	1.5



STEEL BORDER WIRE SPECIFICATIONS

Specifications	Height (mm)	Thickness (mm)
3.5 x 1.0	3.5	1.0
4.0 x 1.0	4.0	1.0




BLOWROOM BEATER WIRE SPECIFICATIONS

Specifications	Height (mm)	Angle (Deg)	Thickness (mm)	TPI	Profile
----------------	-------------	-------------	----------------	-----	---------


LAKSHMI / RTR

R 10/0 (B2 1000B x 2.5)	10	0°	2.5	B2	
R 10/10 (B2 1010B x 2.5)	10	10°	2.5	B2	

LAKSHMI / RTR

R 20/0 (A1 1000B x 2.5)	10	0°	2.5	A1	
R 20/10 (A1 1010B x 2.5)	10	10°	2.5	A1	

TRTZLR / CRSL

TR 11 (D2 55-10 x 6VG)	5.5	-10°	6VG	D2	
TR 14 (A2 7510 x 6VG)	7.5	10°	6VG	A2	

PPSI - Points Per Square Inch TPI - Teeth / Inch (A1 - 1.3, A2 - 1.7, B2 - 2.5, D2 - 4.7)

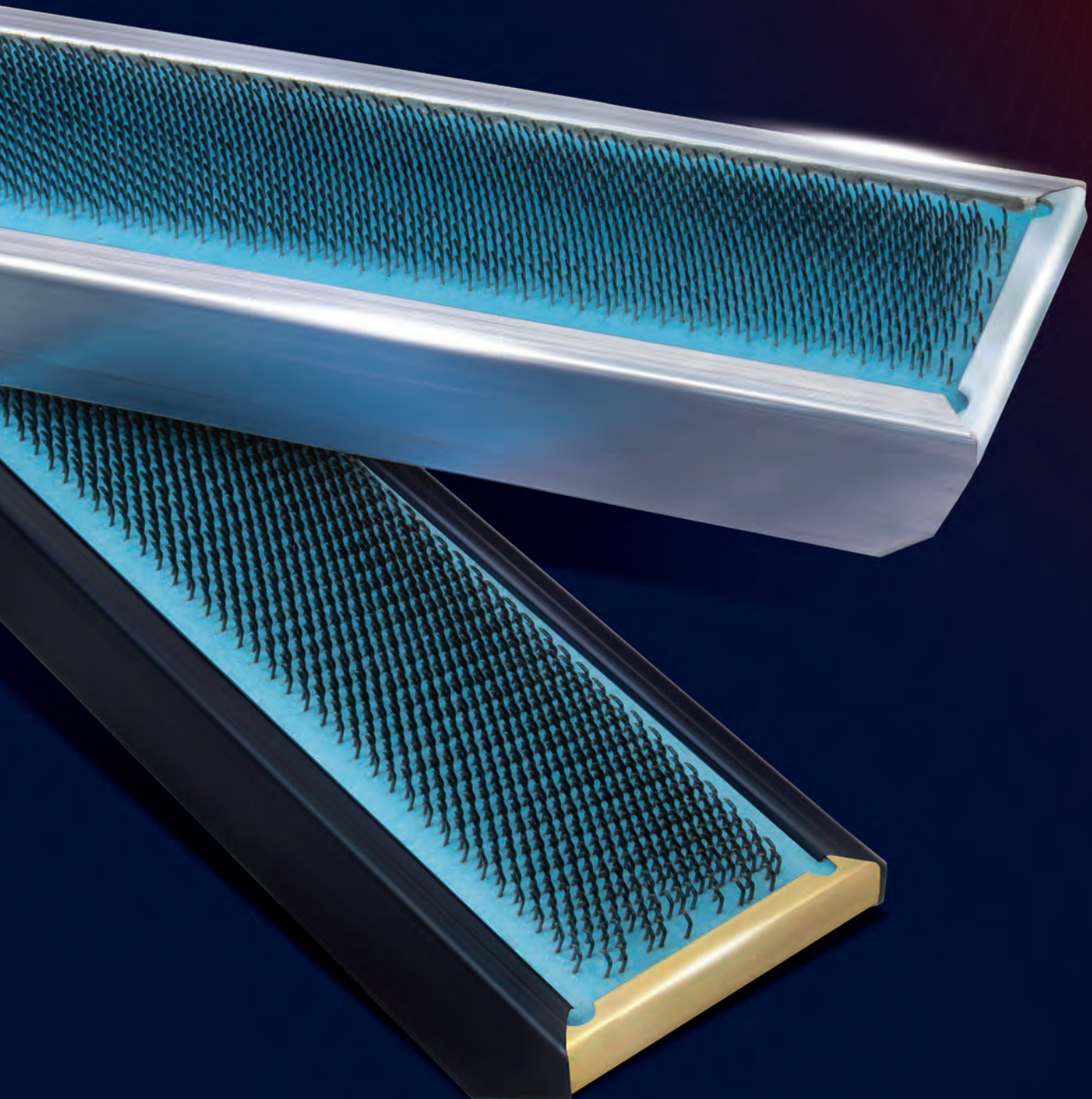
FEED ROLLER WIRE SPECIFICATIONS

Card Model	Specifications	Height (mm)	Angle (Deg)	Thickness (mm)	TPI	PPSI	Qty/Mc in Kgs	Profile
LC 361/363 Card Feed Roller (Old /New Version)	F2 5000 x 3.0	5.0	00°	3.0	F ₂	55	10	
LC 361 / 363 Chute Roller (Old Version)	F2 5000 x 2.0	5.0	00°	2.0	F ₂	83	18	
LC 636 Card Feed Roller (Old Version)	F2 5000 x 2.0	5.0	00°	2.0	F ₂	83	35	
LC 636 Card Feed Roller-140mmDia (New Version)	F2 5000B x 3.0	5.0	00°	3.0	F ₂	55	20	
LC 636 Chute Feed Roller (Old/New Version)	F2 5000B x 3.0	5.0	00°	3.0	F ₂	55	35	
LC 361 / 363 Chute Roller (New Version)	F2 5000B x 3.0	5.0	00°	3.0	F ₂	55	18	
DK 903 -TC 07 / TC 11-TC 19i Card Feed Roller	J 2500 x 2.0	2.5	00°	2.0	J	114	5/6.5	
TC 03 -TC 07 / TC11-TC 19i Chute Feed Roller	F2 3500B x 3.0	3.5	00°	3.0	F ₂	55	12/15	
C60/C70 Chute Feed Roller	F2 30-40 x 3.0 (Cotton)	3.0	-40°	3.0	F ₂	55	11	
C80 Chute Feed Roller	F2 30-40 x 3.0 (Cotton)	3.0	-40°	3.0	F ₂	55	15	
C60/C70 Chute Feed Roller	F2 3000 x 3.0 (Syn-Blends)	3.0	00°	3.0	F ₂	55	11	
C80 Chute Feed Roller	F2 3000 x 3.0 (Syn-Blends)	3.0	00°	3.0	F ₂	55	14	
CRSL Chute Feed Roller (MK7/MK8)	B 1005 x 2.2	10	05°	2.2	B	23	11/14	
Lakshmi C1/3 & RTR Card Feed Roller	Feed roller wire 5.0 x 1.5	5.0	15°	1.5	B	12	2.5	
TRTZLR DK 740 / DK 760 Card Feed Roller	Feed roller wire TR-5 (B 5015x1.5)	5.0	15°	1.5	B	12	2.5	
Lakshmi C1/3 & RTR Card Feed Roller	Spacer wire 2.5 x 2.3 x 2.0	2.5	NA	2.0	NA	NA	5.0	
TRTZLR DK 740 / DK 760 Card Feed Roller	Spacer wire 3.5 x 2.5	3.5	NA	2.5	NA	NA	5.0	

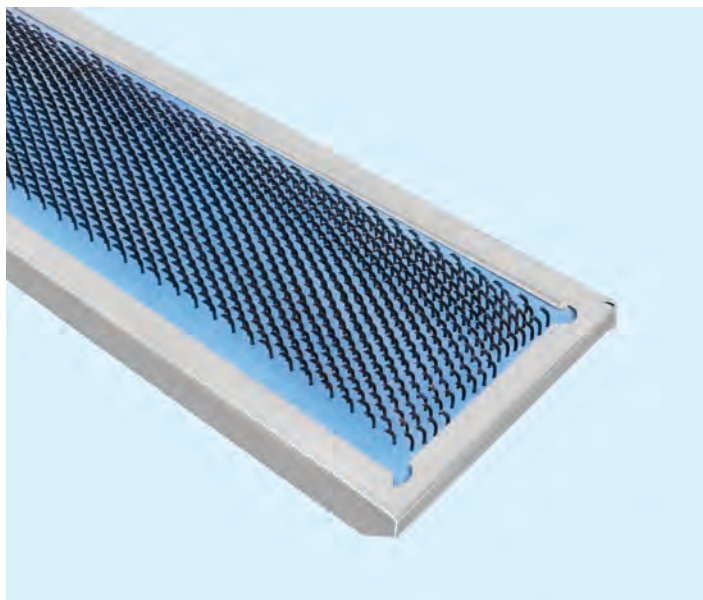
REVOLVING FLAT TOPS

Experience Unmatched
Quality and Consistency

High wear resistant alloy steel with special heat treatment with best technology of grinding. The fused rubber and cloth foundation ensures long life, high performance and high productivity. There are different types of revolving flat tops with unique setting pattern available for various applications - 40", 51" and 60" width.



EVOLV 2X



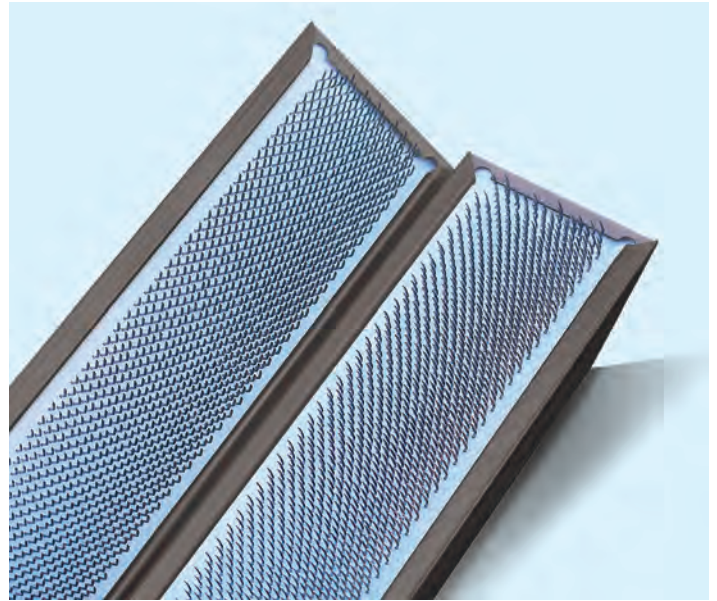
- High tensile alloy steel wire and stronger foundation for enhanced resilience of pins for super high production cards.
- New process technique adopted in side and shoulder grinding to enhance sharpness of flat wire pins for efficient nep removal.
- Infinitely progressive setting pattern results in better extraction of trash & seed particles and individualization of fibre.
- Reduction in wire height and special double convex wire to withstand enormous load and strain.

EVOLV 2X FLAT TOPS SPECIFICATIONS

Specifications	Height (mm)	PPSI	Applications
EVOLV 2X 400S	7.5	400	Regenerated fibre : Poly/Cotton Blends
EVOLV 2X 420	7.5	420	Cotton OE and up to 20's
EVOLV 2X 490	7.5	490	Cotton coarse up to 30's
EVOLV 2X 490S	7.5	490	Poly/Cotton Blends
EVOLV 2X 550	7.5	550	Cotton medium & fine above 30's
EVOLV 2X 600	7.5	600	Cotton fine above 30's
EVOLV 2X 740 (40" only)	7.5	740	Cotton fine above 60's

CONTRA

- Enhanced fibre separation action between cylinder to flat tops.
- Improved Nep removal efficiency.
- Reduction in yarn imperfections & classimat faults.
- Made of High Tensile Alloy Steel Wire and increased Rubber topping thickness.

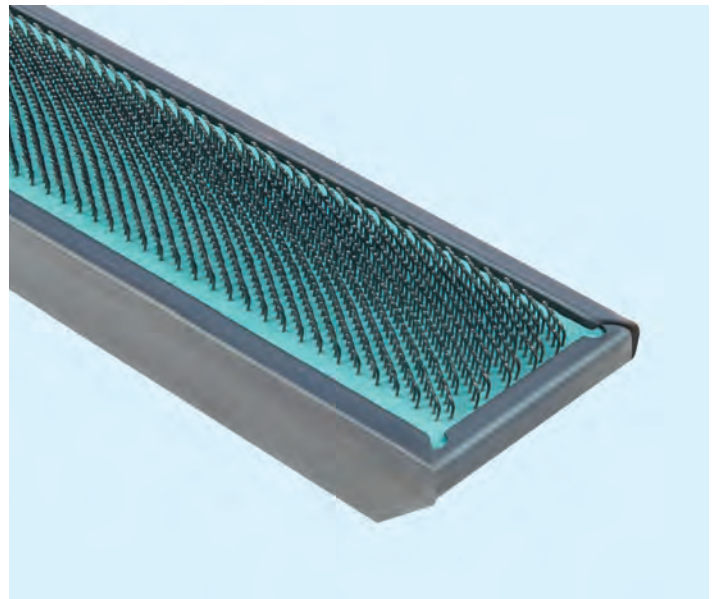


CONTRA FLAT TOPS SPECIFICATIONS

Specifications	Height (mm)	PPSI	Applications
CONTRA 550	7.5	550	Cotton - Medium
CONTRA 600 (40" only)	7.5	600	Cotton - Fine

POTENZA

- Better individualization of fibres, extraction of neps and foreign matter.
- Made of High Tensile Alloy Steel wire and increased Rubber topping thickness.
- Enhanced resilience of pins.

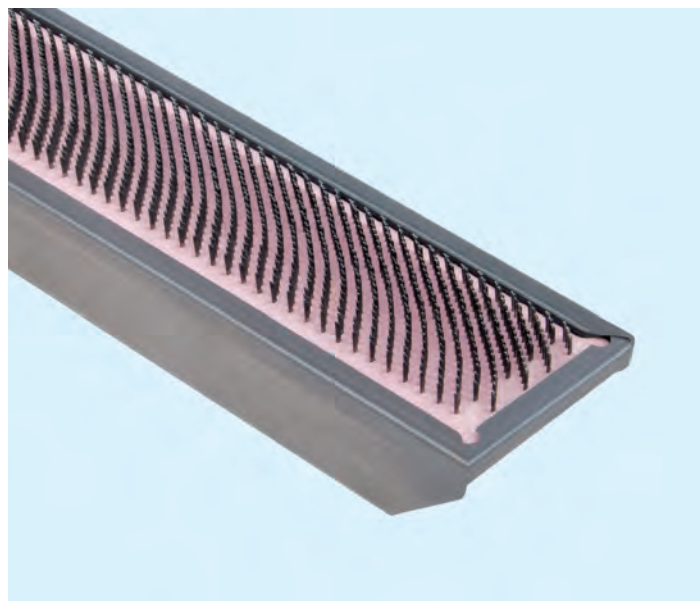


POTENZA FLAT TOPS SPECIFICATIONS

Specifications	Height (mm)	PPSI	Applications
POTENZA 32	8.0	320	Cotton OE and up to Ne 20's
POTENZA 42	7.5	420	Cotton Ne 20's to 40's
POTENZA 52	7.5	520	Cotton Ne 40's and above

CALIBRA

- Does not require regrinding.
- Suitable for processing synthetic and its blends.
- An Infinitely progressive setting pattern for effective opening of fibre tufts.

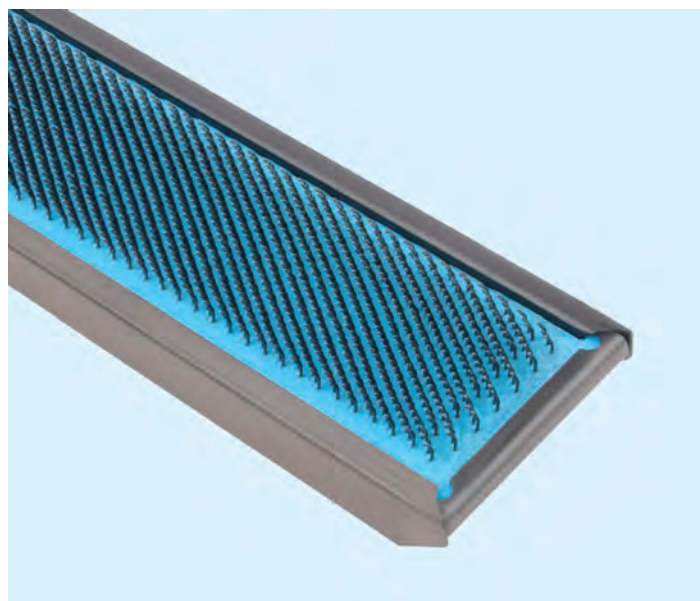


CALIBRA FLAT TOPS SPECIFICATIONS

Specifications	Height (mm)	PPSI	Applications
CALIBRA 32	8.0	240	100 % Polyester 1.5 to 2.0 Dr & Acrylic
CALIBRA 44	8.0	330	100 % Polyester up to 1.5 Dr & Polyester / Viscose Blends (Grey & Dyed)

EVO TOP

- Made of High Tensile Alloy Steel wire.
- Improved surface finish of wire points avoid fibre loading.
- Diagonally arranged points to the fibre flow, ensure better opening of fibre tufts.



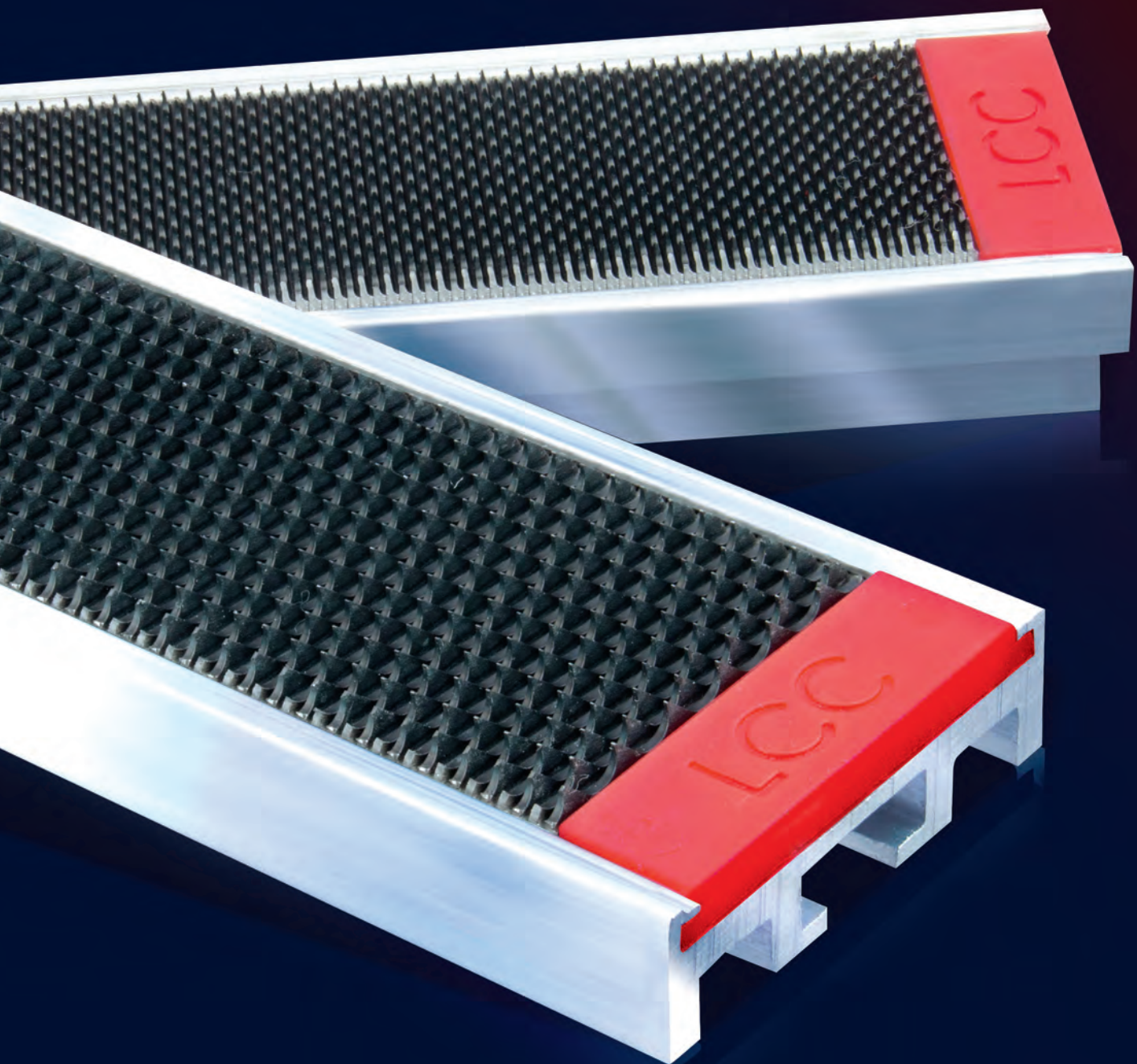
EVO TOP FLAT TOPS SPECIFICATIONS

Specifications	Height (mm)	PPSI	Applications
EVO 300S	8.0	300	100 % Polyester & Polyester / Viscose Blend (Grey) above 1.5 Dr
EVO 300	7.5	300	OE Regenerated Fibre: Polyester/Cotton Blend
EVO 350S	8.0	350	100 % Polyester & Polyester / Viscose Blend (Grey) above 1.5 Dr
EVO 400S	8.0	400	100 % Polyester (Grey) up to 1.5 Dr
EVO 400	7.5	400	OE Regenerated Fibre: Polyester/Cotton Blend, Viscose/Cotton Blend
EVO 450S	8.0	450	100 % Viscose(Rayon) up to 1.5 Dr & Polyester/Viscose & Polyester Cotton Blend
EVO 450	7.5	450	100 % Viscose(Rayon) up to 1.5 Dr & Viscose/Cotton Blend
EVO 500S	8.0	500	Viscose (Rayon) / Cotton Blend

STATIONARY FLAT TOPS

The Ultimate Catalyst for Carding

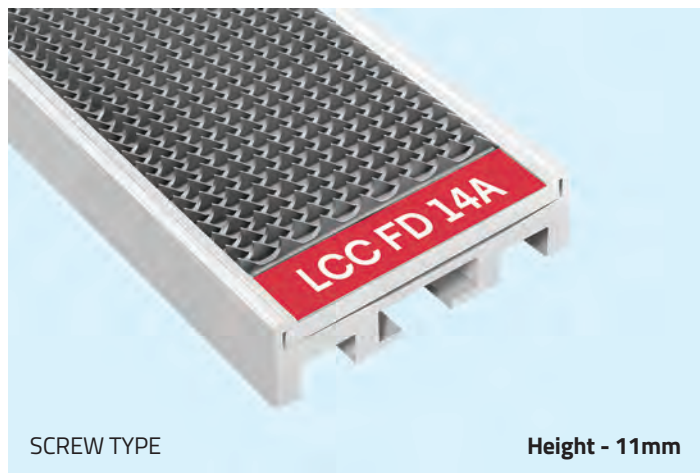
LCC has designed the Stationary Flat Tops edge+ with a unique Nil Trash arrangement (NTA) pattern of wire points to ensure no trash embedment. The special surface finish reduces run-in time and increases life resulting in lesser downtime.



edge +

SCREW TYPE

LC 636 SX, LC 636 S, LC 636, LC 363 S, LC 363, LC 361 S, LC 361, C80, C75, C72, C70, C60, C51, C50, C10, C4, TC 30i, TC 19i, TC 15, TC 11, TC 07, TC 06, TC 05-S, TC 03, DK 903, DK 800, 760, 740 & CRSL MK8, MK7, MK6, MK5/MK4 (Back) MZLI C701, C601, C501, CX400, JWF 1203, 1204, 1211, JSC 26, 328, SC8, FA 221E



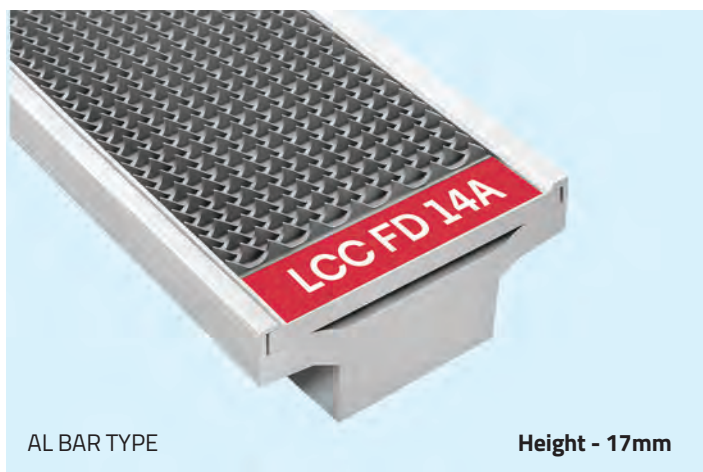
SCREW TYPE

Height - 11mm

SCREW TYPE SPECIFICATIONS

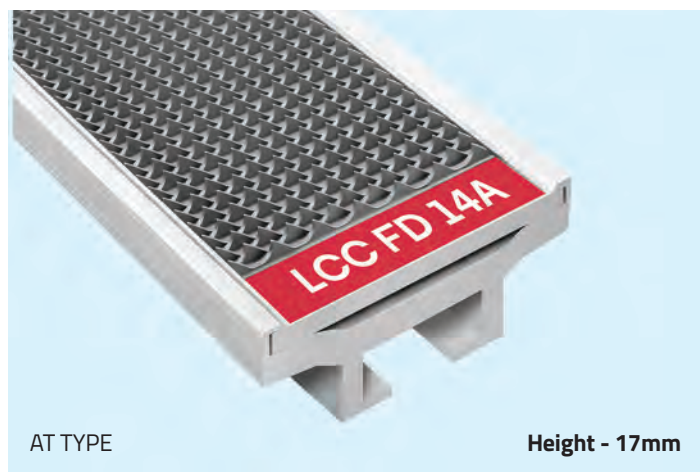
Specifications	FD 6A	FD 9A	FD 14A	FD 24A	FD 24C	FD 32A	FD 42A	FD 42B	FD 54A	FD 55A	FD 62A	FD 64A
PPSI	60	90	140	240	240	320	420	420	540	550	620	640

'AL' BAR TYPE & 'AT' TYPE



AL BAR TYPE

Height - 17mm



AT TYPE

Height - 17mm

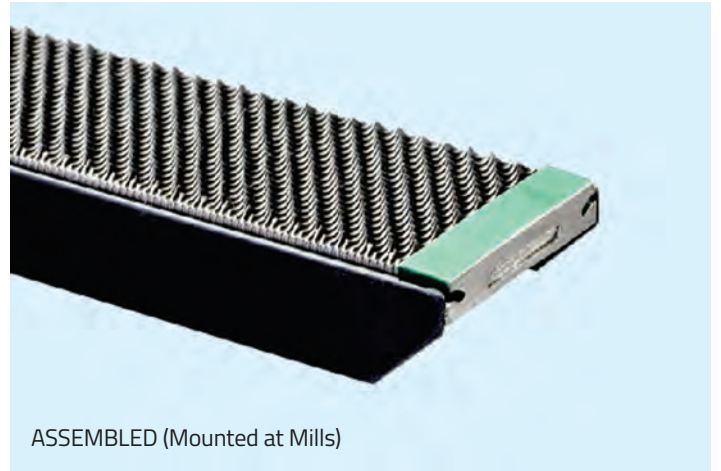
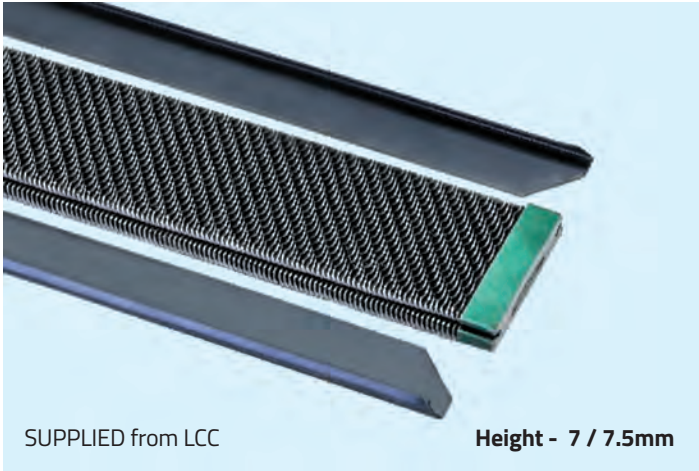
Lakshmi LC 363, LC 361, LC 333, LC 300 A-V3, LC 300 A, C1/3, LCC C-Factor (All Cards) LCC C-MAX (All Cards) & CRSL MK5/MK4 (Front).

Stationary Flat Tops : DK 803, DK 760, Combing Segments - Lakshmi LC 333-3 Lickerin, LC 363, DK 803/903

'AL' BAR TYPE & 'AT' TYPE SPECIFICATIONS

Specifications	FD 9A	FD 14A	FD 24A	FD 32A	FD 42A	FD 54A	FD 55A	FD 62A	FD 64A
PPSI	90	140	240	320	420	540	550	620	640

CLIP TYPE



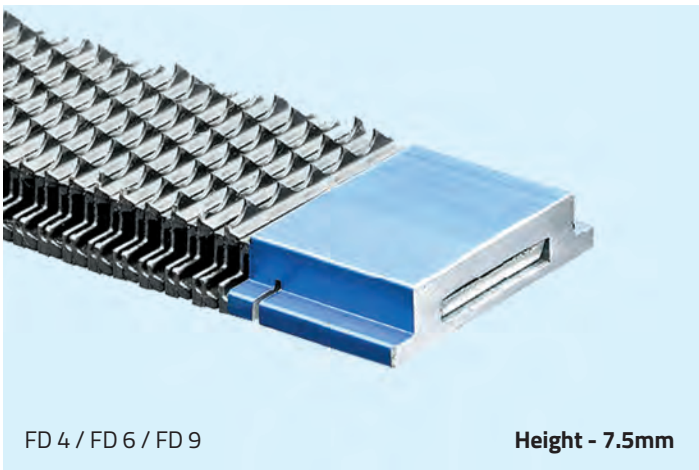
TRTZLR, DK 715, RTR, C4, CRSL MK4, Toyoda, Howa & Old Chinese Cards.

CLIP TYPE SPECIFICATIONS

Specifications	FD 9A	FD 14A	FD 24A	FD 34A	FD 42A	FD 54A	FD 62A
PPSI	90	140	240	340	420	540	620

UNDER LICKERIN - SEGMENT

STRIP TYPE

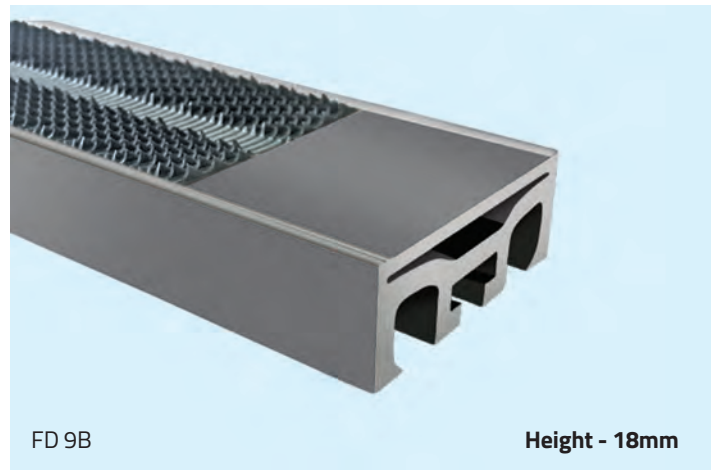


Lakshmi LC 300 A-V3, TRTZLR DK 760, DK 740, RTR C51, C50, C10, C4, LCC Combing Segments (All Cards), JWF 1203, JWF 1211

STRIP TYPE SPECIFICATIONS

Specifications	FD 4	FD 6	FD 9
PPSI	40	60	90

CURVED TYPE

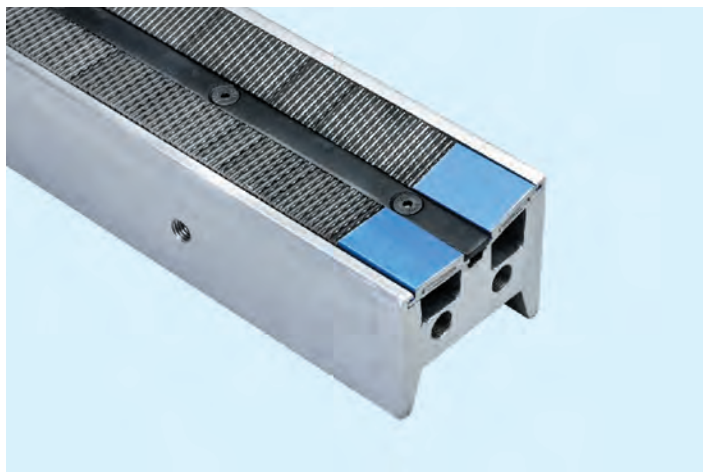


TRTZLR TC 03, TC 05, TC 06, TC 07

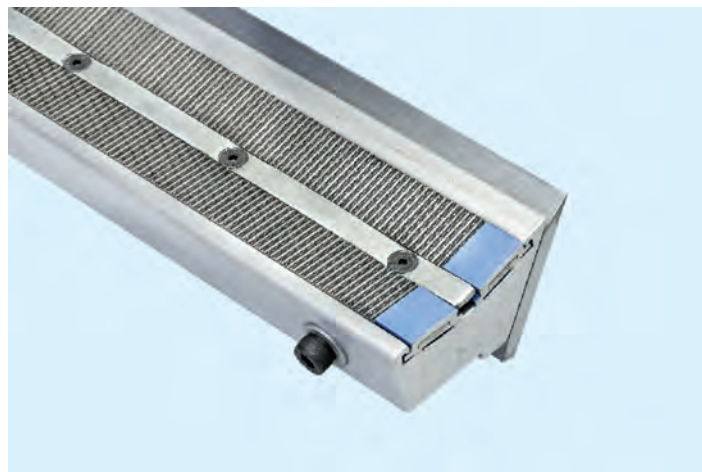
CURVED TYPE SPECIFICATIONS

Specifications	FD 9B
PPSI	90

C-MAX CARDING SYSTEM

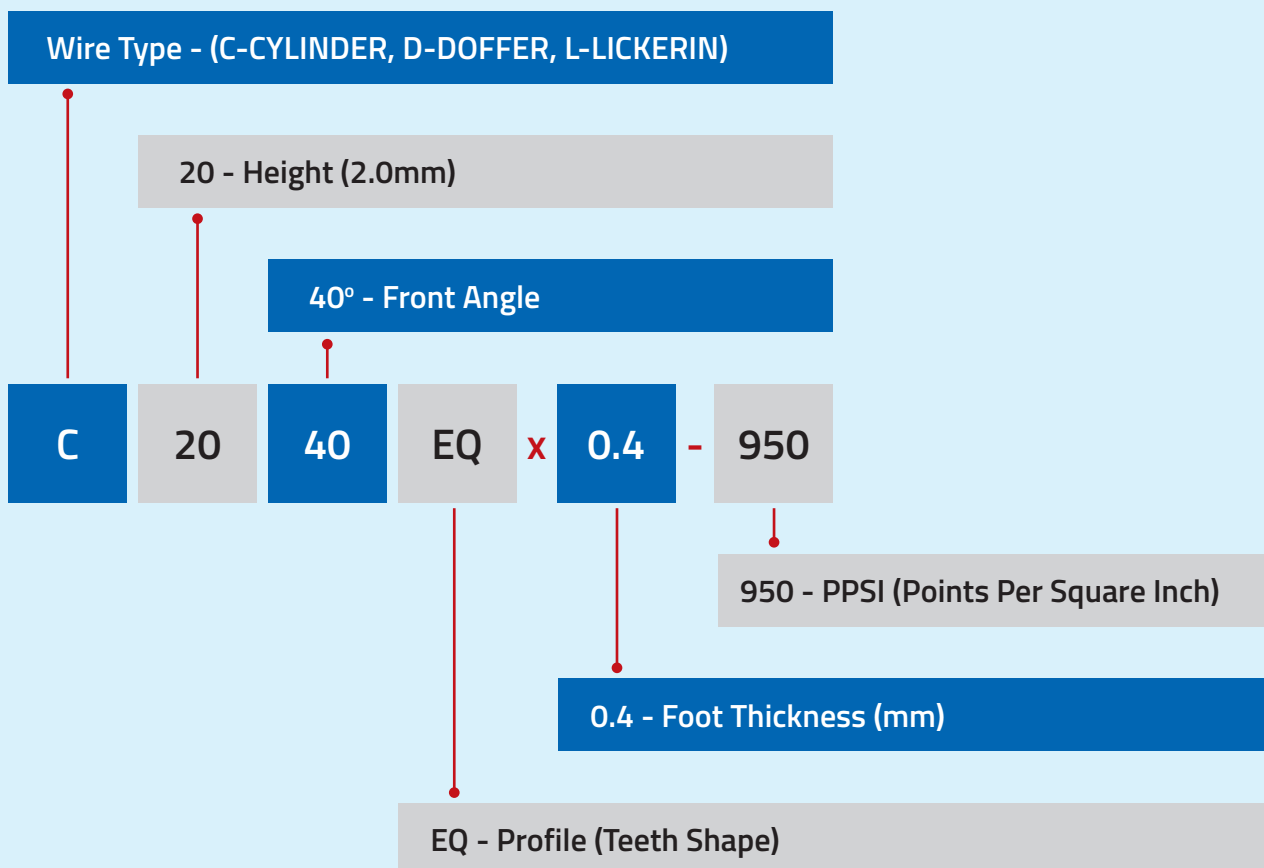


COMBING SEGMENT (1 PC.) FOR TRTZLR DK 740



SEGMENT MK II (2 PCS.) FOR LAKSHMI & RTR C1/3 CARDS

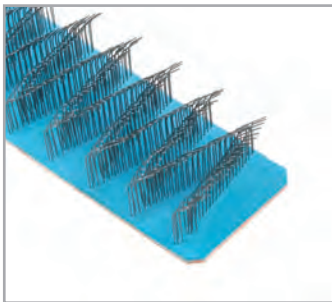
PRODUCT CODIFICATION



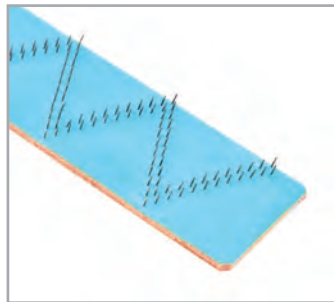
STRIPPING FILLETS

Leading the Way in Flexibility
and Durability

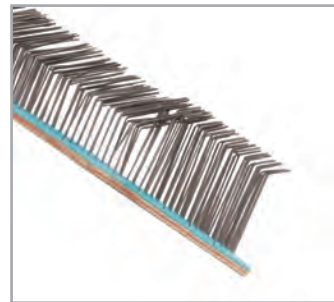
STRIPPING FILLET TYPES



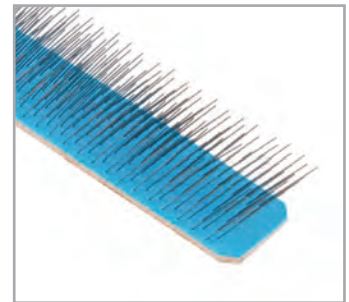
Activa - Z



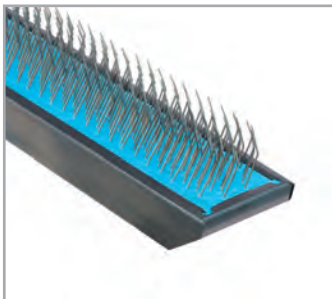
Activa - Z No.10



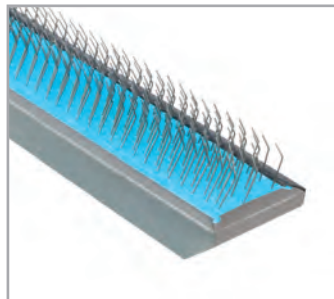
Activa - ST



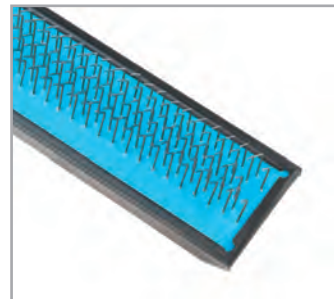
Brush Roller Fillet



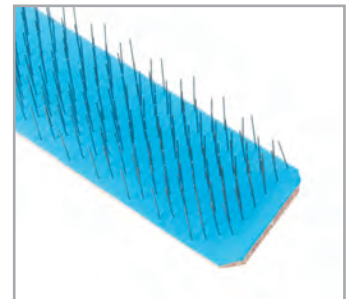
Cleaning Flat Fillet
(10 Rows)



Cleaning Flat Fillet
(8 Rows)



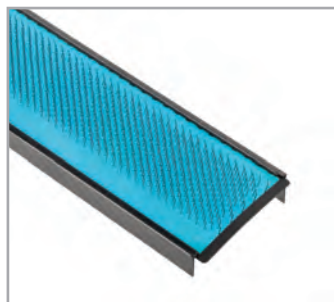
Clearer Rod Clothing



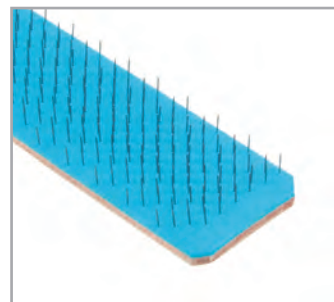
Clearer Roller Clothing



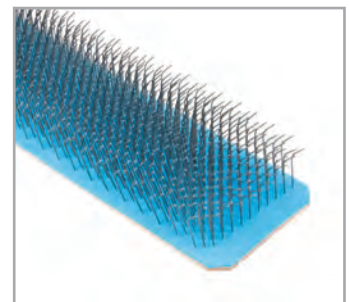
CRC CF 50



CRC with Clips



Special CRC Fillet

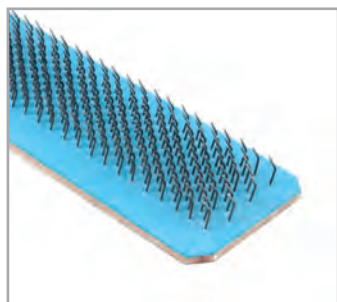


Metastrip

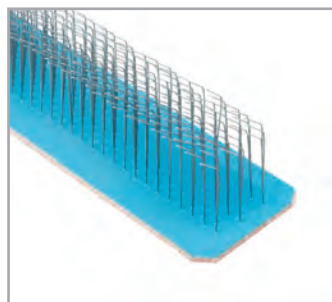
STRIPPING FILLET TYPES



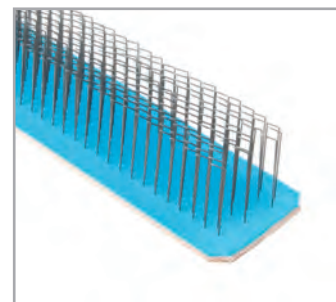
Dicky Fillet
(CRSL MK5)



Fixed Stripper
Fillet (C60)



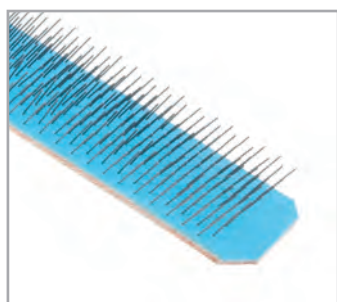
Flat Cleaning
Fillet (C60)



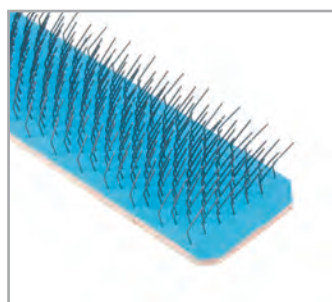
Flat Clearer Roller
Clothing



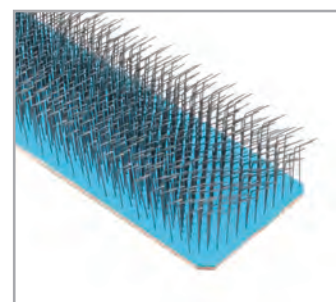
Flat Stripping



TR AP NO.26



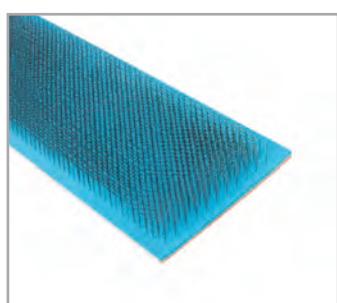
TR DP 18-1



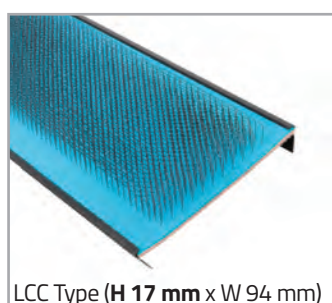
TR DS 609



Hand Card Stripper
with Handle

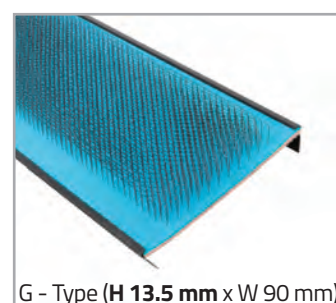


Hand Card
Stripper - Strips
559 x 64 x 17 mm



LCC Type (H 17 mm x W 94 mm)

Hand Card Stripper
with Clips
260 x 64 x 17 mm



G - Type (H 13.5 mm x W 90 mm)

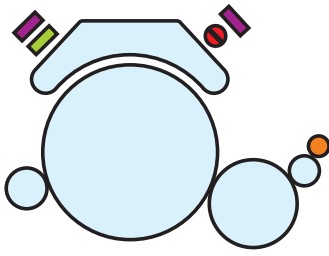
Hand Card Stripper
With Clips
260 x 64 x 13.5 mm

LCC offers a wide range of stripping fillets in various designs for different card models in the market. Stripping fillets are mainly engaged for cleaning flat tops & take-off rollers. It extracts waste and overflowing fibres and transfers to the card suction system.

The flat cleaning fillets penetrate in the flattops clothing until the knee bend and remove the deposits of short fibres and trash particles for effective carding function and thereby reduce the machine downtime.

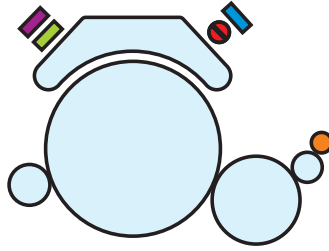
We also supply hand stripping fillets in different designs for manual stripping at critical positions for faster and immediate removal of the accumulated fibres from specific zone.

STRIPPING FILLET POSITIONS



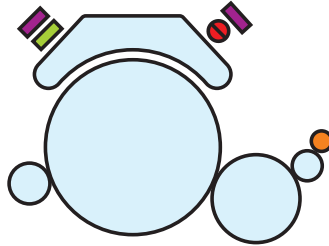
LAKSHMI LC 636SX, LC 636S, LC 636

Fillet	Specifications	Qty / Card
Clearer Rod Clothing	1522 x 15 mm	2 pcs
CRC with Clips	1520 x 58.5 mm	1 pc
Flat Clearer Roller Clothing	1570 x 19 mm	2 pcs
CRC CF 50	23 mtrs x 17.5 mm	23 mtrs



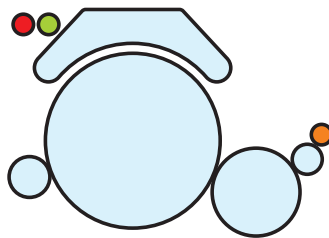
LAKSHMI LC 363S, LC 363, LC 361S, LC 361 & LC 333

Fillet	Specifications	Qty / Card
Clearer Rod Clothing	1020 x 15 mm	1 pc
CRC with Clips	1020 x 58.5 mm	1 pc
Clearer Rod Clothing	1010 x 15 mm	1 pc
Flat Clearer Roller Clothing	1050 x 19 mm	2 pcs
CRC CF 50	15 mtrs x 17.5 mm	15 mtrs



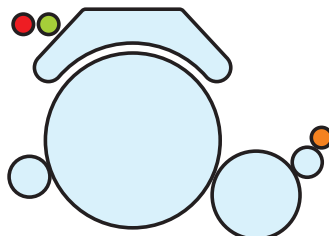
LAKSHMI LC 300 A- V3 / LC 100

Fillet	Specifications	Qty / Card
Clearer Rod Clothing	1010 x 15 mm	2 pcs
CRC with Clips (LC 300A-V3)	1010 x 58.5 mm	1 pc
Flat Stripping (LC 100)	1030 x 32 mm	1 pc
Flat Clearer Roller Clothing	1050 x 19 mm	2 pcs
CRC CF 50 (LC 300A-V3)	15 mtrs x 17.5 mm	15 mtrs
Activa-Z No.10 (LC 100)	8.6 mtrs x 38 mm	8.6 mtrs



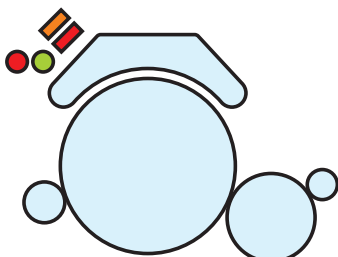
TRTZLR TC11/TC15/TC19i, JWF1213, JSC326 /328, AUTOCARD SC8

Fillet	Specifications	Qty / Card
TR DP 18-1	14 mtrs x 26 mm	14 mtrs
TR DS 609	12 mtrs x 38 mm	12 mtrs
TR AP NO.26	20 mtrs x 16 mm	20 mtrs



TRTZLR (DK 715-TC 07) & JFA 226/JWF 1203-1211

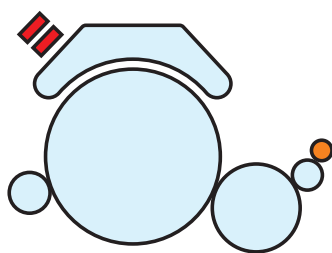
Fillet	Specifications	Qty / Card
TR DP 18-1	10.5 mtrs x 26 mm	10.5 mtrs
TR DS 609	9.0 mtrs x 38 mm	9.0 mtrs
TR AP NO.26	15 mtrs x 16 mm	15 mtrs







RTR C80 / C75 / C72 / C70 / C60

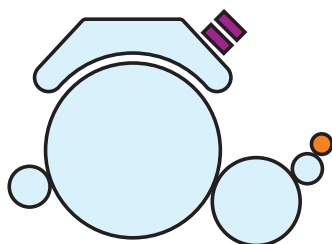
Fillet	Specifications	Qty / Card
TR DP 18-1 (C80/C75/C72/C70)	15 mtrs x 26 mm	15 mtrs
TR DS 609 (C80/C75/C72/C70)	14 mtrs x 38 mm	14 mtrs
Fixed Stripper Fillet (C60)	1545 x 35 mm	1pc
Flat Cleaning Fillet (C60)	1545 x 35 mm	1pc

STRIPPING FILLET POSITIONS





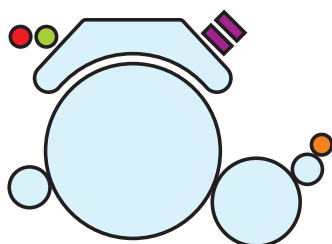
RTR C 51 / C 50 / C 10 / C 4

Fillet	Specifications	Qty / Card
 Flat Stripping	1030 x 32 mm	2 pcs
 Brush Roller Fillet (C 51 / C 50 / C 10)	13 mtrs x 17.5 mm	13 mtrs
 Special CRC - C4	12 mtrs x 28 mm	12 mtrs
 Activa-Z No.10	7.5 mtrs x 38 mm	7.5 mtrs







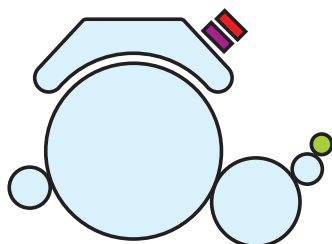
CRSL MK 8

Fillet	Specifications	Qty / Card
 Dicky Fillet	20 mtrs x 19 mm	20 mtrs
 Cleaning Flat Fillet (10 rows)	1250 x 32.5 mm	2 pcs






CRSL MK 6 & MK 7

Fillet	Specifications	Qty / Card
 TR DP 18-1	12.5 mtrs x 26 mm	12.5 mtrs
 TR DS 609	11 mtrs x 38 mm	11 mtrs
 Dicky Fillet	16 mtrs x 19 mm	16 mtrs
 Cleaning Flat Fillet (10 rows)	1022 x 32.5 mm	2 pcs



CRSL MK 4 & MK 5

Fillet	Specifications	Qty / Card
 Cleaning Flat Fillet (8 rows)	1022 x 32.5 mm	1 pc
 Cleaning Flat Fillet (10 rows)	1022 x 32.5 mm	1 pc
 Dicky Fillet (CRSL MK5)	16 mtrs x 19 mm	16 mtrs

GENERAL APPLICATIONS - STRIPPING FILLETS

Purpose	Fillet	Specifications
Flat Cleaning	Activa - Z	34.5 mtrs x 38 mm 13.5 mtrs x 38 mm 11.5 mtrs x 38 mm
Flat Cleaning	Activa - ST	50.0 mtrs x 26 mm 16.5 mtrs x 26 mm
Metallic Wire Stripping	Metastrip	40.0 mtrs x 38 mm 13.5 mtrs x 38 mm
Hand Card Stripper - Reclothing Strips	Hand Card Stripper with Clips (17mm Height x 92mm Width) - LCC Type	260 x 64 x 17 mm
Hand Card Stripper - Reclothing Strips	Hand Card Stripper with Clips (13.5mm Height x 90mm Width) - G Type	260 x 64 x 13.5 mm
Hand Card Stripper - Reclothing Strips	Hand Card Stripper - Strip (17mm Height x 92mm Width)	559 x 64 x 17 mm
Hand Card Stripper with Handle	Hand Card Stripper with Clips (17mm Height x 92mm Width)	260 x 64 x 17 mm
Hand Card Stripper with Handle	Hand Card Stripper with Clips (13.5mm Height x 90mm Width)	260 x 64 x 13.5 mm

CARD CLOTHING - RECOMMENDATION CHART

COTTON APPLICATIONS

	Open End Up to 20s Ne - Waste Mixing			Ring Yarn / Open End Coarse Up to 30s Ne		
	Below 30 Kgs/Hr	30-60 Kgs/Hr	Above 60 Kgs/Hr	Below 30 Kgs/Hr	30-60 Kgs/Hr	Above 60 Kgs/Hr
Cylinder Wire	C 2530 x 0.6 - 720 C 2030 x 0.6 - 720	C 2030 x 0.6 - 720 C 2040EQ x 0.45 - 850	C 2040EQ x 0.45 - 850 C 2040EQ x 0.40 - 950	C 2030 x 0.5 - 863	C 2040EQ x 0.45 - 850 C 2040EQ x 0.4 - 950	C 2040EQ x 0.4 - 950
Doffer Wire	D 4030Q x 0.9 - 367 D 4030E x 0.8 - 381	D 4030Q x 0.9 - 367 D 4030E x 0.8 - 381	D 4030Q x 0.9 - 367 D 4030E x 0.8 - 381	D 4030Q x 0.9 - 367 D 4030E x 0.8 - 381	D 4030Q x 0.9 - 367 D 4030E x 0.8 - 381	D 4030Q x 0.9 - 367 D 4030E x 0.8 - 381
Flat Tops	Potenza 42 Evolv 2X 420	Evolv 2X 420 Evolv 2X 490	Evolv 2X 420 Evolv 2X 490	Potenza 42 Evolv 2x 490	Evolv 2X 490 Evolv 2X 550	Evolv 2X 490 Evolv 2X 550
Lickerin Wire	L 5010 x 8VG - 40 L 5510 x 1.20 - 40	L 5010 x 8VG - 40 L 5510 x 1.20 - 40	L 5010 x 8VG - 40 L 5510 x 1.20 - 40	L 5010 x 8VG - 40 L 5510 x 1.20 - 40	L 5010 x 8VG - 40 L 5510 x 1.20 - 40	L 5010 x 8VG - 40 L 5510 x 1.20 - 40
Segment	FD6	FD6	FD6	FD6	FD6	FD6
Stationary Flat Tops	FD 9A / FD 14A / FD 24A	FD 9A / FD 14A / FD 24A	FD 9A / FD 14A / FD 24A	FD 14A / FD 24A / FD 32A	FD 14A / FD 24A / FD 32A	FD 14A / FD 24A / FD 32A
Front Zone	FD 55A / FD 64A	FD 55A / FD 64A	FD 55A / FD 64A	FD 55A / FD 64A	FD 55A / FD 64A	FD 55A / FD 64A
	Ring Yarn Medium 30s-60s Ne			Ring Yarn Fine 60s Ne & Above		
Cylinder Wire	C 2030 x 0.5 - 863	C 2040EQ x 0.4 - 950	C 2040EQ x 0.4 - 950	C 2030 x 0.5 - 990	C 2040EQ x 0.4 - 950 C 2030 x 0.5 - 990	C 2040EQ x 0.4 - 950
Doffer Wire	D 4030Q x 0.9 - 367 D 4030E x 0.8 - 381	D 4030Q x 0.9 - 367 D 4030E x 0.8 - 381	D 4030Q x 0.9 - 367 D 4030E x 0.8 - 381	D 4030Q x 0.9 - 367 D 4030E x 0.8 - 381	D 4030Q x 0.9 - 367 D 4030E x 0.8 - 381	D 4030Q x 0.9 - 367 D 4030E x 0.8 - 381
Flat Tops	Potenza 52	Evolv 2X 550	Evolv 2X 550	Potenza 52 Evolv 2x 550	Evolv 2X 550 Evolv 2X 600/740	Evolv 2X 550/600 Evolv 2X 740
Lickerin Wire	L 5010 x 8VG - 40 L 5510 x 1.20 - 40	L 5010 x 8VG - 40 L 5510 x 1.20 - 40	L 5010 x 8VG - 40 L 5510 x 1.20 - 40	L 5010 x 8VG - 40 L 5510 x 1.20 - 40	L 5010 x 8VG - 40 L 5510 x 1.20 - 40	L 5010 x 8VG - 40 L 5510 x 1.20 - 40
Segment	FD6	FD6	FD6	FD6	FD6	FD6
Stationary Flat Tops	FD 14A / FD 24A / FD 32A	FD 14A / FD 24A / FD 32A	FD 14A / FD 24A / FD 32A	FD 14A / FD 24A / FD 32A	FD 14A / FD 24A / FD 32A	FD 14A / FD 24A / FD 32A
Front Zone	FD 64A	FD 64A	FD 64A	FD 64A	FD 64A	FD 64A

Note : The above recommendations are guidelines only. For specific application, please consult us.

CARD CLOTHING - RECOMMENDATION CHART

MAN MADE FIBRE APPLICATIONS

		100% Polyester			Polyester / Viscose (T/R)		
		Below 30 Kgs/Hr	30-60 Kgs/Hr	Above 60 Kgs/Hr	Below 30 Kgs/Hr	30-60 Kgs/Hr	Above 60 Kgs/Hr
Cylinder Wire		C 2520 x 0.7 - 616 C 2525 x 0.6 - 720	C 2520 x 0.7 - 616 C 2525 x 0.6 - 720	C 2520 x 0.7 - 616 C 2525 x 0.6 - 720	C 2520 x 0.6 - 720 C 2525 x 0.5 - 760	C 2525 x 0.6 - 720 C 2525 x 0.5 - 760	C 2525 x 0.6 - 720 C 2525 x 0.5 - 760
Doffer Wire		D 4030Q x 0.9R - 367	D 4030Q x 0.9R - 367	D 4030Q x 0.9R - 367	D 4030Q x 0.9R - 367	D 4030Q x 0.9R - 367	D 4030Q x 0.9R - 367
Flat Tops		Calibra 44 EVO 3505	EVO 3505 EVO 4005	EVO 4005	EVO 4005 EVO 4505	EVO 4005 EVO 4505	EVO 4005 EVO 4505
Lickerin Wire		L 5005 x 8VG - 32 L 5505 x 1.20 - 32	L 5005 x 8VG - 32 L 5505 x 1.20 - 32	L 5005 x 8VG - 32 L 5505 x 1.20 - 32	L 5005 x 8VG - 40 L 5505 x 1.20 - 40	L 5005 x 8VG - 40 L 5505 x 1.20 - 40	L 5005 x 8VG - 40 L 5505 x 1.20 - 40
	Segment	FD6	FD6	FD6	FD6	FD6	FD6
	Back Zone	FD 9A / FD 14A / 24A	FD 9A / FD 14A / FD 24A	FD 9A / FD 14A / FD 24A	FD 14A / FD 24A / FD 32A	FD 14A / FD 24A / FD 32A	FD 14A / FD 24A / FD 32A
	Front Zone	FD 42A / FD 55A	FD 42A / FD 55A	FD 42A / FD 55A	FD 55A / FD 64A	FD 55A / FD 64A	FD 55A / FD 64A
		100% Viscose (100% Rayon)			Polyester / Cotton (P/C, T/C), CVC		
		Below 30 Kgs/Hr	30-60 Kgs/Hr	Above 60 Kgs/Hr	Below 30 Kgs/Hr	30-60 Kgs/Hr	Above 60 Kgs/Hr
Cylinder Wire		C 2525 x 0.6 - 720 C 2525 x 0.5 - 812	C 2025E x 0.5 - 812 C 2030EQ x 0.45 - 850	C 2025E x 0.5 - 812 C 2030EQ x 0.45 - 850	C 2525 x 0.6 - 720 C 2525 x 0.5 - 760	C 2025E x 0.5 - 812 C 2030EQ x 0.45 - 850	C 2525 x 0.5 - 760 C 2030EQ x 0.45 - 850
Doffer Wire		D 4030Q x 0.9R - 367	D 4030Q x 0.9R - 367	D 4030Q x 0.9R - 367	D 4030Q x 0.9R - 367	D 4030Q x 0.9R - 367	D 4030Q x 0.9R - 367
Flat Tops		EVO 4505	EVO 4505 EVOL 2X 4905	EVO 4505 EVOL 2X 4905	EVO 4505	EVO 4505	EVO 4505
Lickerin Wire		L 5005 x 8VG - 40 L 5505 x 1.20 - 40	L 5005 x 8VG - 40 L 5505 x 1.20 - 40	L 5005 x 8VG - 40 L 5505 x 1.20 - 40	L 5005 x 8VG - 40 L 5505 x 1.20 - 40	L 5005 x 8VG - 40 L 5505 x 1.20 - 40	L 5005 x 8VG - 40 L 5505 x 1.20 - 40
	Segment	FD6	FD6	FD6	FD6	FD6	FD6
	Back Zone	FD 9A / FD 14A / FD 24A	FD 9A / FD 14A / FD 24A / FD 32A	FD 9A / FD 14A / FD 24A / FD 32A	FD 9A / FD 14A / FD 24A	FD 9A / FD 14A / FD 24A / FD 32A	FD 9A / FD 14A / FD 24A / FD 32A
	Front Zone	FD 42A / FD 55A	FD 42A / FD 55A	FD 55A	FD 55A / FD 64A	FD 55A / FD 64A	FD 55A / FD 64A

Note : The above recommendations are guidelines only. For specific application, please consult us.



LAKSHMI CARD CLOTHING MFG CO. PVT. LTD.

1089, Lakshmi Plaza, Avinashi Road, Coimbatore - 641 037, INDIA.

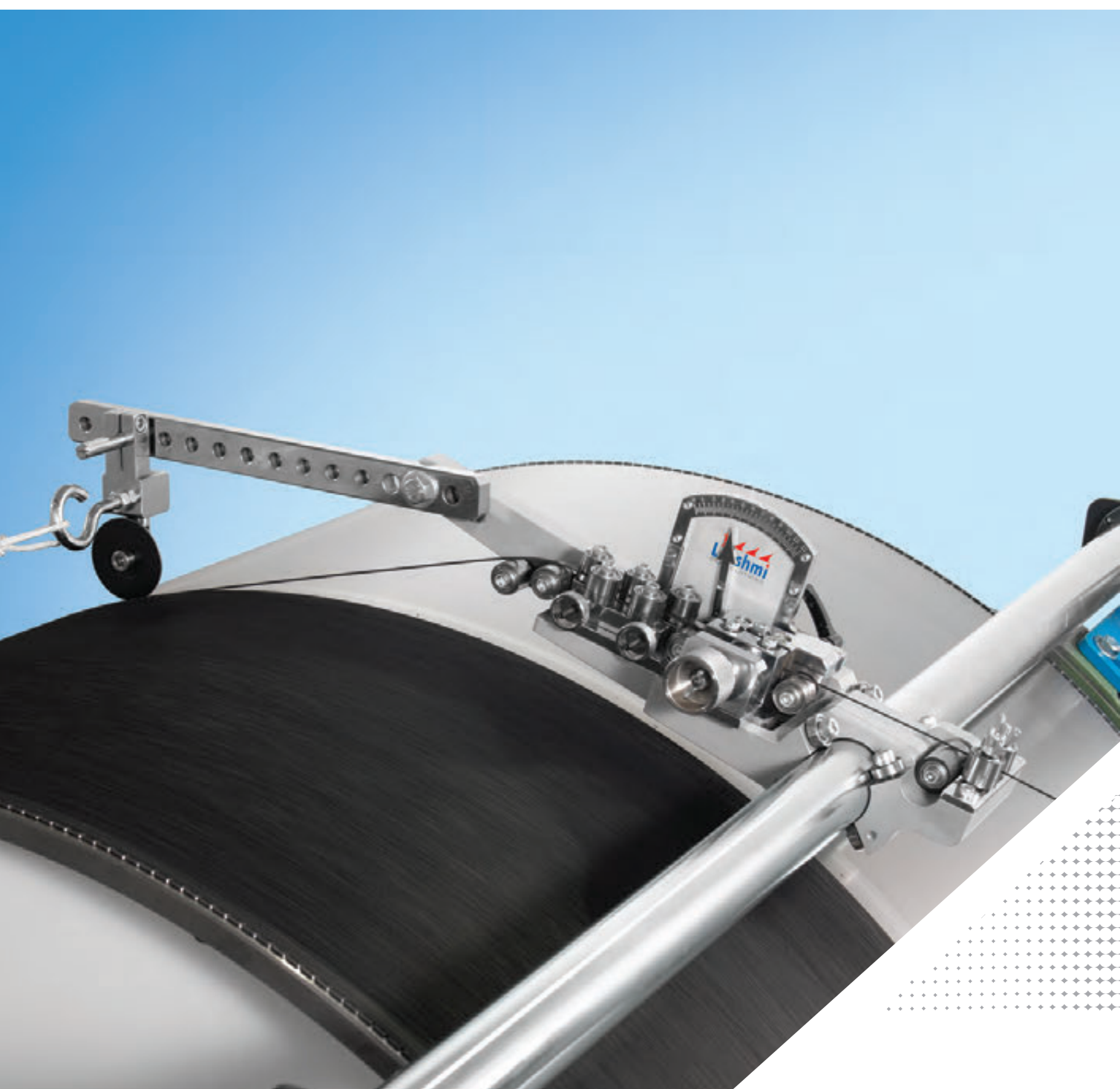
Tel : +91 422 2240205 - 9, Fax : +91 422 2246694,

Email : exports@lakshmicardclothing.co.in

lakscardexport@lakshmicardclothing.com

Website : www.lakshmicardclothing.com





EXPLORE THE
FINEST IN
**CARD
SERVICE
MACHINES**



Lakshmi Card Clothing Mfg. Co. Pvt. Ltd. (LCC) was established in 1960 with Technical collaboration from a renowned Swiss company.

LCC is a part of the esteemed 'HOUSE OF LAKSHMI,' which is among the few vertically integrated textile groups worldwide. This textile conglomerate encompasses textile mills, textile machinery, and accessories manufacturing units. LCC holds the distinction of being one of the largest producer of Metallic Card Clothing and Card Service Machines. This achievement is made possible through consistent market research, product innovation, and a proactive approach in adopting new technologies.

At LCC, we contribute to the value chain at every stage, starting from sourcing high quality raw materials for manufacturing, quality assurance, efficient sales management, and prompt after-sales service. We are an ISO 9001 certified company, which recognizes our expertise in designing, manufacturing, supplying, and providing after-sales service for Card Clothing and Card Service Machines. We are honoured to be an original equipment supplier for Lakshmi Machine Works, one of the leading Card manufacturer.

The driving force behind our continual advancement in cutting-edge technology and cost-effective solutions is our strong customer-oriented research and development. At LCC, our primary goal is to achieve total customer satisfaction at every stage of operation.

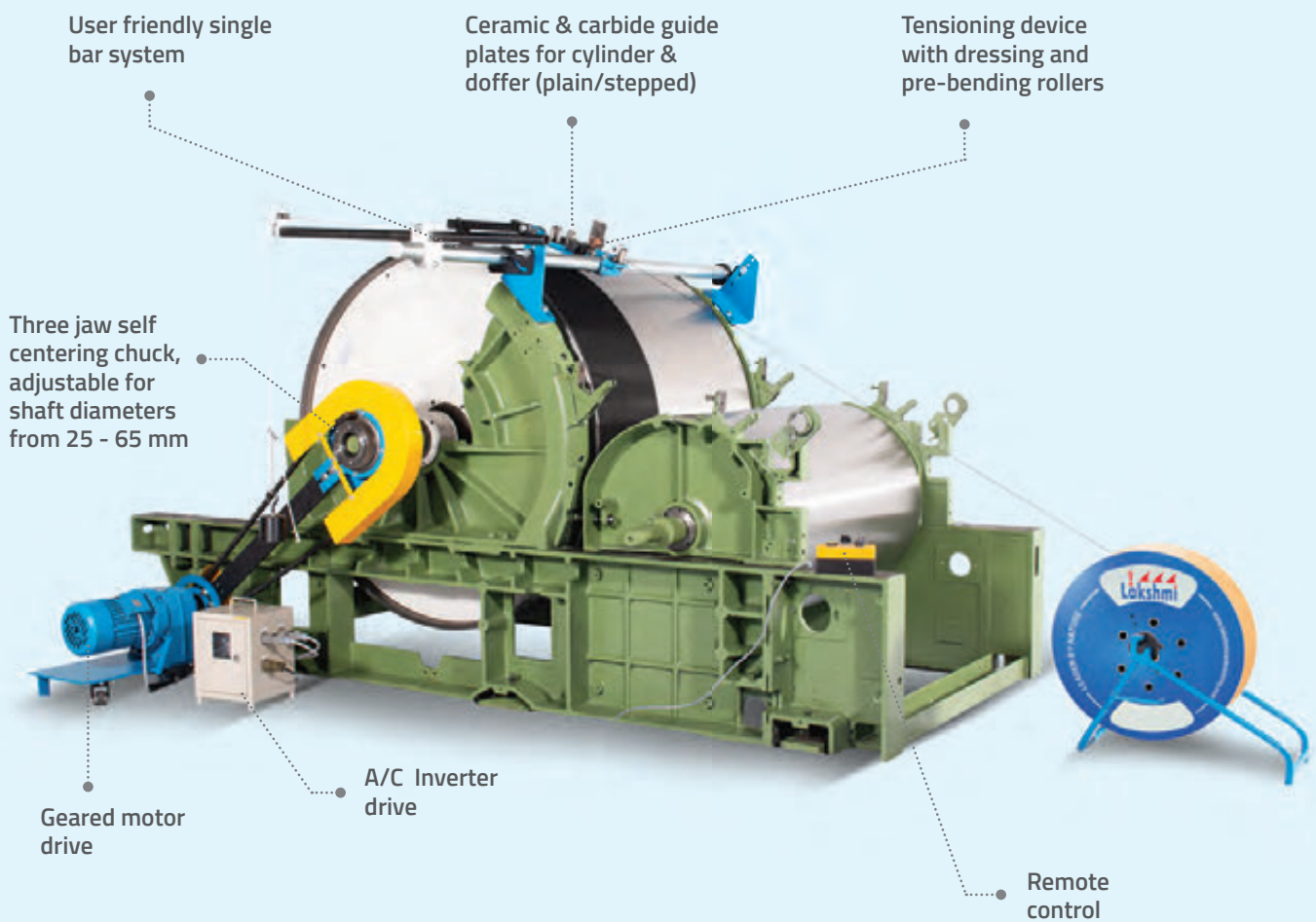




ENHANCE
YOUR CARDING
PRODUCTION TO
NEW HEIGHTS **WITH**
OUR CUTTING-EDGE
CARD SERVICE
MACHINES

METALLIC WIRE MOUNTING EQUIPMENT

CONSTRUCTION



VERSATILE
EFFICIENT
PRECISE

FEATURES

- Ideally suited for mounting all types of cylinder and doffer wires.
- A.C. inverter drive with remote control.
- Brackets for various cards.
- Option to mount 40", 51", 54" & 60" width cards.

SPECIFICATIONS

Motor rating	: Three Phase, 1.5 hp, 1400 rpm
Working width	: 40", 51", 54" & 60"
Tension device calibration	: 0 - 12 kgs
Variable cylinder & doffer mounting speed	: 0 - 45 rpm

COMPONENTS



Cylinder / Doffer Mounting



Portable Drive Unit with Inverter and Remote Control



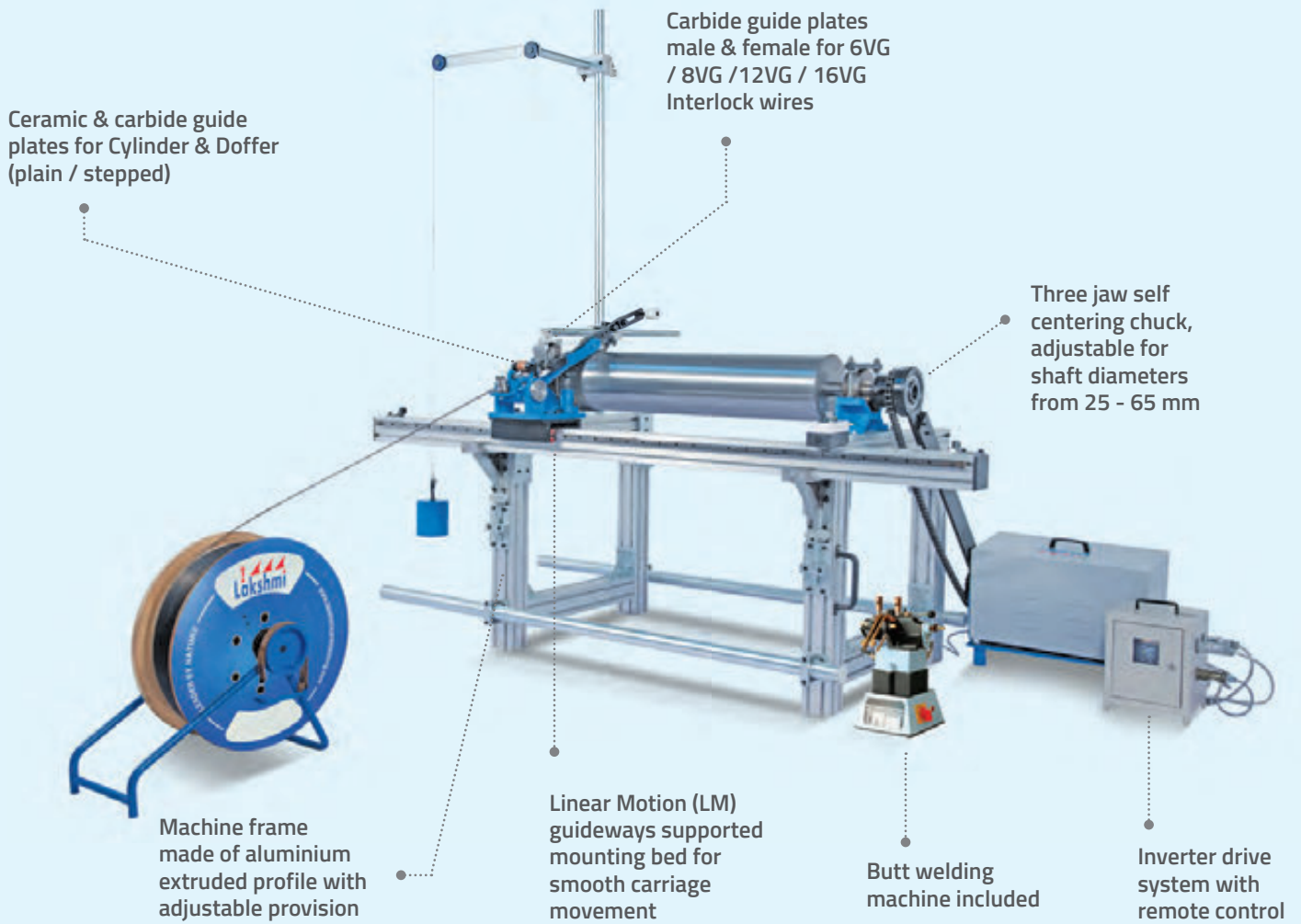
Counter Weight & Fixing Brackets



Butt Welding Machine Included

MULTI ROLLER MOUNTING MACHINE

CONSTRUCTION



Grooved Lickerin Mounting



Interlock Lickerin Mounting



Stripping Fillet Mounting

EASY OPERATION
EFFECTIVE
ADJUSTABLE

FEATURES

- Any roller upto 1600 mm length & 20" diameter can be mounted.
- Can be utilised for mounting of :
 - Cylinder and doffer of all make of cards (40", 51", 54" & 60")
 - Lickerin rollers (grooved & interlock types).
 - Blowroom beaters (grooved & interlock types).
 - Feed rollers and stripper rollers.
 - Stripping fillets and emery fillets.
- Easy to operate.

SPECIFICATIONS

Motor rating : Three phase, 1.5 hp, 1400 rpm
Effective working width : 1600 mm

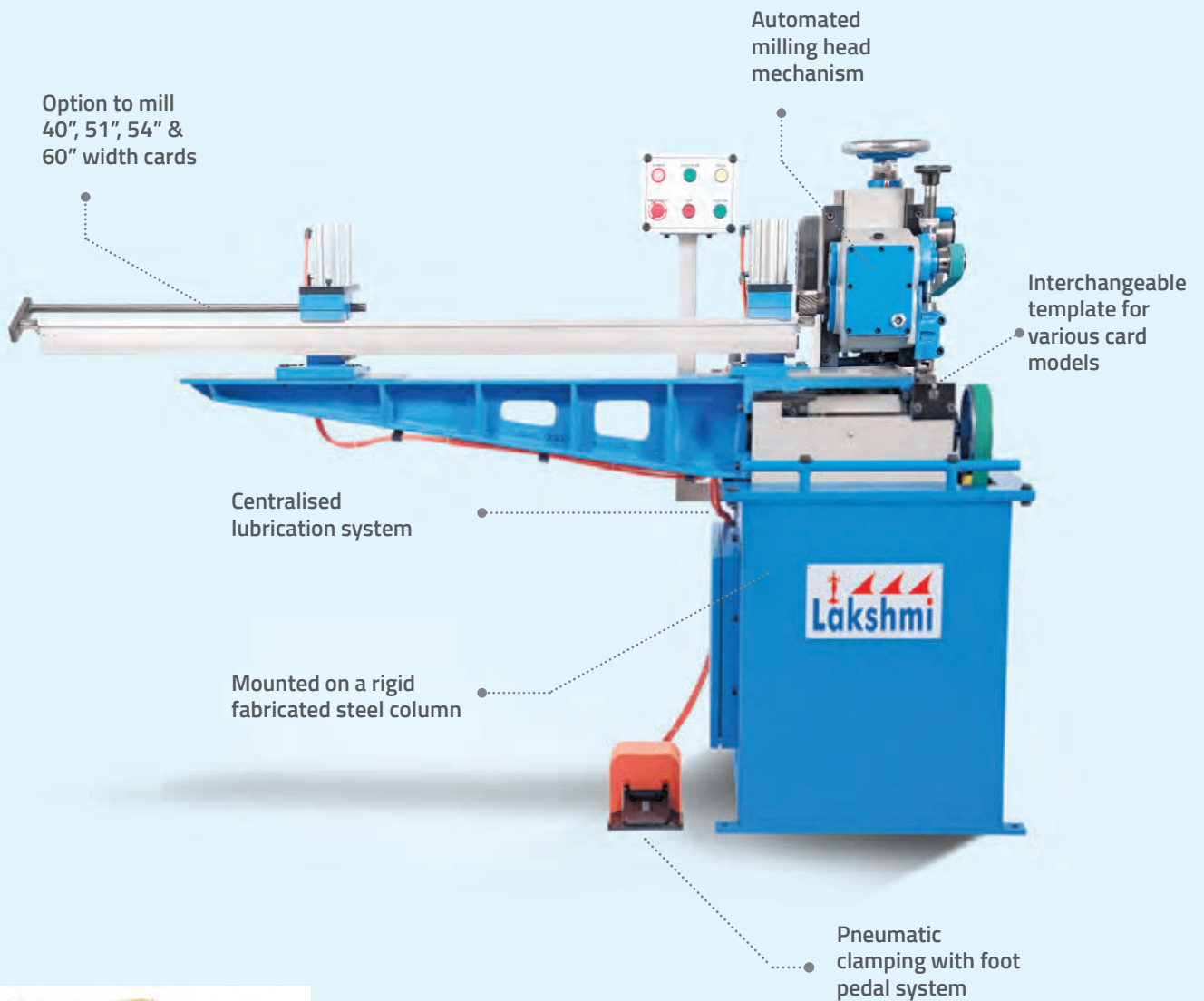
COMPONENTS



Cylinder / Doffer Mounting Machine Included

FLAT END MILLING MACHINE

CONSTRUCTION



Inspection Fixture with Stand

SIMPLE
ACCURATE
AUTOMATIC

FEATURES

- Easily interchangeable template to achieve required milling angle.
- Simple clamping system.
- Accurate milling of flats.
- Fully automatic milling cycle.
- Supply inclusive of inspection fixture assembly with stand (0.01mm dial gauge).

SPECIFICATIONS

Motor rating (Cutter) : Three phase, 1.5 hp, 1410 rpm

Carriage drive motor : 1 hp, 1400 rpm

SPINDLE SPEED

ALL CAST IRON FLATS : 250 rpm (HSS cutter - 0.5 mm land)

RTR C4 / C50 / C51 : 500 rpm (Carbide cutter)

RTR C60 / C70 FLATS : 500 rpm (HSS cutter - 0.5 mm land)

LMW LC361 / 363 FLATS : 1500 rpm (HSS cutter - 0.2 mm land)

COMPONENTS



Lakshmi LC 636/363/361 Milling



Cast Iron Flat Milling



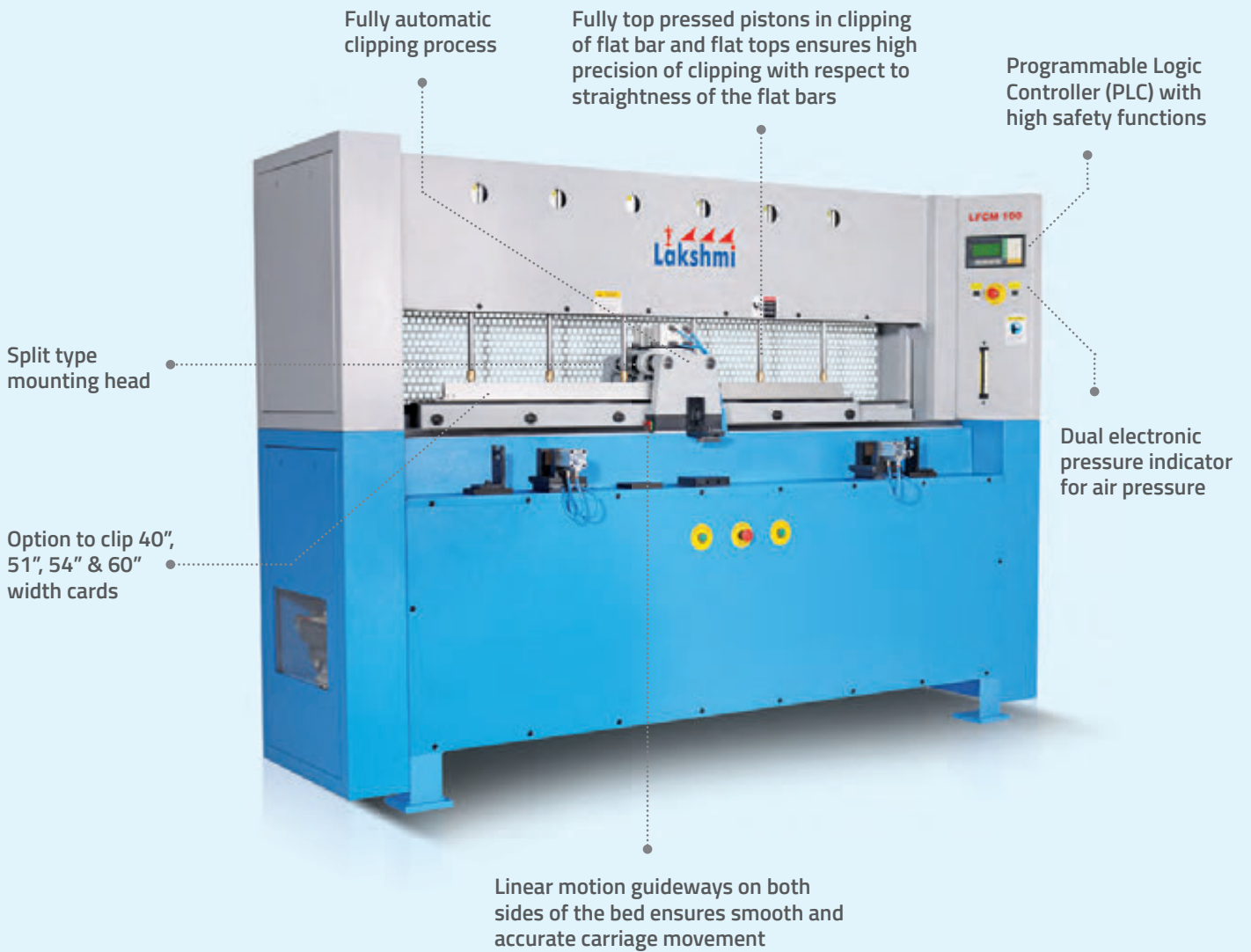
RTR C60/C70/75 Milling



Interchangeable Milling Templates for Different Cards

LAKSHMI FLAT CLIPPING MACHINE LFCM 100 & LFCM 40

CONSTRUCTION



60" - 51" Flat Clipping



60" - 40" Flat Clipping



Inspection Fixture with Stand

ROBUST
PRECISE
SAFE

FEATURES

- "Continuous and constant top pressing" ensures perfect assembling of flat tops clothing on the bare flat.
- "Linear guide ways" at both sides of the bed, ensures smooth carriage movement and high accuracy.
- Light curtains sensors are engaged to stop the machine immediately upon any interference for human safety.
- Ball screw rod with encoder, ensures accurate clipping distance.
- Quick setup time for different make of flats by PLC and MMI display.
- Specially designed stripping wedge for fast Flat De-Clipping.

SPECIFICATIONS

Motor rating (Brake motor)	: Three phase, 1.5 hp, 960 rpm
Effective working width	: 40", 51", 54" & 60"
Pneumatic system air pressure	: 4 to 6 bar

COMPONENTS



Split Type - "TOP PRESSED"



Pre-bending & Form Rollers



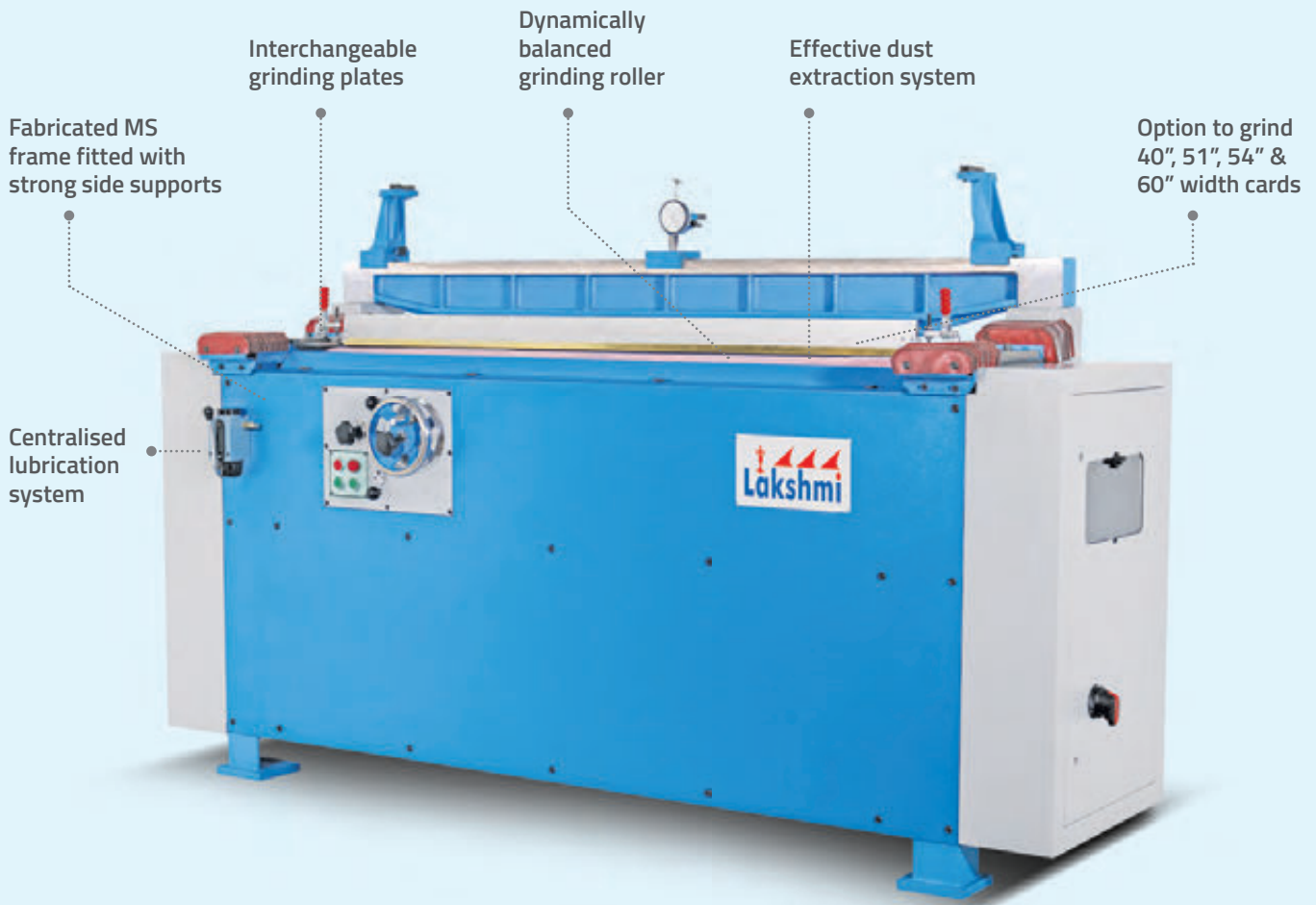
Linear Motion Guideways



De-Clipping Attachment

LAKSHMI FLAT GRINDING MACHINE LFGM 60 & LFGM 40

CONSTRUCTION



STRONG
ADAPTABLE
ACCURATE

FEATURES

- Single flat grinding for high accuracy.
- Accurate and burr free grinding of flats.
- Automatic feeding mechanism for the roller.
- Supply inclusive of inspection fixture assembly with stand (0.01 mm dial guage).
- Provision to use 40" flats on LFGM 60 with 60" - 40" conversion.
- Provision to use 51" flats on LFGM 60 with 60" - 51" conversion.
- Provision to use 54" flats on LFGM 60 with 60" - 54" conversion.

SPECIFICATIONS

Drive motor	: Three phase, 1.5 hp, 1400 rpm
Dust extraction	: 0.8 hp, 2880 rpm
For flat width	: 40", 51", 54" & 60"
Grinding roller options	: Ceramic stone (or) emery fillet

COMPONENTS



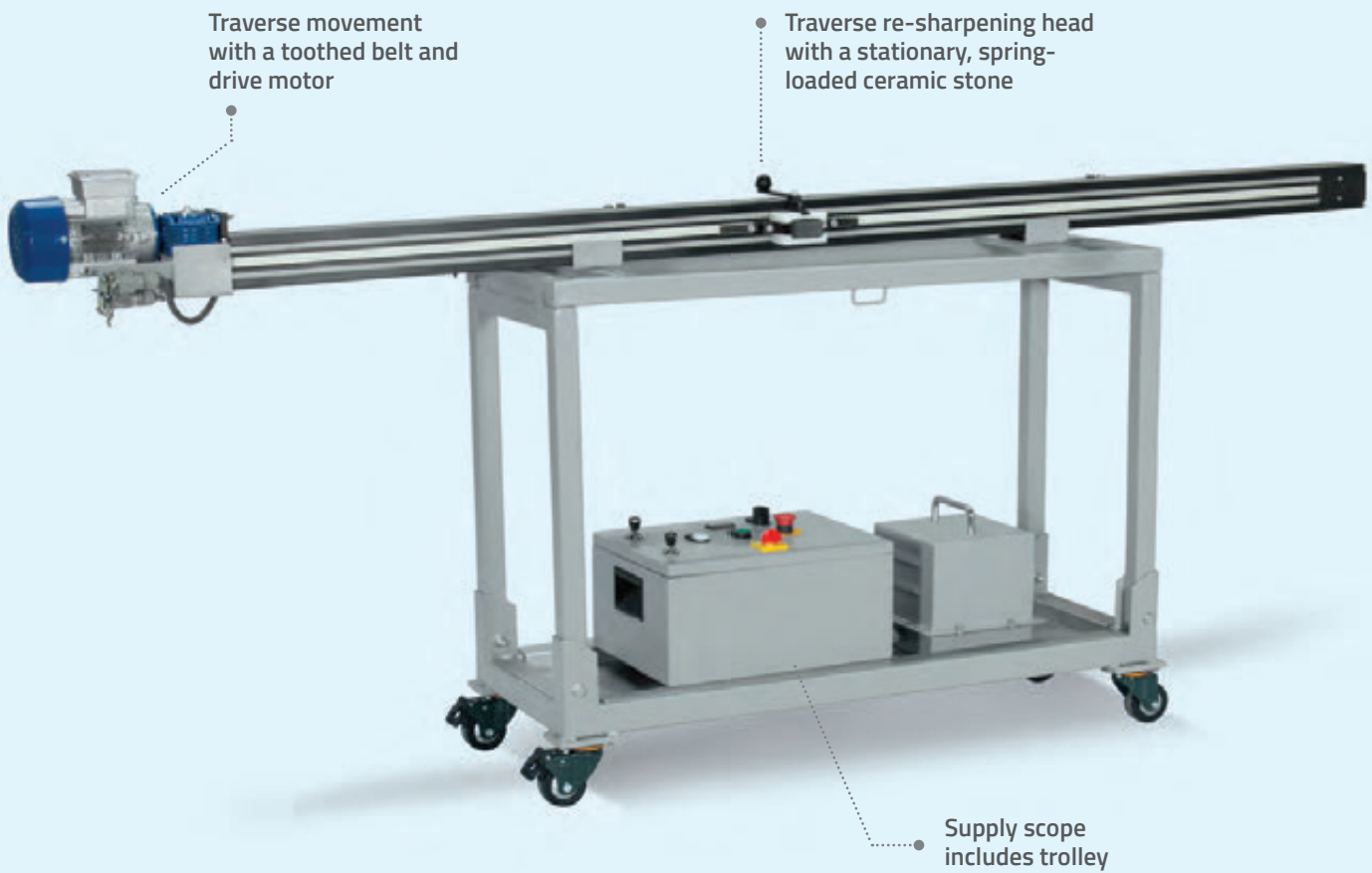
60" - 40" Conversion



Stone Truing Attachment

TRAVERSE SHARPENING DEVICE TSD 100 & TSD 40

CONSTRUCTION



40" TSD in Supply Scope

EASY TO USE
PROFICIENT
ENHANCING QUALITY

FEATURES

- Suitable for high production cards of 40", 51" & 60" width in respective model.
- Different traverse speed for cylinder and doffer with selector switch.
- Traverse movement is counted by a digital counter.
- High-precision resharpening of wire points with TSD enhances the life of clothing and ensures optimum carding sliver quality.
- Maintenance-free device, supplied with a trolley for easy transportation.

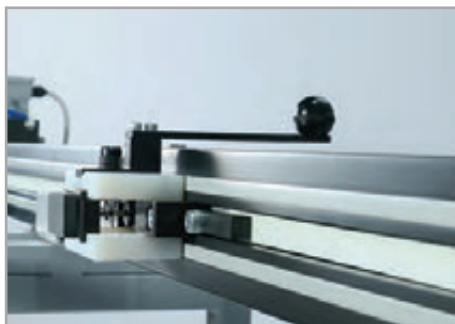
SPECIFICATIONS

Motor rating	: 0.18 kW three phase 230 / 415 V
Input supply voltage to step down transformer	: Three phase / 380-440 volts / 50 Hz (2 Phase connection used)
Machine input voltage (After step down transformer to control box)	: Single phase / 230 volts / 50 Hz

TRAVERSE SPEED

Cylinder wire	: 6 meter / minute
Doffer wire	: 1 meter / minute
Total weight	: 23 kgs (excluding trolley)

COMPONENTS



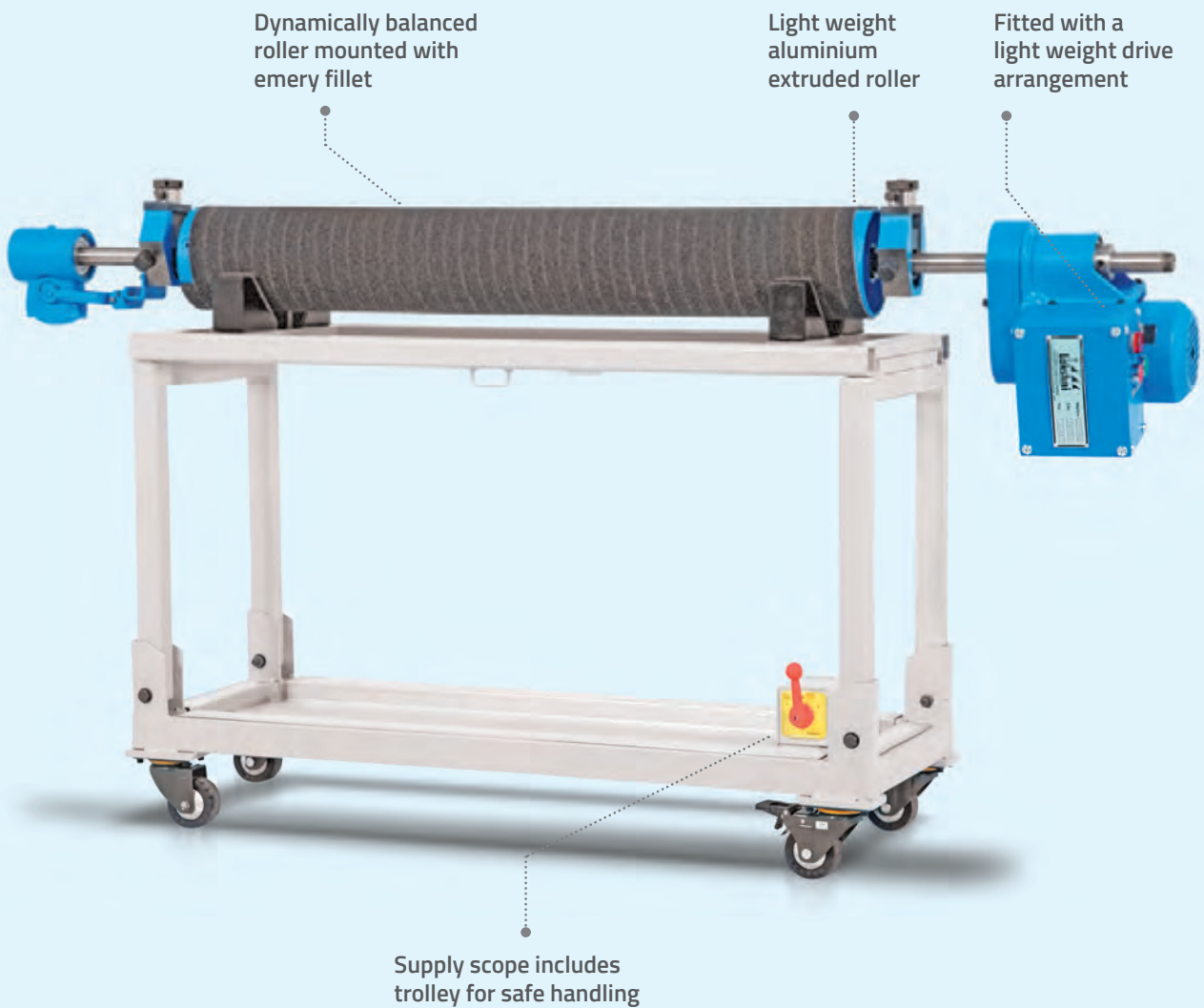
Traverse Sharpening Stone



Cylinder Resharpening

RESTORE - ON THE CARD FLATS GRINDING MACHINE OFGM 60 & OFGM 40

CONSTRUCTION



LIGHT WEIGHT
EFFICIENT
DYNAMIC

FEATURES

- Easy to operate and maintenance free.
- Maintains geometry of flat pins.
- Ideally suitable for high production cards.
- Better control over grinding.
- Available in 40" width for 40" LAKSHMI LC 300A → LC 361, RTR C4 → C51, TRTZLR DK 740 → TC 07 & CRSL MK4 → MK7 Cards.
- Available in 51" width for 51" TRTZLR TC 11 cards.
- Available in 60" width for 60", LAKSHMI LC 636 & RTR C60/C70/C72/C75 cards.

SPECIFICATIONS

Motor rating	: Three phase, 0.5 hp 1440 rpm
Emery fillet	: Silicarbo No.7 (Grooved Type)
Emery roller speed	: 750 rpm
Roller diameter for all models of RTR / TRTZLR / LAKSHMI / CRSL MK6, MK7	: 150 mm
Roller diameter for CRSL MK4, MK5	: 226 mm

COMPONENTS



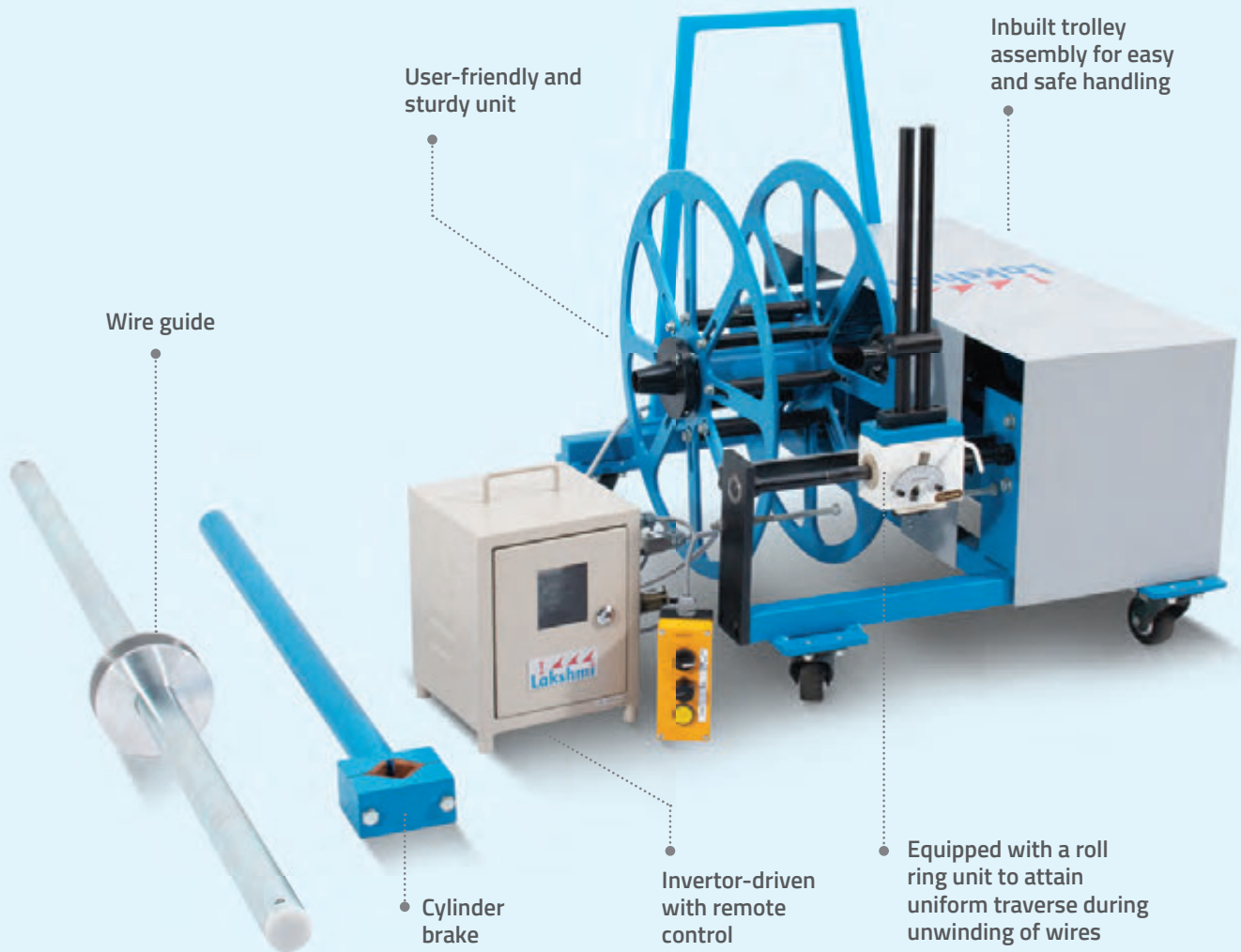
Dia 150 mm Roller / 226 mm Roller



Traverse Gear Mechanism

WIRE DE-MOUNTING MACHINE

CONSTRUCTION



Wire Guide for Reverse Unwinding



Roll Ring Traverse System

FAST
USER FRIENDLY
ADJUSTABLE

FEATURES

- Enables quick and easy demounting of wires.
- Perfectly suitable for all card widths up to 60".
- Adjustable spool holder provided to accommodate all types of spools.
- Wire can also be demounted using an inbuilt arrangement in the machine.

SPECIFICATIONS

Motor rating	: Three phase, 1.5 hp, 1000 rpm
Effective working width	: Up to 60"
Demounting speed	: Up to 50 rpm
Volts	: 415 V / 380 V
Phase	: 3 Phase
Frequency	: 50 Hz
Drive power/MCB rating	: 2 hp/10 amps
Dimensions mm (LxHxW)	: 950 x 730 x 782

COMPONENTS



Demounting

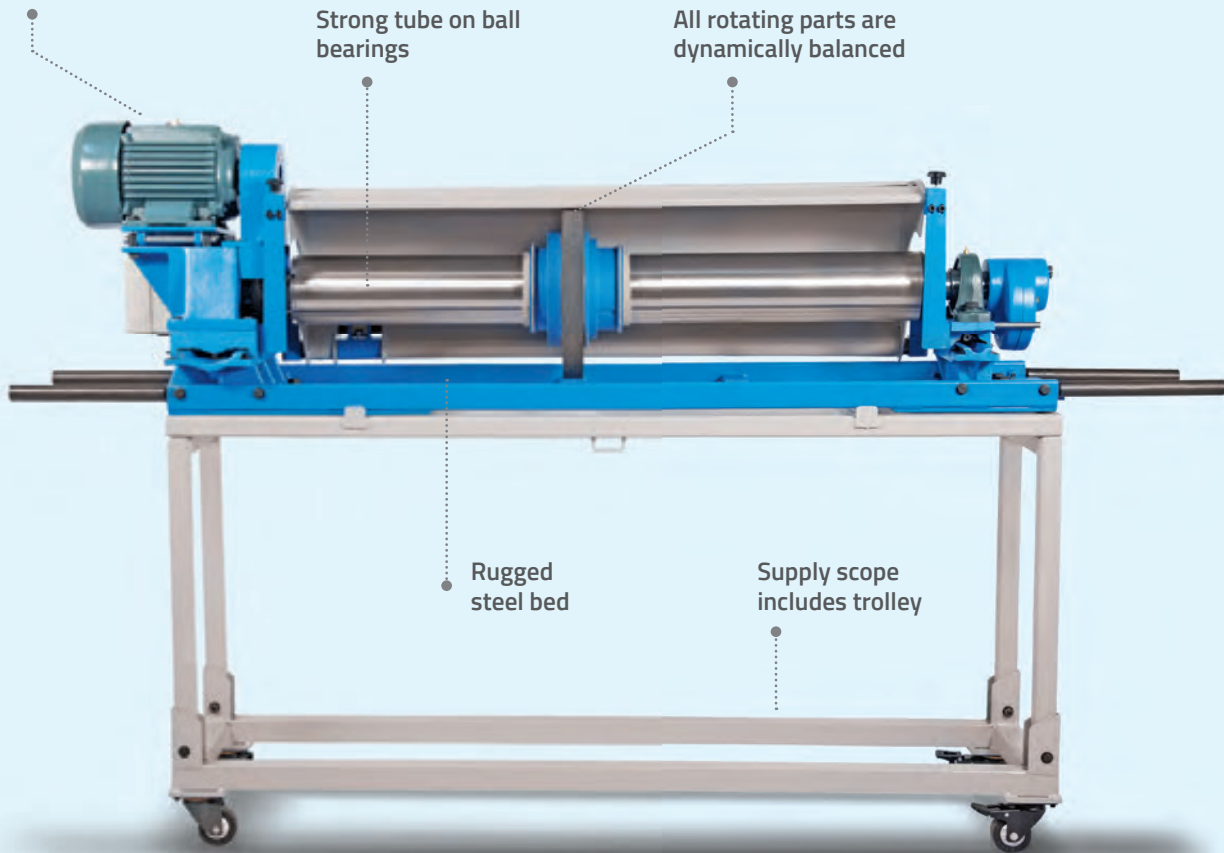
BARE CYLINDER GRINDER BCG 40

CONSTRUCTION

Driven by electric motor
through "V" belts

Strong tube on ball
bearings

All rotating parts are
dynamically balanced



Rugged
steel bed

Supply scope
includes trolley

RUGGED
POWERFUL
IDEAL

FEATURES

- Absolutely true grinding of the cylinders / doffers.
- Can be set parallel to the cylinder by means of threaded spindle.
- Built-in dressing attachment.

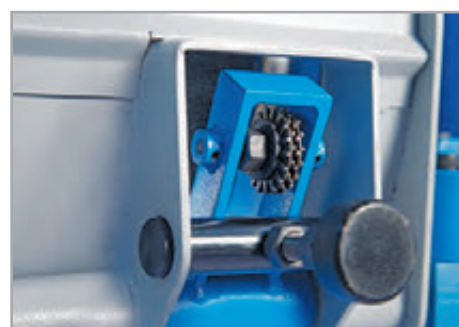
SPECIFICATIONS

Motor rating	: Three phase, 3 hp, 1400 rpm
Effective working width	: 40"
Grinding wheel diameter	: 350 mm
Grinding stone: For cast iron	: C36 15VG
Grinding stone: For steel	: A36 K5 V10
Attainable run-out accuracy	: 0.02 to 0.03 mm
Grinding roller speed	: 1100 rpm

COMPONENTS



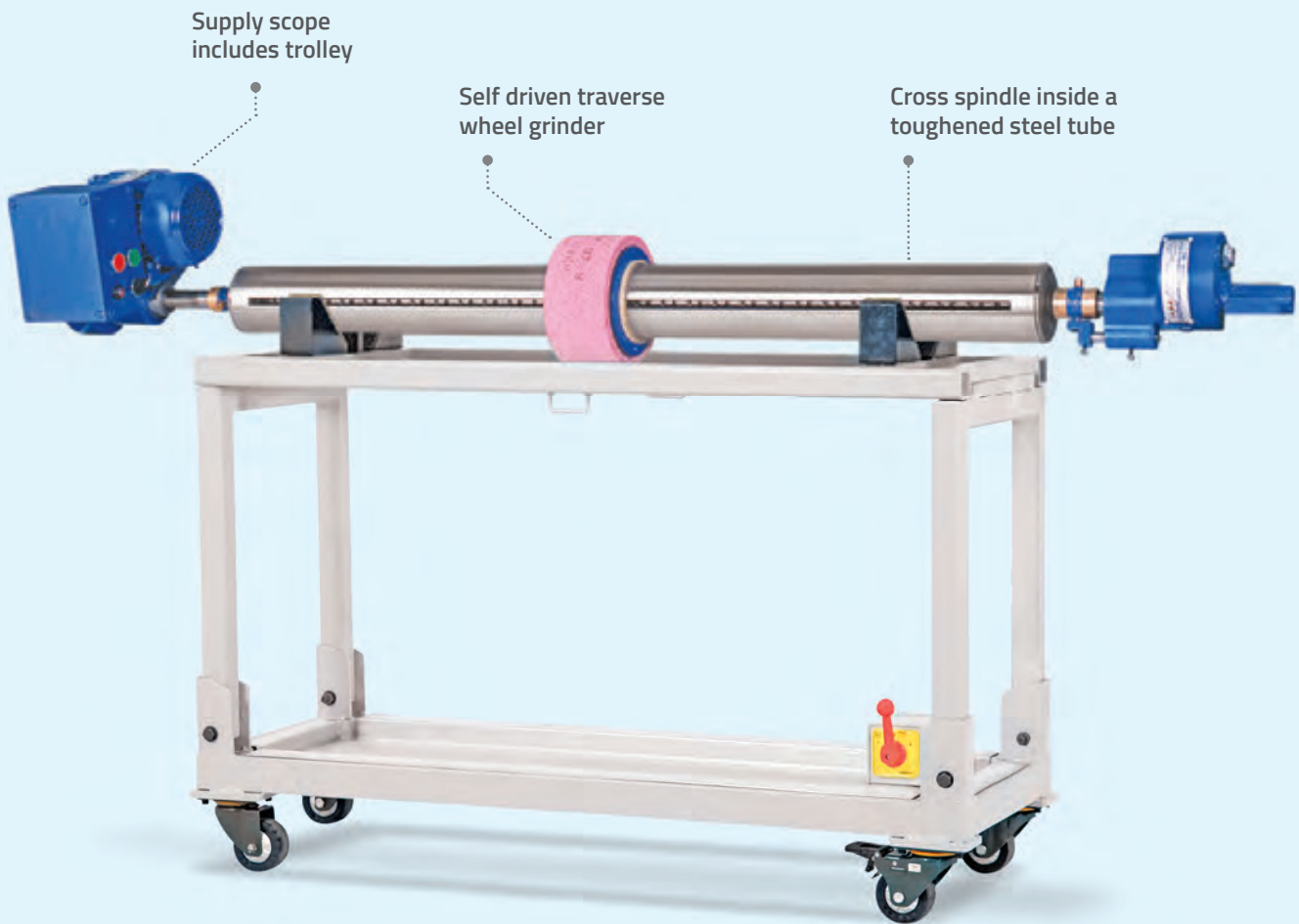
Grinding Wheel



Stone Dresser Unit

MOTORISED TRAVERSE WHEEL GRINDER MTWG 40

CONSTRUCTION



TOUGH
VIBRATION FREE
CONSISTENT SPEED

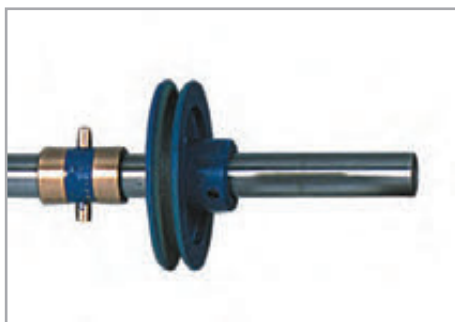
FEATURES

- Vibration free run.
- Has simple truing device for dressing.
- Positive drive and uniform grinding speed.
- Also available with pulley drive.

SPECIFICATIONS

Motor rating	: Three phase, 0.5 hp, 1380 rpm
Effective working width	: 40"
Grinding wheel diameter	: 180 mm
Grinding wheel specification	: 25A 54 G 19 VCR
Size of wheel	: 180 x 137 x 90 mm
Grinding roller speed	: 850 rpm

COMPONENTS



Pulley Drive



Motor Drive

TOOLS AND ACCESSORIES



Carbide Plate Plain,
Carbide Plate Stepped



Ceramic Plate Plain,
Ceramic Plate with Step



Carbide Plate 8VG, Carbide Plate 12VG,
Carbide Plate 16VG



Carbide Plate Female 8VG,
Carbide Plate Male For 6-32VG,
Carbide Plate Female 12-16VG



Carbide Plate for Grooved Lickerin
(2 mm) - MRM Machines



1 Set = 11 Nos.

11 up Roller Assembly Complete for
Wire Mounting Machine



Finger Guide Roller Assembly -
(Roller Finger)



Tipped Finger - For Wire Mounting
Equipment



Servo 11 CAM Cleat 3-7 Mm SV11
- Includes Wire Fairlead



Press Roller Assembly for LICKERIN & ERM BEATER



Soldering Iron 500 W with Tin / Lead & Flux



Oil Stone 150 x 50 x 25 mm



Burnishing Pad (L 203 x H 103 x T 25 mm)



HSS Milling Cutter for Shoe Type Polymer End Connector



Solid Carbide Milling Cutter



Template 0.55 mm Cast Iron



Template LC363 / 361 / 636
Ring Cotton - 0.4 mm
OE Cotton & Synthetic - 0.6 mm



Template 150 mm,
RTR C 60 / C 70, 0.6, R 415

TOOLS AND ACCESSORIES



Stripping Tool for Flat De - Clipping



Pre-Bending Roller Assly. for Lakshmi Flat Clipping Machine



Form Roller Assly. 5 Deg, 10 Deg, 15 Deg, 20 Deg (For LFCM Splited Spindle, Flat Clipping Machine)



Clamping Support Plate for TRTZLR Cards Aluminum Flats



Clamp Support Plate - All Cards



Clamping Support Plate LH & RH for RTR C 60 / C 70 / C 72 & C 75 Cards



Traverse Sharpening Device - Sharpening Stone



Dial Gauge Type KO2, 0.01mm for Flat End Milling Inspection Device



Dial Gauge 3046s "MITUTOYO" for Flat Clipping and Flat Grinding Inspection Device



Card Setting Leaf Gauge
(400 mm x 30 mm width) -
(Consist of 4,5,6,7,8,10 and 12/1000)



Card Setting Leaf Gauge
(300 mm x 30 mm width) -
(12" with 4,5,6,7,8,10 and 12/1000)



Card Setting Leaf Gauge with Handle -
Individual Leaf



Flat Setting Gauge with Handle
(7T (0.175mm), 8T (0.20mm),
9 (0.225mm), 10(0.25mm),
12 (0.30mm) & 14 (0.35mm))



DINOLITE - AM 2111 Series (Digital
Microscope) for wire inspection through
Laptop and hand phone



Magnifying Glass 30 X - for Manual Wire
Inspection

LCC offers a wide range of accessories and service maintenance spares and components in high precision.

LCC has earmarked critical components which are prone to wear out relatively quickly that may have detrimental effect if not maintained in good working condition. These components require special attention and replacement at the end of their lifespans in order to ensure trouble-free wire installation and attaining high accuracy.

Besides offering special quality components which undergo less wear and tear for Card service machine, LCC also offers card setting gauges, hand grinding (oil) stones, burnishing pad for attaining good accuracy and good sharpness in card clothing for delivering excellent carding sliver quality.



LAKSHMI CARD CLOTHING MFG CO. PVT. LTD.

1089, Lakshmi Plaza, Avinashi Road, Coimbatore - 641 037, INDIA.

Tel : +91 422 2240205 - 9, Fax : +91 422 2246694,

Email : exports@lakshmicardclothing.co.in

lakscardexport@lakshmicardclothing.com

Website : www.lakshmicardclothing.com

