



INDO CONSTRUCTION FASTENING SYSTEMS

A brand of Indo Spark Group Since 1978



CM350VESF / CM420VESF

Chemical Mortar

Indo Construction Fastening Systems

Indo Construction Fastening Systems (ICFS) is a 45+ years company, having expertise and operations in the following three verticals:

- ICFS Anchor Fastening Systems
- Construction Services
- ICFS Anchor Designer

We have chemical and mechanical anchors usable for installing furniture, fixtures & structures at site. Based on the design load parameters, we even suggest correct type of chemical, diameter of anchor bolts, embedment depth and chemical consumption per hole.

ICFS - Leading manufacturer and anchor solutions provider in India offers a complete range of high-quality anchors, including:

- Chemical anchor studs (Anchor Stud diameter 8 mm and length up to one meter (1000mm) can be manufactured on specific request
- Nylon anchors
- Mechanical anchors like through bolt anchors We can help you find the right anchor for your specific needs and ensure a secure and reliable fastening.

Our story

«From an automotive workshop employing just 2 in 1978 to what we are today-a well-known, successful, respectable, leading business house in India.

It was indeed a long journey. A journey full of challenges, hardships, bottlenecks. But we came out intact and grew many folds - vertical and horizontal.

The best assets of ours, I think are our reputation for honesty, fair dealing, timely delivery and quality.

As I look back there are two main factors which made Indo Spark blossom. First is the wisdom and honesty of our chairperson Mr. Tilakchand Ingale along with his trust in the employees and second is the wholehearted, sincere, hard work put up by our employees – young and old including technicians and workmen.

One thing is certain

We have never stopped growing.

Sandeep Ingale, CEO Indo Spark Group

Chemical Mortar **CM350/420VESF**



Description

The CM350/CM420VESF is a high performance rapid curing styrene free low odor two-component chemical injection anchoring system based on high reactivity unsaturated vinylester resin in methacrylate monomers. The side by side/co-axial cartridge format comprises of a resin and hardening agent in separate internal compartments which are mixed to the correct proportions in the delivery nozzle when triggered using the required manual dispenser.

CM350/CM420VESF is a multi-purpose bonded anchoring system with improved performance. It is suitable for use in dry, wet and flooded holes. Formulated free of styrene, CM350/CM420VESF has a very low odour and is ideal for use in confined spaces and indoors.

CM350/CM420VESF bonded anchoring system is CE Marked and has an Option 7 European Technical Assessment for anchoring into uncracked concrete, an ETA for post installed rebar connections as well as a masonry ETA for anchoring into hollow and solid masonry.

Variant 350ml side by side cartridge.
Material Vinylester Styrene Free

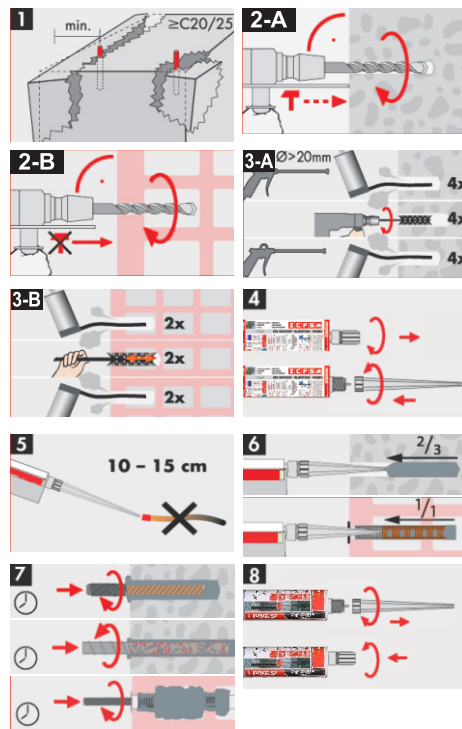
Variant 420ml co-axial cartridge
Material Vinylester Styrene Free

Features

- Non Flammable.
- Non-hazardous environmentally friendly low odor.
- Extreme heat and high chemical resistance.
- High load values in concrete and masonry for medium to heavy duty applications.
- Imparts no expansion stresses on the base material.
- Suitable for close to edge and reduced anchor centre fixing.
- Usable in damp and wet environment and submerged drill holes.
- Rapid cure.
- Vibration resistant.
- Corrosion resistant.

Features

- Canopies- Ventilated Facades
- Railings
- Bicycle Racks
- Balcony Fences
- Hand Rails
- Machinery



GEL & CURE TIME TABLE

Temp (°C)	Gel Time (min.)	Cure Time (hrs.)
+5°C (↑ MIN +10°C)	18 min	145 min
+5°C to +10°C	10 min	145 min
+10°C to +20°C	6 min	85 min
+20°C to +25°C	5 min	50 min
+25°C to +30°C	4 min	40 min
+30°C	4 min	35 min

Product Code	Content (ml)	Colour when mixed	Package content
CM350VESF	350	Grey	12
CM420VESF	420	Grey	12



Chemical Anchor Stud Grade 5.8 & 8.8, SS304 and SS316



Description

The Chemical Anchor CAS is a chisel ended anchor for use with any of our injection systems and glass capsules in masonry and concrete. On Installation the stud becomes chemically bonded to base material. The nut may be removed and replaced without affecting the anchorage. The chemical anchor CAS is supplied complete with high tensile hex nut and plain washer in addition to one external hex drive adapter in each box.

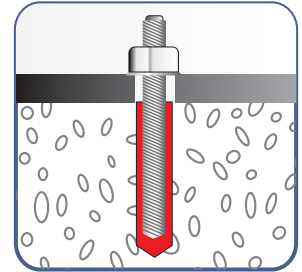
Features

- Suitable for non-cracked concrete
- High loading capacity
- SS material for corrosive environment
- Suitable for dry & water saturated concrete
- Anchor Stud length longer than one meter (1000mm) can be manufactured on specific request

Application

- Fastening in concrete
- Machine Foundation

Range: M8 x M110 to M30 x 1000



Product code Zinc plated 5.8 Grade	Anchor thread size(mm)	Anchor Length (mm)	Hole Diameter (mm)	Effective anchoring depth (mm)	Max.usable Length (mm)	Width across nut (mm)	Hex nut (mm)	Washer in dia (mm)	Washer outer dia (mm)	Washer thickness (mm)	Package content pcs per Box
CAS08110E	M 08	110	10	80	13	5	13	9	15	1	25
CAS10130E	M 10	130	12	90	20	7	17	11	19	2	25
CAS10160E	M 10	160	12	90	52	7	17	11	19	2	25
CAS12160E	M 12	160	14	110	25	8	19	13	19.5	3	20
CAS12220E	M 12	220	14	110	90	8	19	13	19.5	3	20
CAS12250E	M 12	250	14	110	120	8	19	13	19.5	3	20
CAS16165E	M 16	165	18	125	13	12	24	17	29	4	10
CAS16190E	M 16	190	18	125	35	12	24	17	29	4	10
CAS16250E	M 16	250	18	125	98	12	24	17	29	4	10
CAS16300E	M 16	300	18	125	148	12	24	17	29	4	10
CAS16380E	M 16	380	18	125	235	12	24	17	29	4	10
CAS16500E	M 16	500	18	125	355	12	24	17	29	4	10
CAS20170E	M 20	170	25	125	135	12	30	21	30	4	10
CAS20260E	M 20	260	25	170	105	12	30	21	36	4	10
CAS20350E	M 20	350	25	170	155	12	30	21	36	4	10
CAS20500E	M 20	500	25	170	305	12	30	21	36	4	10
CAS24300E	M 24	300	28	210	65	16	36	26	43	5	5
CAS24400E	M 24	400	28	210	165	16	36	26	43	5	5
CAS24600E	M 24	600	28	210	365	16	36	26	43	5	5
CAS27400E	M 27	400	32	210	165	18	41	28	49	5	5
CAS30380E	M 30	380	35	280	65	25	46	33	55	5	5
CAS30500E	M 30	500	35	280	185	25	46	33	55	5	5

Accessories

Blow out pump **BP**



Hand Operated

Material: ABS

Description

The hand operated blow out pump BP is for drill hole cleaning prior to anchor installation.

Important Note:

Performance based on clean holes;

HAMMER DRILLED - blown and then brushed with a still metal brush & blown again.

Product code	Overall length (mm)	Package content
BP280	280	1

Dispenser **DM350 / DM420**



Material: Steel body & mechanism

Description

The professional dispenser DM350 / DM420 for use with chemical mortar cartridges. 350ml side by side 10 :1, 420ml Co-axial 10 :1 ratio cartridge

Dispensers are also suitable for 350ml, 360ml, 410ml, 10:1 cartridge, 380ml and 420ml cartridge

Product code	Overall length (mm)	Package content
DM350 Red (Eco)	350	1
DM350 Black (Heavy Duty)	350	1
DM420	420	1

Chemical Mixer **Nozzle**



Variant: Co-axial / side by side

Material: Plastic

Description

Mixer Nozzle used with ICFS resin cartridges.

Chemical mixer nozzle can also be used with other brand chemical cartridges

Spare mixer nozzle for use with chemical mortar cartridges CM350P, CM350VESF, AGNI420, CM420VESF, CM400PE, and CM360SH

Cleaning brush **CB**



Variant: Hand Operated

Material: Steel body & head

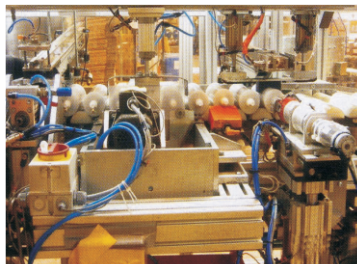
Description

Wire brush CB is for thorough cleaning and hole preparation.

Product code	Length (mm)	Overall length (mm)	Package content
CB0816	13	8-16	1



ICFS Chemical Production Unit



CHANNEL PARTNER



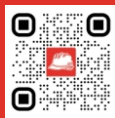
INDO SPARK CONSTRUCTION SERVICES

CORPORATE OFFICE

198, E Ward, Tararani Chowk,
Near Geeta Mandir,
Kolhapur - 416 003 (Mah.India)
Toll Free : 1800 123 500 023
E-mail : mail@indospark.com

BRANCHES

Pune | Mumbai



FOLLOW US



www.indospark.com