



Invisible Grille

MASTER CATALOGUE



KNOW

ABOUT US

A Tradition of Quality, Service & Excellence

Founded on the unyielding principle of "**Customer First**", Nitin wire Group takes pride in being positioned as a leader in the fencing industry. Specializing in the manufacture, sale and installation of a wide variety of fencing and related products, we are dedicated to exceeding expectations on quality, price, and schedule.

Our vast experience and knowledge of being in the industry for nearly 5 decades, gives us the confidence of delivering exceptional fencing solutions to any of your domestic, commercial and industrial fencing needs.

Built on reliability, workmanship, professionalism, and integrity, we aim to provide a seamless service to ensure the smoothest finish to your valuable assets. Be it serving a customer for the first time or multiple times, we at Nitin Wire Group, strive to maintain excellent service in upholding our dependable reputation.

CUSTOMIZED
FENCE AND
MESH SOLUTIONS





Know about Invisible Grille

Invisible Grille is an advanced grille system that provides security for your family, especially children, and it doesn't affect the overall appearance of your home. It is made of high-quality stainless steel cable (316L GRADE), coated with nano-technology membrane for extra protection against wear and tear. It is anti-rust, anti-dust and does not need regular maintenance. It is the modern, secure grille system for your family.

Today, both safety and aesthetics are major concerns when shopping for window grilles. This explains why invisible window grilles have become a popular choice for many new homeowners. You'd most definitely prefer something that not only safeguards but does not look like prison grilles. And Invisible grilles simply fit that criterion.

Why to Choose Invisible Grilles?

- Engineered with stainless steel cable system (anti-rust)
- Easy cleaning Invisible grille
- Less maintenance
- Stylish and modernized grille provides semi-outdoor and open character
- Provides stylish see-through panoramic view
- Sustain and uphold building appearance
- Provides safety and security



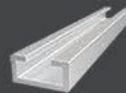
NYLON COATED



STRONG ROPE

316

316 STAINLESS STEEL



ALUMINIUM TRACK



LOAD CAPACITY

Invisible Grille Applications



High Rise
Apartments



Constructions
& Real estates



Villas &
Residential Owners



Schools &
Colleges

Securing Simply

Most Advanced Grille Technique

INVISIBLE GRILL FOR SAFE AND STYLISH BALCONIES & WINDOWS

- Kids Safety
- Anti Bird Solution



P.H. ROAD



KOTTURPURAM



KOTTURPURAM



ROYAPETTAH



KILPAUK



2 INCHES GREY COLOR CHANNEL

KILPAUK



2 INCHES GAP-HORIZONTAL

PURASAIWAKKAM



3 INCHES GAP-HORIZONTAL

PURASAIWAKKAM



BINNY GARDEN



R.A. PURAM



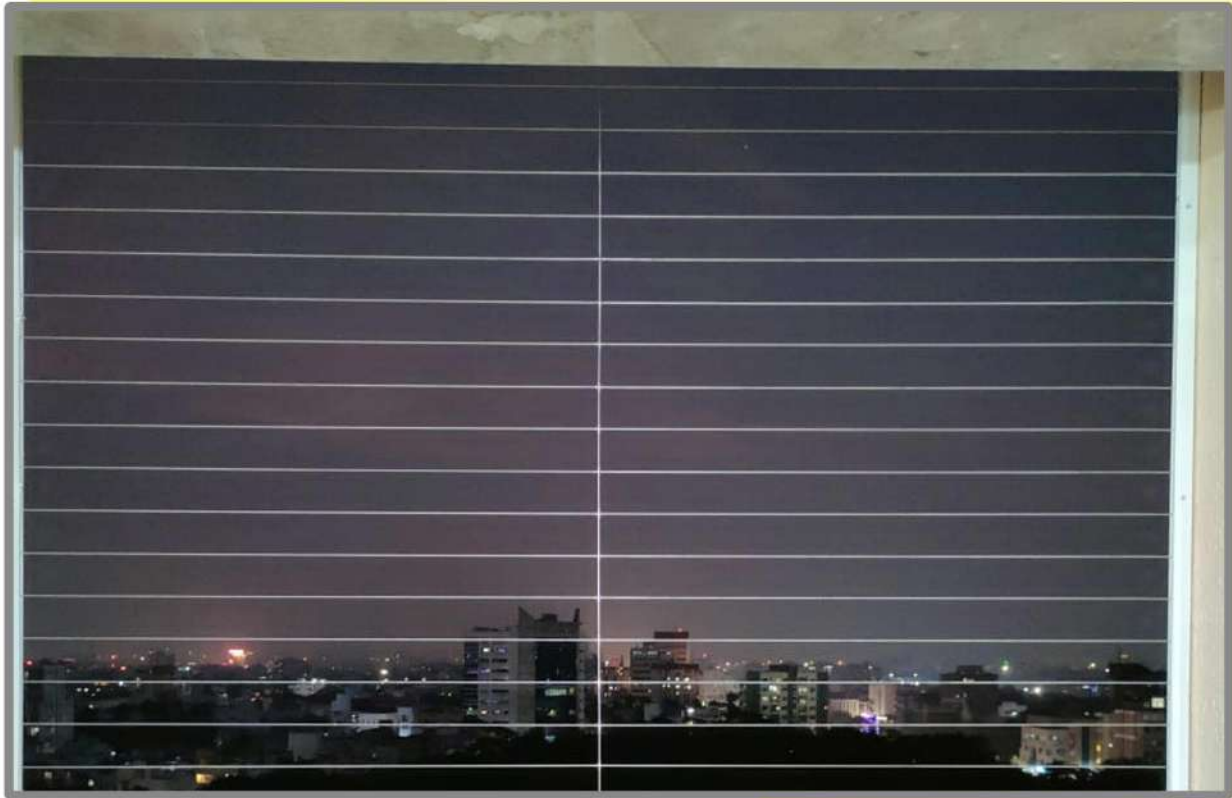
PURASAIWAKKAM



ANNA NAGAR



VERTICAL VIEW-KILPAUK



HORIZONTAL VIEW-KILPAUK



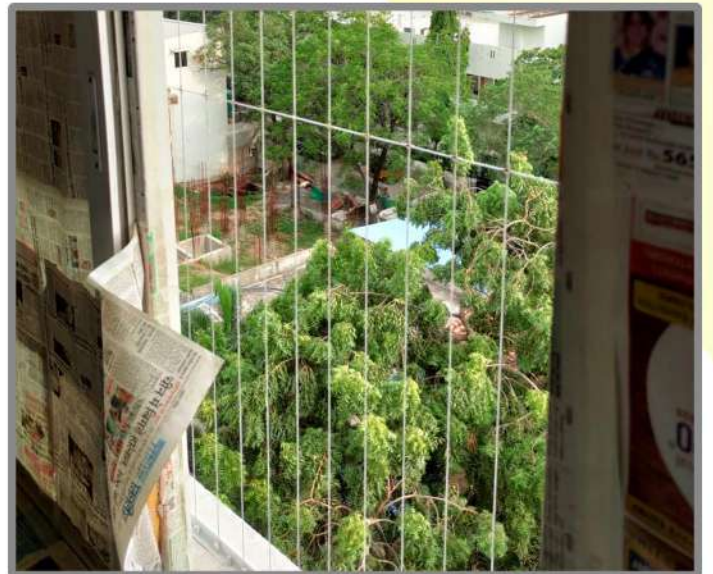
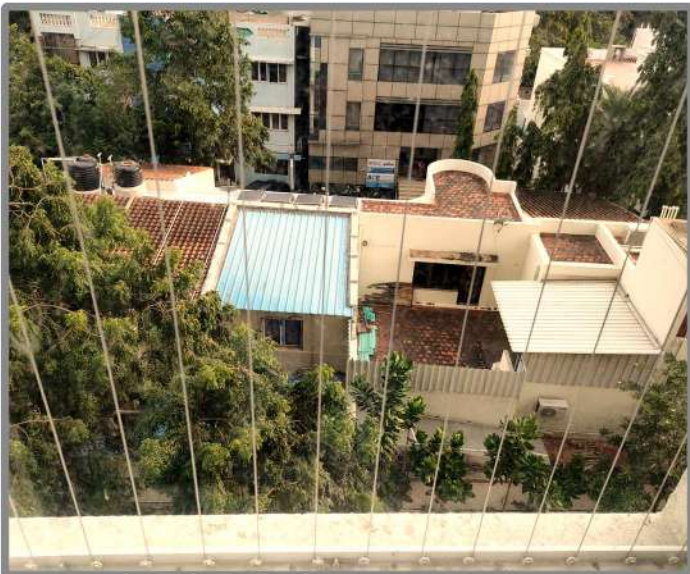
KELLYS



PATTALAM



BINNY GARDEN



VEPERY



VEPERY



OMR PADUR



HALF GRILLED BALCONY

VADAPALANI



HALF GRILLED BALCONY

PATTALAM



**HALF GRILLED BALCONY
KOYAMBEDU**



PATTALAM



KOYAMBEDU

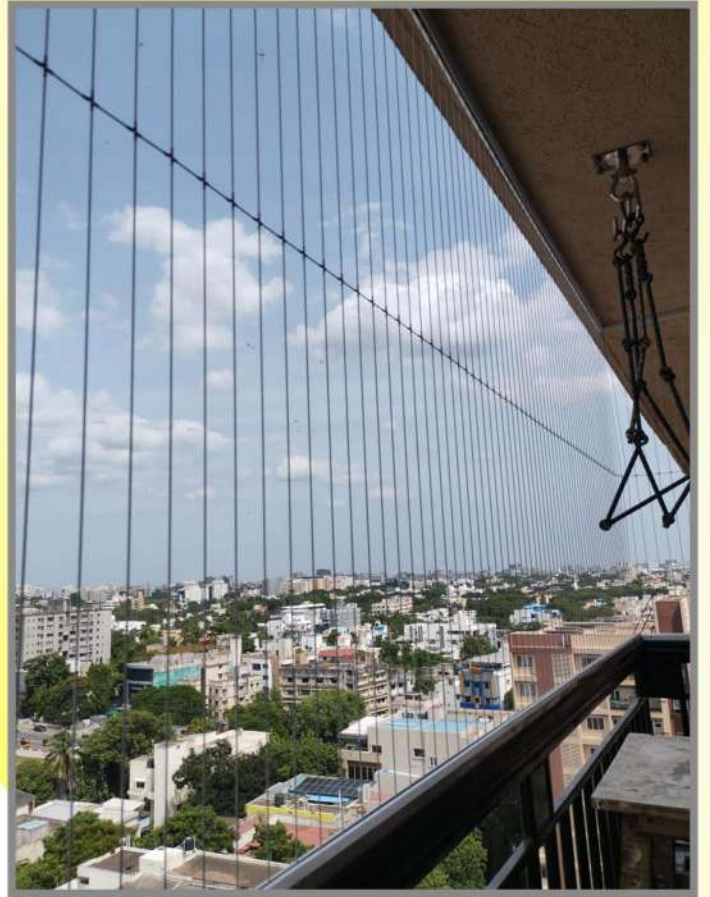


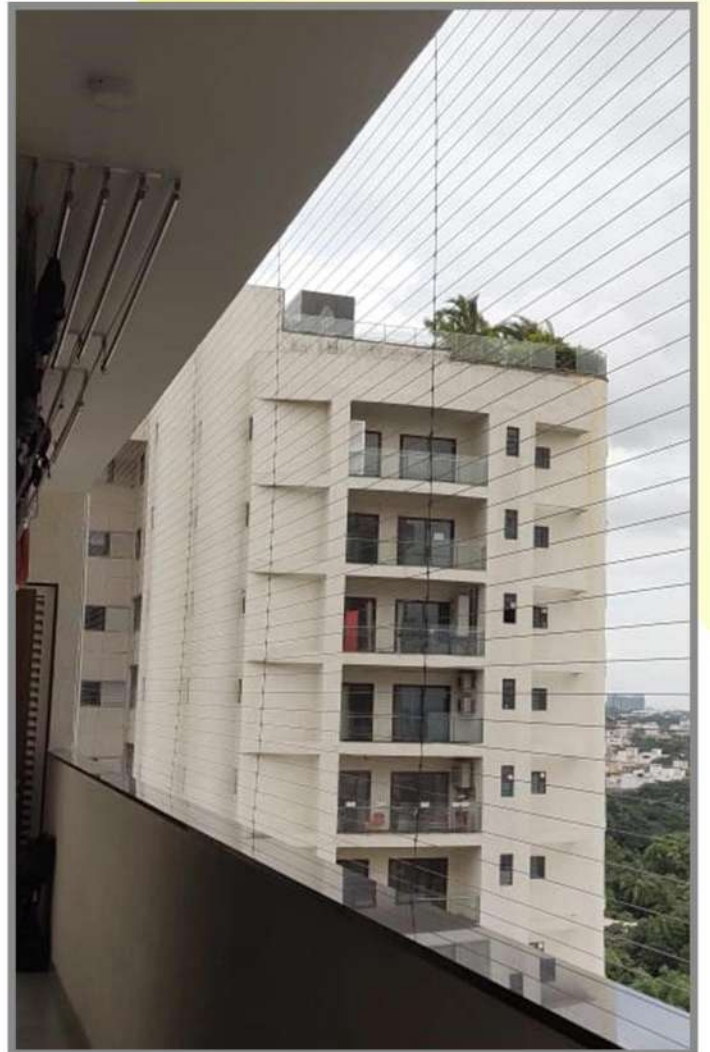
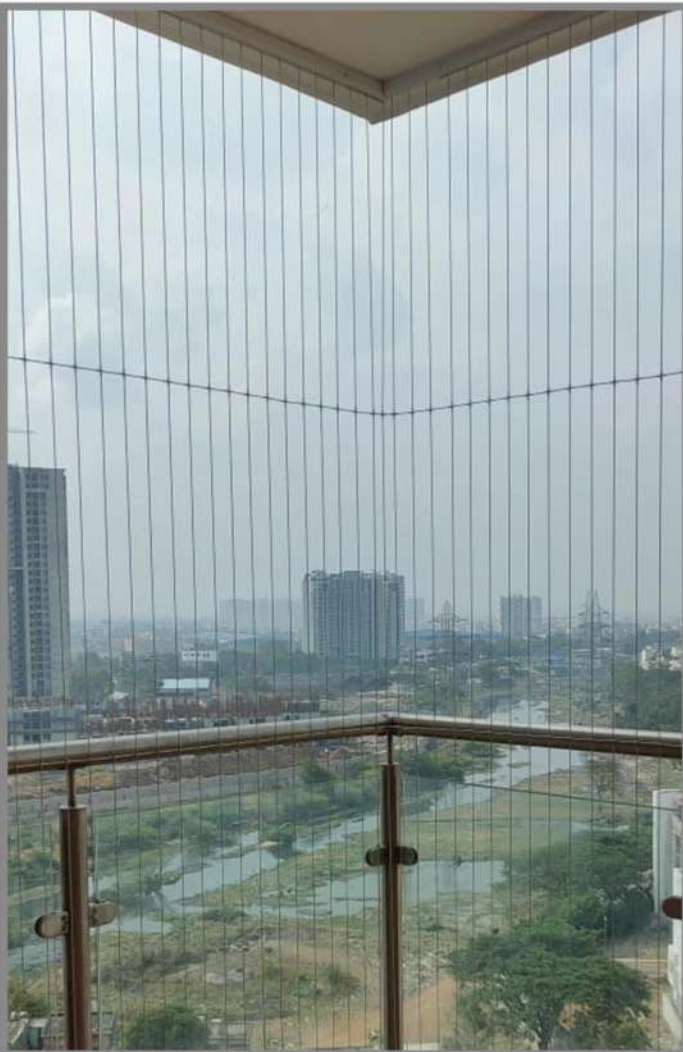
VEPERY

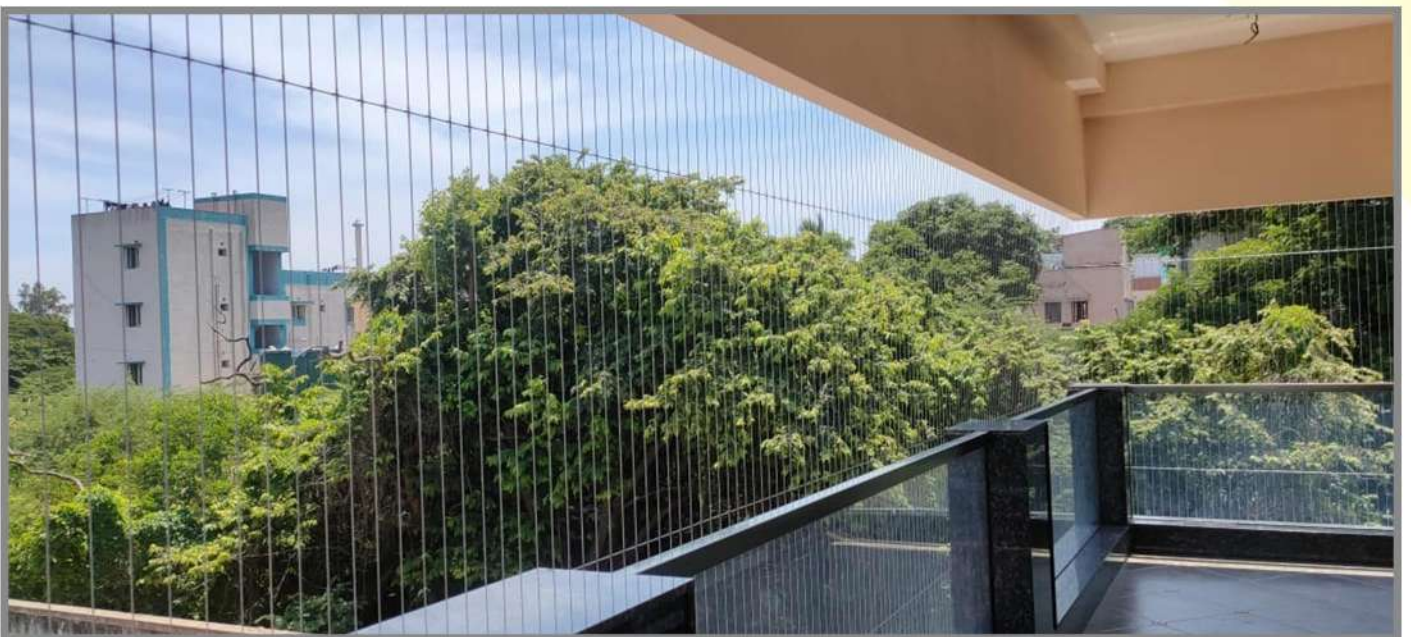


NOLAMBUR
















www.nitinwiregroup.com

   / Nitin Wire Group



Scan this for Product Demo & Assistance,
Or Call us at **+91 63 69 59 44 40**



Office: No.89 & 92 E.V.K.
Sampath Road, Vepery,
Chennai- 600 007, TN



Manufacturing Unit:
Manamai, ECR, TN.
Hyderabad



Warehouse located:
Madhavaram, Chennai
Manamai, ECR, TN
Portblair



+91 44 25324615
+91 44 25321159
+91 44 26414960



+91 63 69 594 440
+91 98 40 252 251



smartfence@nitinwiregroup.com