



Facade Mesh

MASTER CATALOGUE



KNOW

ABOUT US

A Tradition of Quality, Service & Excellence

Founded on the unyielding principle of "**Customer First**", Nitin wire Group takes pride in being positioned as a leader in the fencing industry. Specializing in the manufacture, sale and installation of a wide variety of fencing and related products, we are dedicated to exceeding expectations on quality, price, and schedule.

Our vast experience and knowledge of being in the industry for nearly 5 decades, gives us the confidence of delivering exceptional fencing solutions to any of your domestic, commercial and industrial fencing needs.

Built on reliability, workmanship, professionalism, and integrity, we aim to provide a seamless service to ensure the smoothest finish to your valuable assets. Be it serving a customer for the first time or multiple times, we at Nitin Wire Group, strive to maintain excellent service in upholding our dependable reputation.

CUSTOMIZED
FENCE AND
MESH SOLUTIONS





Know about Facade Mesh

Specified for many iconic buildings around the world, **Expanded Metal Facade Mesh/Sunscreen Mesh** has become a critical tool for the Architects and Designers, not only practical but eye-catching and kinder on environment, too.

The structure of Expanded Metal Facade Mesh/Sunscreen Mesh aids the disruption of sound waves, deadening noise and reduction of echo. These practical features of the material in conjunction with its already proven architectural features make it perfect for both decorative ceiling tiles and acoustic panels and are chosen by designers and architects for their beauty and striking appearance.

In terms of refurbishment, dull, grey, concrete surfaces can be clad to renew buildings and send them hurtling into the 21st century. Expanded Metal Facade Mesh/Sunscreen Mesh can be supplied in mild steel, galvanised steel, stainless steel, aluminium, copper, brass sheets as per specific requirements and in wide range of openings and thickness. It can be powder coated and painted in various colours.

Architectural Applications: Cladding to Exterior Walls, Building Facade, External and Internal Ceilings, Decorative and Acoustic Panels, Partition Walls, Staircase Railings, Guard Railings, Curtain Walls and Screens, Balustrade Panels, Privacy Screens.



HIGHLY
AESTHETIC



ANTI
CLIMB



HIGH
STRENGTH



MAINTENANCE
FREE

Facade Mesh Applications



Manufacturing
Unit



Constructions
& Real estates



Schools &
Colleges



Villas &
Residential owners



Landscape

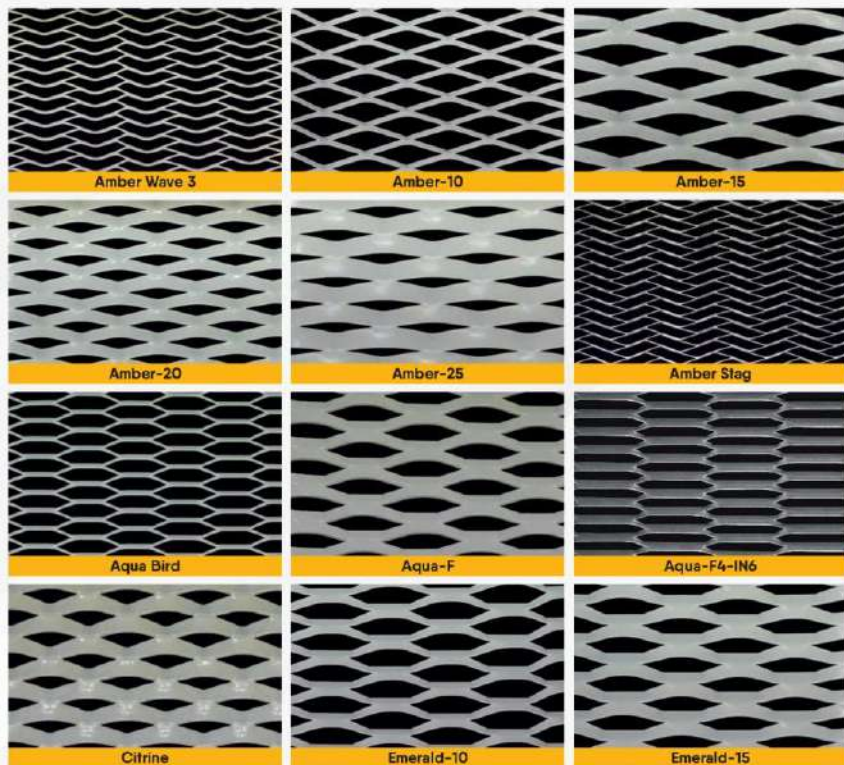


Warehouse

Striking Appearance

**Perfect for elevations
and attractive partitions**

Architects favourite choice,
Expanded Metal Facade Mesh

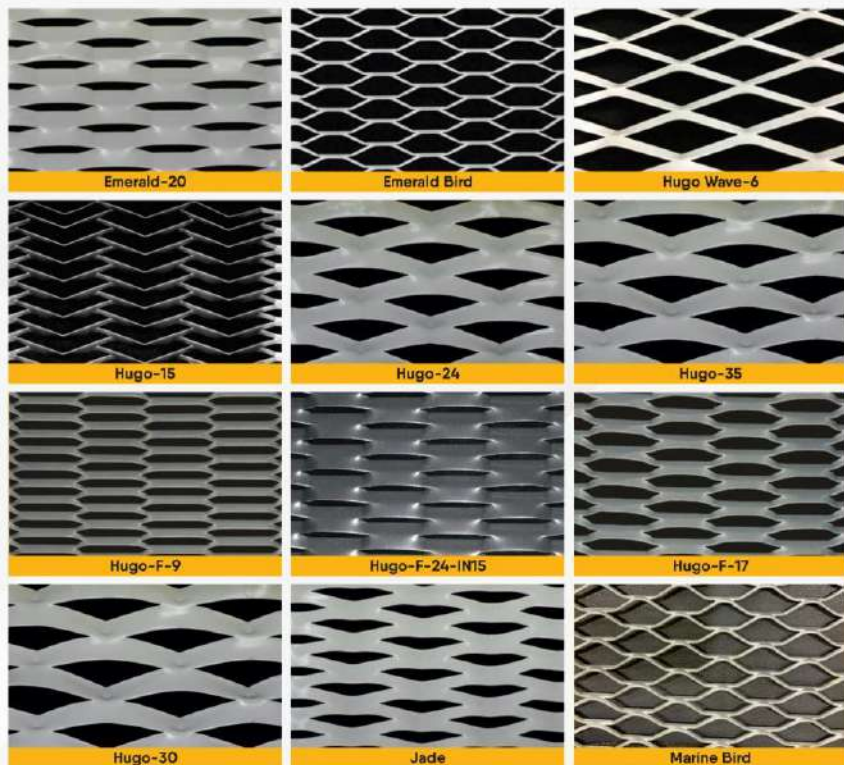


Dimensional Details of Facade Mesh/Sunscreen Mesh

Sr. No.	Style	SWM Inner Opening	LWM Inner Opening	Strand Width	Width in mm	Length in mm	%Open Area
1	Amber Wave 3	13mm	70mm	3mm	915/1220/1520mm	2550/5100mm	65%
2	Amber-10	35mm	97mm	10mm	915/1220/1520mm	2650/5300mm	55%
3	Amber-15	30mm	90mm	15mm	915/1220/1520mm	1750/3500mm	35%
4	Amber-20	25mm	90mm	20mm	915/1220/1520mm	1500/3000mm	30%
5	Amber-25	25mm	90mm	25mm	915/1220/1520mm	1450/2900mm	10%
6	Amber Stag	16mm	80mm	3mm	915/1220/1520mm	2600/5200mm	70%
7	Aqua Bird	11mm	50mm	3mm	915/1220/1520mm	3000/6000mm	60%
8	Aqua-F	13mm	60mm	11mm	915/1220/1520mm	1650/3300mm	15%
9	Aqua-F4-IN6	6mm	45mm	4mm	915/1220/1520mm	1500/3000mm	30%
10	Citrine	9mm	25mm	8mm	915/1220/1520mm	1600/3200mm	25%
11	Emerald-10	20mm	80mm	11mm	915/1220/1520mm	1800/3600mm	40%
12	Emerald-15	20mm	80mm	15mm	915/1220/1520mm	1600/3200mm	30%

***Material : Al/MS/Cu/Br | Thickness : 1.5/2/3mm**

MADE FROM ALUMINIUM, MILD STEEL, COPPER, BRASS, STAINLESS STEEL, ETC. Expanded Metal Facade Mesh will have tolerances in Width of $\pm 10\text{mm}$ & Length of $\pm 40\text{mm}$. SWM may vary by $\pm 3\text{mm}$, LWM may vary by $\pm 4\text{mm}$, Strand may vary by $\pm 0.5\text{mm}$, Thickness may vary by $\pm 0.2\text{mm}$.

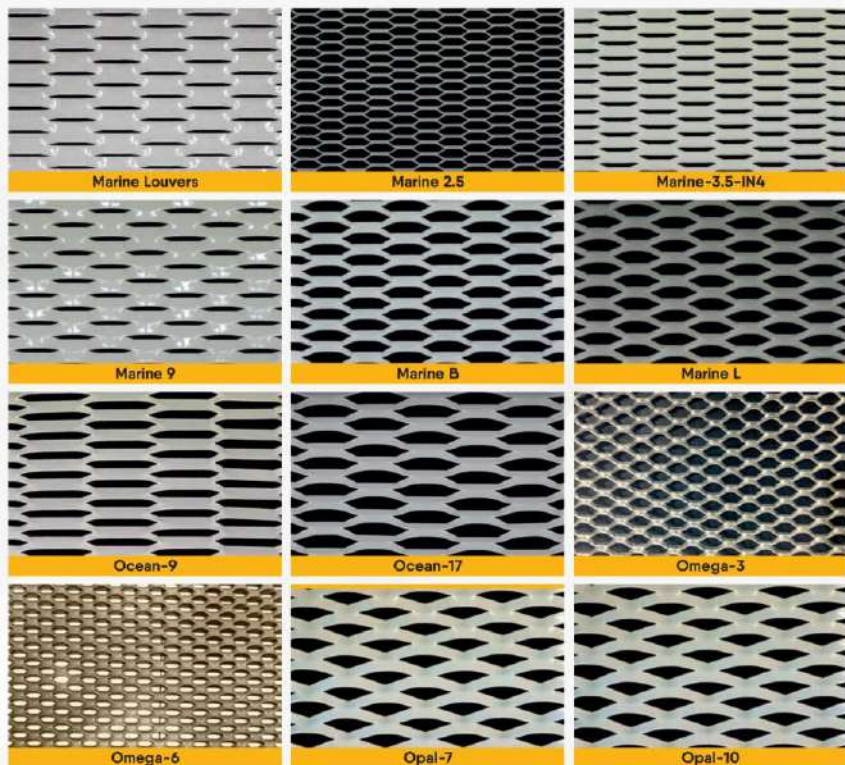


Dimensional Details of Facade Mesh/Sunscreen Mesh

Sr. No.	Style	SWM Inner Opening	LWM Inner Opening	Strand Width	Width in mm	Length in mm	%Open Area
13	Emerald-20	18mm	80mm	20mm	915/1220/1520mm	1450mm/2900mm	15%
14	Emerald Bird	23mm	80mm	5mm	915/1220/1520mm	3500mm/7000mm	65%
15	Hugo Wave-6	21mm	120mm	6mm	915/1220/1520mm	2500mm/5000mm	50%
16	Hugo-15	60mm	175mm	15mm	915/1220/1520mm	2900mm/5800mm	60%
17	Hugo-24	40mm	135mm	24mm	915/1220/1520mm	2000mm/4000mm	40%
18	Hugo-35	80mm	200mm	33mm	915/1220/1520mm	1450mm/2900mm	30%
19	Hugo-F-9	15mm	110mm	9mm	915/1220/1520mm	1600mm/3200mm	30%
20	Hugo-F-24-IN15	15mm	110mm	25mm	915/1220/1520mm	1270mm/2540mm	7%
21	Hugo-F-17	17mm	130mm	16mm	915/1220/1520mm	1650mm/3300mm	30%
22	Hugo-30	80mm	200mm	33mm	915/1220/1520mm	1600mm/3200mm	25%
23	Jade	18mm	75mm	11mm	915/1220/1520mm	1650mm/3300mm	35%
24	Marine Bird	13mm	40mm	2mm	915/1220/1520mm	5100mm	80%

*Material : Al/MS/Cu/Br | Thickness : 1.5/2/3mm

MADE FROM ALUMINIUM, MILD STEEL, COPPER, BRASS, STAINLESS STEEL, ETC. Expanded Metal Facade Mesh will have tolerances in Width of $\pm 10\text{mm}$ & Length of $\pm 40\text{mm}$. SWM may vary by $\pm 3\text{mm}$. LWM may vary by $\pm 4\text{mm}$. Strand may vary by $\pm 0.5\text{mm}$. Thickness may vary by $\pm 0.2\text{mm}$.

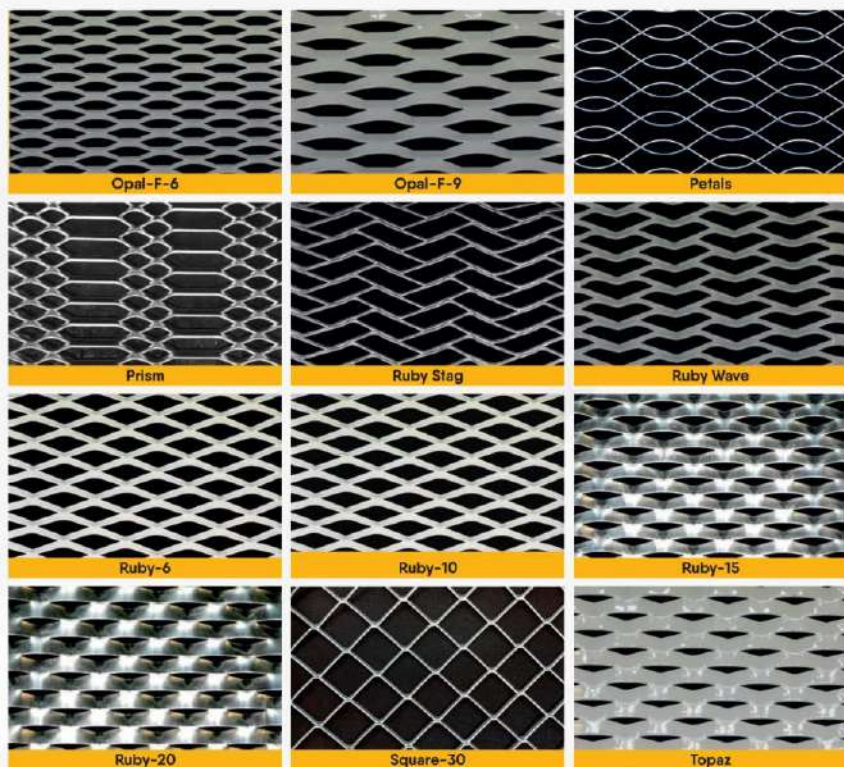


Dimensional Details of Facade Mesh/Sunscreen Mesh

Sr. No.	Style	SWM Inner Opening	LWM Inner Opening	Strand Width	Width in mm	Length in mm	%Open Area
25	Marine Louvers	4mm	25mm	9mm	915/1220/1520mm	1350mm/2700mm	10%
26	Marine 2.5	8mm	30mm	2.5mm	915/1220/1520mm	2400mm/4800mm	55%
27	Marine-3.5-IN4	4mm	35mm	3.5mm	915/1220/1520mm	1500mm/3000mm	15%
28	Marine 9	7mm	30mm	9mm	915/1220/1520mm	1500mm/3000mm	20%
29	Marine B	9mm	30mm	4.5mm	915/1220/1520mm	2000mm/4000mm	35%
30	Marine L	8mm	26mm	4.5mm	915/1220/1520mm	1800mm/3600mm	35%
31	Ocean-9	12mm	80mm	9mm	915/1220/1520mm	1550mm/3100mm	30%
32	Ocean-17	23mm	100mm	17mm	915/1220/1520mm	1650mm/3300mm	35%
33	Omega-3	9mm	15mm	3mm	915/1220/1520mm	2500mm/5000mm	50%
34	Omega-6	6mm	15mm	5mm	915/1220/1520mm	1500mm/3000mm	20%
35	Opal-7	20mm	43mm	7mm	915/1220/1520mm	2400mm/4800mm	50%
36	Opal-10	15mm	40mm	10mm	915/1220/1520mm	1800mm/3600mm	25%

*Material : Al/MS/Cu/Br | Thickness : 1.5/2/3mm

MADE FROM ALUMINIUM, MILD STEEL, COPPER, BRASS, STAINLESS STEEL, ETC. Expanded Metal Facade Mesh will have tolerances in Width of $\pm 10\text{mm}$ & Length of $\pm 40\text{mm}$. SWM may vary by $\pm 3\text{mm}$, LWM may vary by $\pm 4\text{mm}$, Strand may vary by $\pm 0.5\text{mm}$, Thickness may vary by $\pm 0.2\text{mm}$.



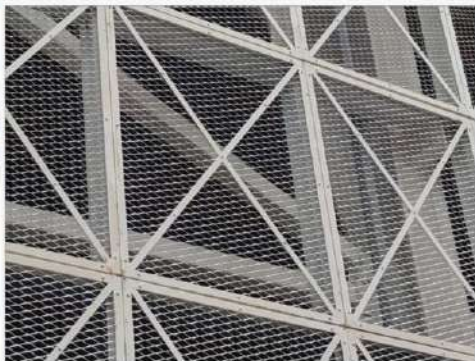
Dimensional Details of Facade Mesh/Sunscreen Mesh

Sr. No.	Style	SWM Inner Opening	LWM Inner Opening	Strand Width	Width in mm	Length in mm	%Open Area
37	Opal-F-6	12mm	45mm	6mm	915/1220/1520mm	1850mm/3700mm	35%
38	Opal-F-9	12mm	45mm	9mm	915/1220/1520mm	1600mm/3200mm	30%
39	Petals	29mm	95mm	4mm	915/1220/1520mm	4500mm/9000mm	75%
40	Prism	12mm	25mm/50mm	4mm	915/1220/1520mm	4500mm/9000mm	50%
41	Ruby Stag	13mm	55mm	3mm	915/1220/1520mm	3200mm/6400mm	65%
42	Ruby Wave	10mm	40mm	3mm	915/1220/1520mm	2400mm/4800mm	60%
43	Ruby-6	32mm	75mm	6mm	915/1220/1520mm	3300mm/6600mm	65%
44	Ruby-10	20mm	55mm	11mm	915/1220/1520mm	2000mm/4000mm	40%
45	Ruby-15	18mm	58mm	15mm	915/1220/1520mm	1500mm/3000mm	25%
46	Ruby-20	18mm	60mm	20mm	915/1220/1520mm	1400mm/2800mm	20%
47	Square-30	26mm	28mm	2mm	915/1220/1520mm	9000mm	90%
48	Topaz	8mm	25mm	10mm	915/1220/1520mm	1450mm/2900mm	10%

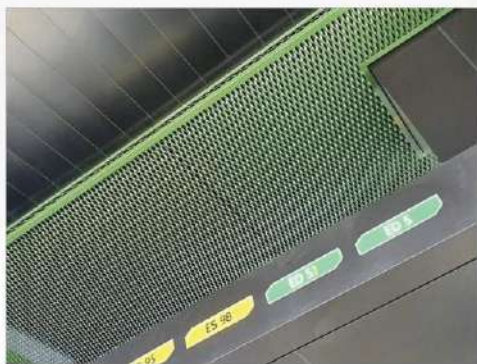
*Material : Al/MS/Cu/Br | Thickness : 1.5/2/3mm

MADE FROM ALUMINIUM, MILD STEEL, COPPER, BRASS, STAINLESS STEEL, ETC. Expanded Metal Facade Mesh will have tolerances in Width of $\pm 10\text{mm}$ & Length of $\pm 40\text{mm}$. SWM may vary by $\pm 3\text{mm}$. LWM may vary by $\pm 4\text{mm}$. Strand may vary by $\pm 0.5\text{mm}$. Thickness may vary by $\pm 0.2\text{mm}$.

FACADE MESH



CEILING MESH











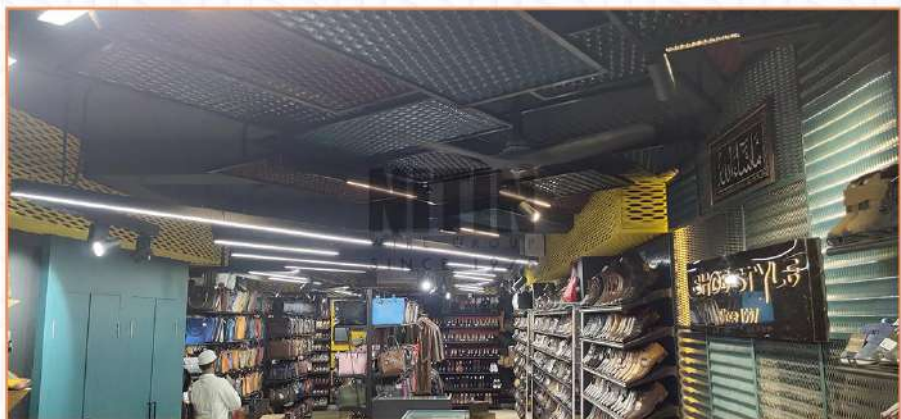








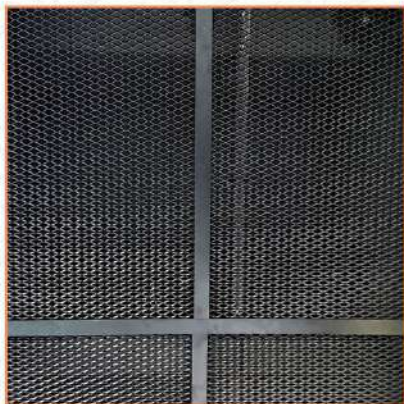


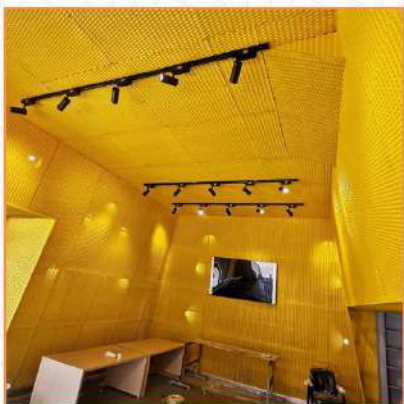
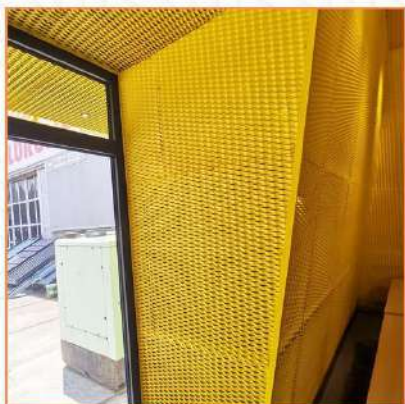






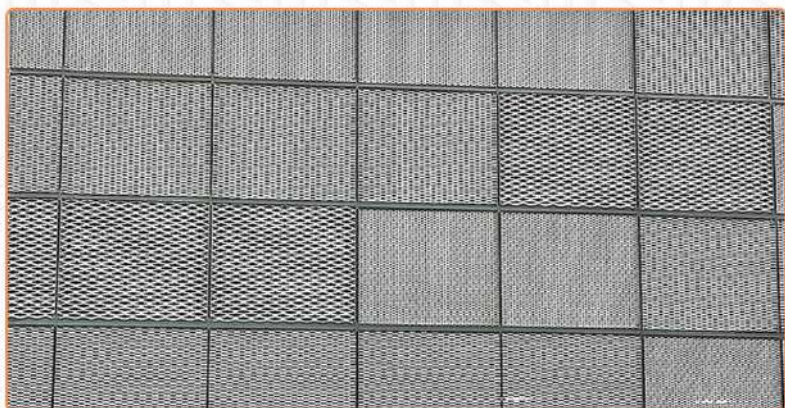




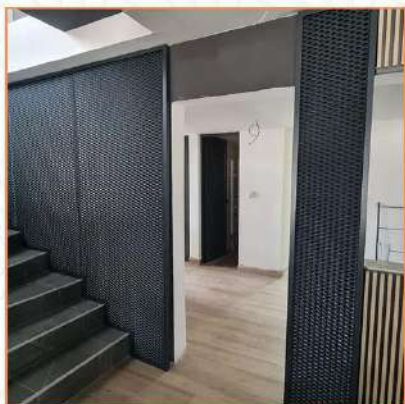
















www.nitinwiregroup.com

   / Nitin Wire Group



Scan this for Product Demo & Assistance,
Or Call us at **+91 63 69 59 44 40**



Office: No.89 & 92 E.V.K.
Sampath Road, Vepery,
Chennai- 600 007, TN



Manufacturing Unit:
Manamai, ECR, TN.
Hyderabad



Warehouse located:
Madhavaram, Chennai
Manamai, ECR, TN
Portblair



+91 44 25324615
+91 44 25321159
+91 44 26414960



+91 63 69 594 440
+91 98 40 252 251



smartfence@nitinwiregroup.com