



# The Fastest Diamond Planners on Earth

## MAGNUS DIGITAL



**Increase production upto 35%**

## Magnus Digital & it's Global Recognition



### Proudly Invented &

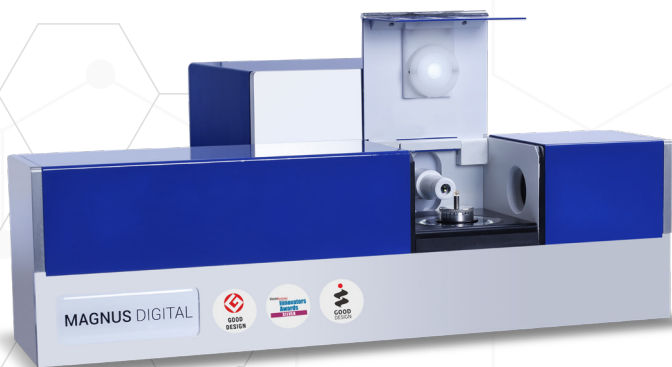
### Made In INDIA

# MAGNUS DIGITAL

**MAGNUS** DIGITAL **Neo**

Magnus Digital & Magnus Digital Neo is the most advanced rough diamond planning system having capabilities of utmost planning accuracy, optimum planning speed, extreme confidentiality and complete ease for transferring the planning data for further diamond processing.

Its AUTOMATION, INNOVATION and DESIGN excellence makes it the first choice of the most of the global diamond manufacturers. Magnus Digital & Magnus Digital Neo the smart planning solution developed and offered by STPL is especially hand-crafted to obtain maximum value of polish yield from a rough diamond.



Perfect 3D model of a rough stone for measuring groove and cavity



Most advanced algorithm with value added polish plans



Spotting any kind of inclusions like pique, gletz, deep gletz and polaris

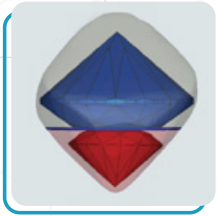


Thin and visible marking so that diamond cutting process can be obtained precisely with optimum polish gain



## Most Advanced Algorithms: Optimum Polish Value Plan

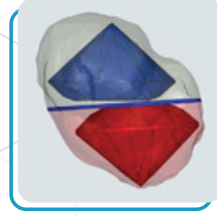
Highly advanced algorithms of Magnus Digital & Magnus Digital Neo makes the diamond planning process more and more personalize and lucrative by smartly analysing 4C parameters and inclusion positions to gain max yield. Masses of planning options for both round and fancy shapes to calculate and gain an optimal yield with finest accuracy.



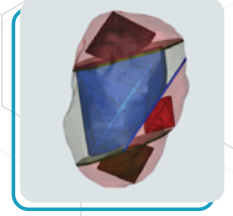
PLAN BY  
VALUE



PLAN BY  
WEIGHT



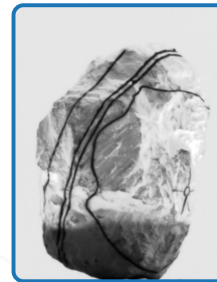
TWIN  
PLANNING



BEST SAW  
PLAN

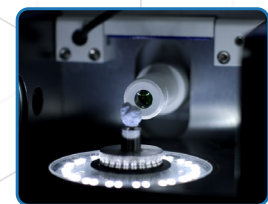
## Magnificent Scanning & Marking: Accurate Diamond Cutting

A superior laser source provides precise laser scanning that maps concave areas on the rough diamond, including grooves and holes so accurately and provides a detailed 3D model of the stone. An extremely stable and reliable European laser source ensures thin and visible marking so that diamond cutting process can be obtained precisely with optimum polish gain.



## Multi-Range Digital Lens for Any Size of Diamond

In Magnus Digital & Magnus Digital Neo optical lens is not required to be changed to plan different sized diamonds. With adjustable sizing modes Small, Medium and Large options different sized diamonds can be planned under the single optical lens.



## Superior Vision Quality, Effortless & Precise Inclusion Detection

**Diamond Planners Model Variants:**  
(In reference to rough stone size measuring capacity)

MAGNUS DIGITAL

MAGNUS DIGITAL Neo

5mm
8mm
12mm
18mm
26mm



Having Customer Base in More Than  
**30 Countries & 5 Continents**



India | Botswana | Brazil | Cambodia | China | Dubai | Ghana  
Hong Kong | Indonesia | Japan | Laos | Mauritius | Romania  
Russia | Singapore | South Africa | South Korea | Spain  
Sri Lanka | Switzerland | Taiwan | Thailand | Turkey  
United States | Vietnam | Zimbabwe



## Head Office:

**SAHAJANAND TECHNOLOGIES PRIVATE LIMITED.**

Sahajanand Estate, Vakhariawadi,  
Near Dabholi Char Rasta, Ved Road,  
Surat-395 004. Gujarat, India.

+91-261-611 0711 | +91-261-611 0722

contact@stpl.com  www.STPL.com

Like us | Follow us | Subscribe us:

 /stplglobal    /stplglobal

